






{ PRINCE OF WALES TERRACE LONDON W8
£16,900 PER MONTH AVAILABLE NOW

Hamptons
THE HOME EXPERTS

{ THE PARTICULARS

Prince Of Wales Terrace London
W8

£16,900 Per Month
Furnished

 2 Bedrooms
 2 Bathrooms
 1 Reception

Features

- Two Bedrooms, - Two Bathroom, - Guest WC, - Reception/Dining Room, - Kitchen, - Balcony/Terrace, - Furnished/unfurnished

Council Tax

Council Tax Band G

Hamptons
8 Hornton Street
Kensington, London, W8 4NW
020 7937 9372
KensingtonLettings@hamptons.co.uk
www.hamptons.co.uk

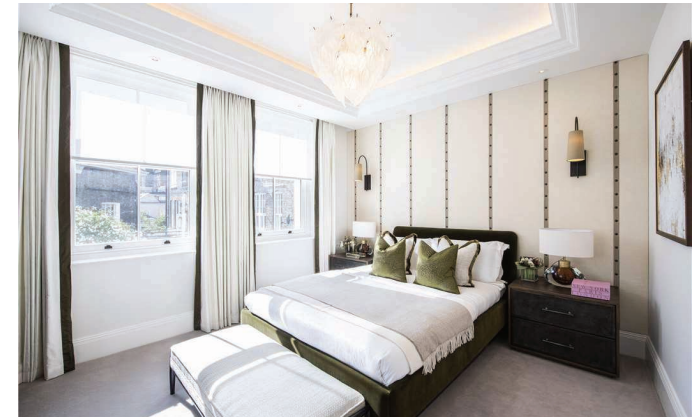
{ A BEAUTIFUL FIRST FLOOR HIGH CEILING TWO BEDROOM APARTMENT

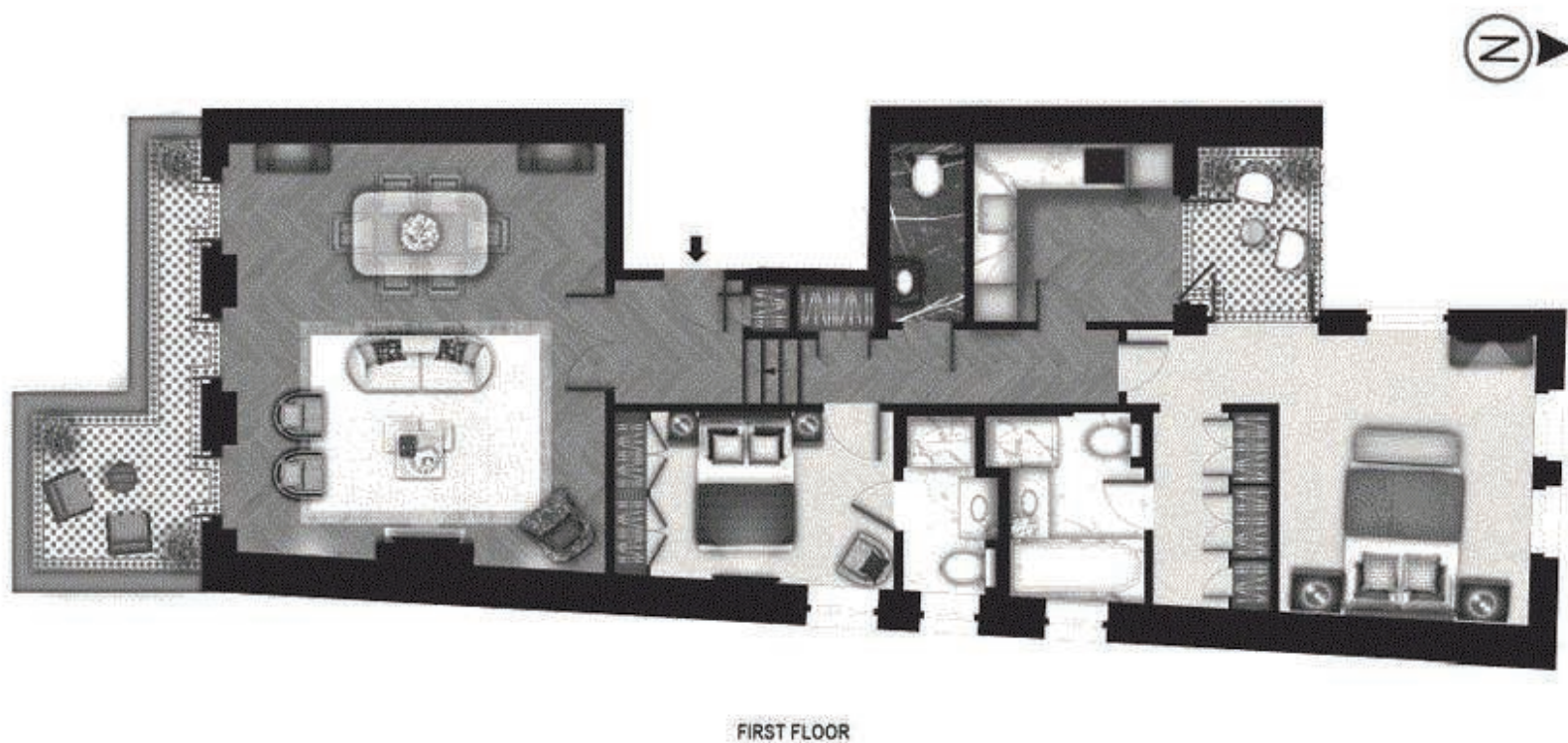
The Property

A beautiful first floor high ceiling two bedroom apartment spread over 1,266 sq ft. Set on the first floor (with lift) of this well maintained building in Kensington and close to Hyde Park. The reception room features an ornate working fireplace and a set of triple full-height doors leading to the large front-facing balcony. The dark oak floored kitchen comes complete with Tuscan Calacatta marble worktops, hand-built kitchen units, integrated Miele oven, induction hob, microwave, fridge-freezer, dishwasher, Quooker taps for hot and cold water and Wine fridge. The dual-aspect principal bedroom has a range of built-in wardrobes, an en-suite bathroom with underfloor heating, mirror-fronted cabinet units with integrated demister, and a door leading to the private courtyard terrace. The second bedroom also has an adjacent dressing room with dual aspect doors leading out to the rear terrace. Offered furnished/unfurnished.

Location

A stucco-fronted building in prime Kensington, with views over-looking Hyde Park and London. Transport links at Kensington High Street (Circle and District lines) and Knightsbridge is close by.





APPROX. GROSS INTERNAL AREA *
1115 Ft² - 103.58 M²

For Clarification

We wish to inform prospective tenants that we have prepared these particulars as a general guide and they have been confirmed as accurate by the landlord. We have not verified permissions, nor carried out a survey, tested the services, appliances and specific fittings. Room sizes are approximate and measurement figures rounded: they are taken between internal wall surfaces and therefore include cupboards/shelves, etc. Accordingly, they should not be relied upon for

carpets and furnishings. It should also be noted that all fixtures and fittings, carpeted, curtains/blinds, kitchen equipment and garden statuary, whether fitted or not, are deemed removable by the landlord unless specifically itemised with these particulars. Please enquire in office or on our website for details on holding deposit and tenancy deposit figures.

