



{ RADNOR TERRACE LONDON W14
£750 PER WEEK AVAILABLE 12/07/2024

Hamptons

THE HOME EXPERTS

{ THE PARTICULARS

Radnor Terrace London W14

**£750 Per Week
Furnished**

 **1 Bedroom**
 **1 Bathroom**
 **1 Reception**

Features

- Luxury second floor apartment, - Large double bedroom, - Balcony, - Underfloor heating, - Comfort cooling, - 24h concierge, - Gym, - Swimming pool and spa, - Business centre, - Parking Separate Negotiation

Council Tax

Council Tax Band F

Hamptons

8 Hornton Street
Kensington, London, W8 4NW
020 7937 9372
KensingtonLettings@hamptons.co.uk
www.hamptons.co.uk

{ A LUXURY ONE BEDROOM APARTMENT WITH 24HR CONCIERGE

The Property

A luxury one bedroom apartment situated on the second floor (with lift) in the prestigious 375 Kensington High Street development. The property comprises an open plan living room and kitchen, balcony, one double bedroom with fitted storage, bathroom and a storage cupboard. Other benefits include underfloor heating, comfort cooling, 24 hour concierge, gym, swimming pool and spa, and a business centre. No pets allowed. Parking Separate Negotiation. Offered furnished.

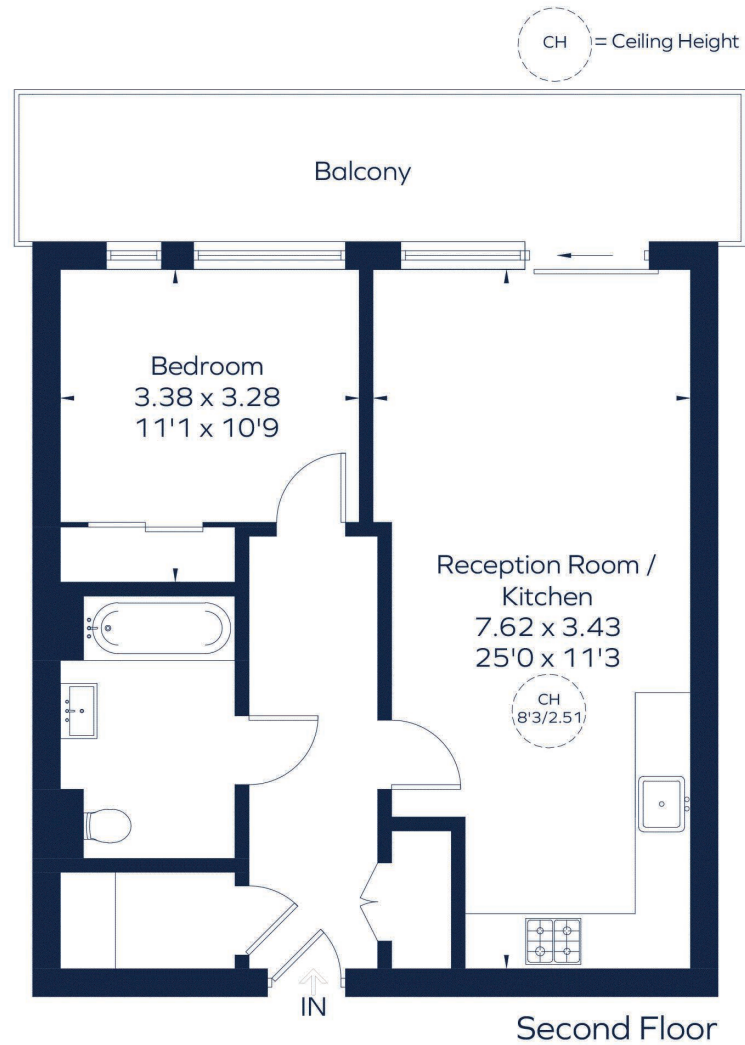
Location

Situated at the end of Kensington High Street, with access to Kensington Olympia overland and tube station and High Street Kensington (District and Circle lines).



BRIDGEMAN HOUSE

Approximate Gross Internal Area
Second floor = 563 sq. ft. (52.3 sq. m.)



This plan is for layout guidance only. Not drawn to scale unless stated. Windows and door openings are approximate. Whilst every care is taken in the preparation of this plan, please check all dimensions, shapes and compass bearings before making any decisions reliant upon them.
ID 965910

For Clarification

We wish to inform prospective tenants that we have prepared these particulars as a general guide and they have been confirmed as accurate by the landlord. We have not verified permissions, nor carried out a survey, tested the services, appliances and specific fittings. Room sizes are approximate and measurement figures rounded: they are taken between internal wall surfaces and therefore include cupboards/shelves, etc. Accordingly, they should not be relied upon for

carpets and furnishings. It should also be noted that all fixtures and fittings, carpeted, curtains/blinds, kitchen equipment and garden statuary, whether fitted or not, are deemed removable by the landlord unless specifically itemised with these particulars. Please enquire in office or on our website for details on holding deposit and tenancy deposit figures.

