



WRIGHTS LANE LONDON W8
£720 PER WEEK AVAILABLE 18/05/2024

Hamptons

THE HOME EXPERTS

{ THE PARTICULARS

Wrights Lane London W8

**£720 Per Week
Furnished**

 **1 Bedroom**
 **1 Bathroom**
 **1 Reception**

Features

- One Bedroom, - One Bathroom, - 3rd floor/Lift, - Gym, - 24hr Porter, - Furnished

Council Tax

Council Tax Band G

Hamptons

8 Hornton Street
Kensington, London, W8 4NW
020 7937 9372
KensingtonLettings@hamptons.co.uk
www.hamptons.co.uk

{ A SPACIOUS AND NEUTRALLY DECORATED ONE BEDROOM APARTMENT

The Property

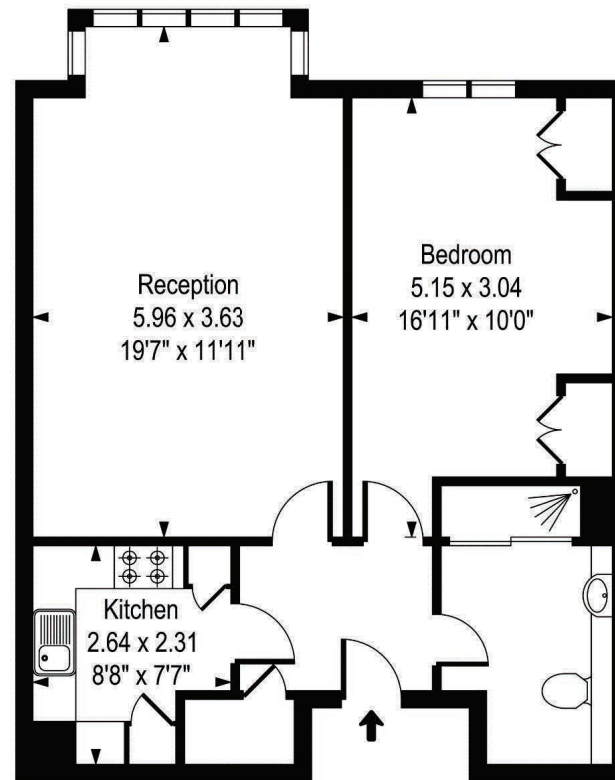
A neutrally decorated third floor one bedroom apartment offering quiet, spacious accommodation, well located moments from Kensington High Street. The property has recently been redecorated throughout and totals 593 sq ft. Briefly comprising a good size reception room, separate fully fitted kitchen, storage cupboard in the hallway, double bedroom with built-in storage and family bathroom. The property is naturally bright with wooden flooring throughout. The apartment offers 24 hour security, a gymnasium and parking (by separate negotiation). Offered furnished.

Location

Consort Court is located moments from the shops, restaurants and transport links of Kensington High Street (circle and district lines).



Consort Court, Wrights Lane, W8



Third Floor

Approx Gross Internal Area **568 Sq Ft - 52.74 Sq M**

Whilst every attempt has been made to ensure the accuracy of the floor plan contained here, measurements of the doors, windows, rooms and any other items are approximate and no responsibility is taken for any error, omission, or mis-statement. This plan is for illustrative purposes only and should be used as such by any prospective purchaser. The services, systems and appliances shown have not been tested and no guarantee as to their operability or efficiency can be given.

For Clarification

We wish to inform prospective tenants that we have prepared these particulars as a general guide and they have been confirmed as accurate by the landlord. We have not verified permissions, nor carried out a survey, tested the services, appliances and specific fittings. Room sizes are approximate and measurement figures rounded: they are taken between internal wall surfaces and therefore include cupboards/shelves, etc. Accordingly, they should not be relied upon for

carpets and furnishings. It should also be noted that all fixtures and fittings, carpeted, curtains/blinds, kitchen equipment and garden statuary, whether fitted or not, are deemed removable by the landlord unless specifically itemised with these particulars. Please enquire in office or on our website for details on holding deposit and tenancy deposit figures.

