



**RUSSELL ROAD LONDON W14**  
*£500 PER WEEK AVAILABLE 20/05/2024*

**Hamptons**

THE HOME EXPERTS

# { THE PARTICULARS

Russell Road London W14

**£500 Per Week  
Furnished**

 **1 Bedroom**  
 **1 Bathroom**  
 **1 Reception**

## Features

- One Bedroom, - One Bathroom, -  
Communal Garden, - Permit Parking, -  
Furnished, - Air-Con

## Council Tax

Council Tax Band C

## Hamptons

8 Hornton Street  
Kensington, London, W8 4NW  
020 7937 9372  
KensingtonLettings@hamptons.co.uk  
www.hamptons.co.uk

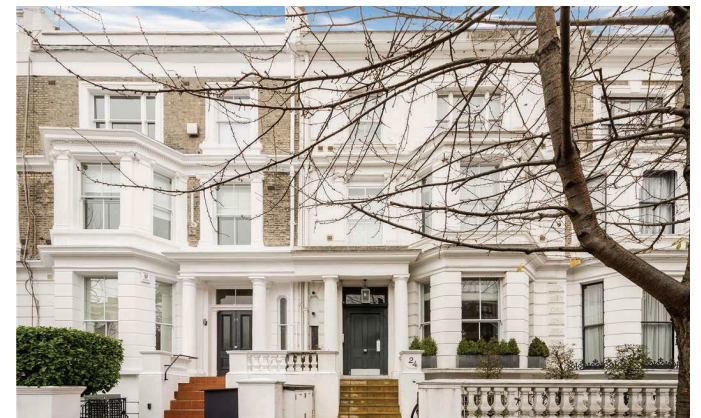
# { A BRIGHT ONE BEDROOM FLAT WITH COMMUNAL GARDEN

## The Property

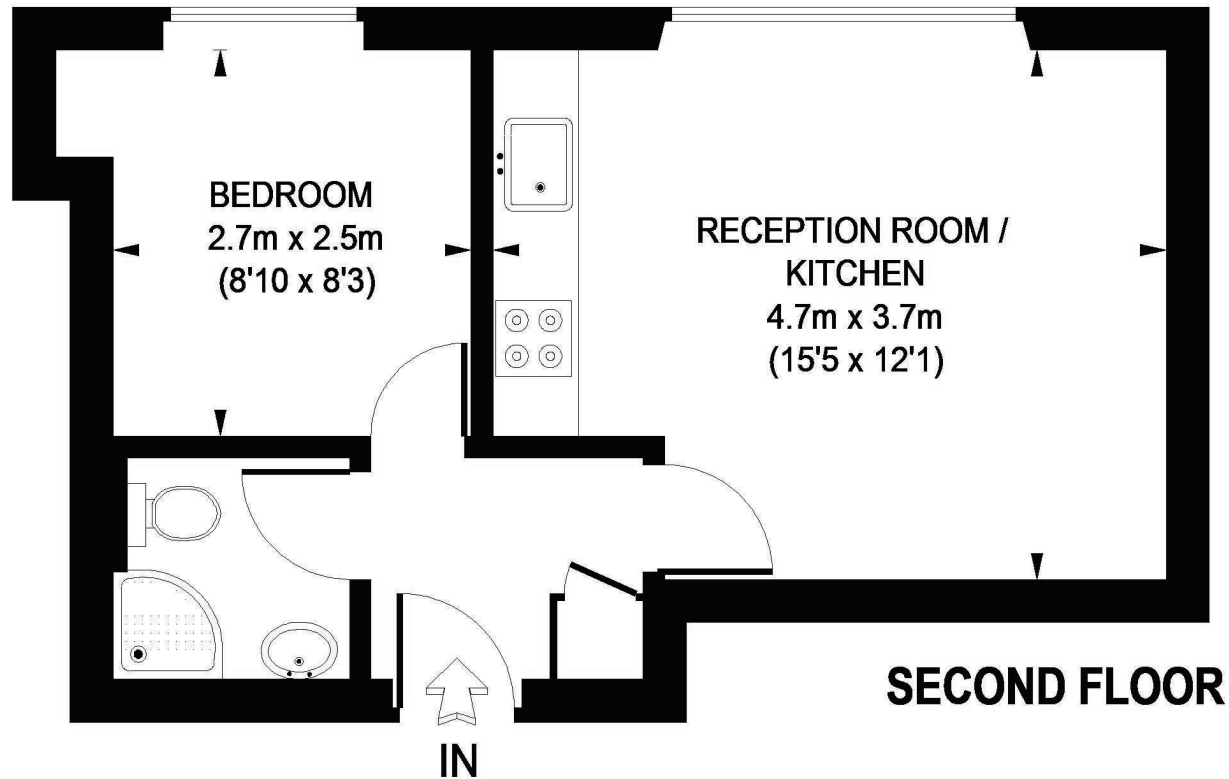
A bright one bedroom flat on the 2nd floor of a period conversion with access to and views over beautiful communal gardens, situated moments from Kensington Olympia. The flat comprises open plan kitchen and reception room, double bedroom and bathroom. Offered furnished.

## Location

Russell Road is situated moments from Kensington Olympia (District line tube and rail links) and the shops and restaurants of Kensington High Street.



# RUSSELL ROAD



**APPROXIMATE GROSS INTERNAL AREA = 323 SQ. FT. (30 SQ. M.)**

**This plan is for layout guidance only. Not drawn to scale unless stated. Windows & door openings are approximate. Whilst every care is taken in the preparation of this plan, please check all dimensions, shapes & compass bearings before making any decisions reliant upon them.**

**Please be advised that Hamptons International / our agents have not seen or reviewed any building regulations or planning permission in relation to works carried out to the property. (ID52190)**

#### **For Clarification**

We wish to inform prospective tenants that we have prepared these particulars as a general guide and they have been confirmed as accurate by the landlord. We have not verified permissions, nor carried out a survey, tested the services, appliances and specific fittings. Room sizes are approximate and measurement figures rounded: they are taken between internal wall surfaces and therefore include cupboards/shelves, etc. Accordingly, they should not be relied upon for

carpets and furnishings. It should also be noted that all fixtures and fittings, carpeted, curtains/blinds, kitchen equipment and garden statuary, whether fitted or not, are deemed removable by the landlord unless specifically itemised with these particulars. Please enquire in office or on our website for details on holding deposit and tenancy deposit figures.

