



LISGAR TERRACE LONDON W14
£2,500 PER MONTH AVAILABLE 25/05/2024

Hamptons

THE HOME EXPERTS

{ THE PARTICULARS

Lisgar Terrace London W14

£2,500 Per Month
Furnished

 **2 Bedrooms**
 **1 Bathroom**
 **1 Reception**

Features

- Two Bedrooms, - One Bathroom, - Top floor, - Furnished, - Good Location

Council Tax

Council Tax Band D

Hamptons

8 Hornton Street
Kensington, London, W8 4NW
020 7937 9372
KensingtonLettings@hamptons.co.uk
www.hamptons.co.uk

{ A FANTASTIC TWO DOUBLE BEDROOM TOP FLOOR FLAT

The Property

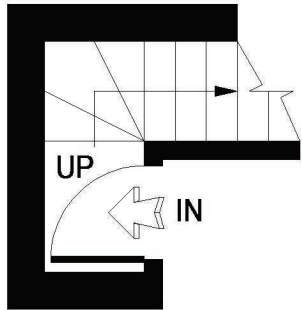
A fantastic two double bedroom top floor flat located close to the amenities of West Kensington and a short walk to High Street Kensington. This modern two bedroom apartment is flooded with natural light and comprises open plan kitchen reception room, two double bedrooms and bathroom. there are wooden floors throughout and the property has a light contemporary feel. Offered furnished.

Location

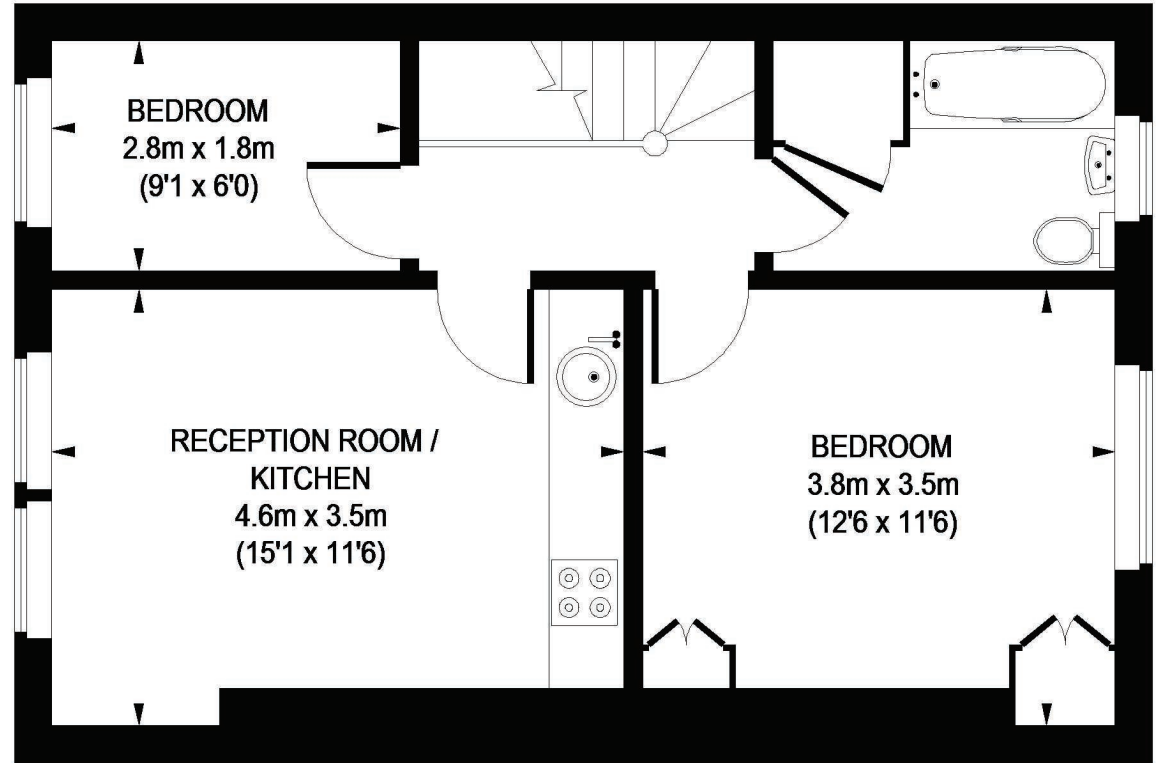
Lisgar Terrace is situated close to the amenities of Kensington Olympia and West Kensington tube station.



LISGAR TERRACE



FIRST FLOOR



SECOND FLOOR

APPROXIMATE GROSS INTERNAL AREA =
FIRST FLOOR = 21 SQ. FT. (2 SQ. M.)
SECOND FLOOR = 506 SQ. FT. (47 SQ. M.)
TOTAL = 527 SQ. FT. (49 SQ. M.)

This plan is for layout guidance only. Not drawn to scale unless stated. Windows & door openings are approximate. Whilst every care is taken in the preparation of this plan, please check all dimensions, shapes & compass bearings before making any decisions reliant upon them.

Please be advised that Hamptons International / our agents have not seen or reviewed any building regulations or planning permission in relation to works carried out to the property. (ID25175)

For Clarification

We wish to inform prospective tenants that we have prepared these particulars as a general guide and they have been confirmed as accurate by the landlord. We have not verified permissions, nor carried out a survey, tested the services, appliances and specific fittings. Room sizes are approximate and measurement figures rounded: they are taken between internal wall surfaces and therefore include cupboards/shelves, etc. Accordingly, they should not be relied upon for

carpets and furnishings. It should also be noted that all fixtures and fittings, carpeted, curtains/blinds, kitchen equipment and garden statuary, whether fitted or not, are deemed removable by the landlord unless specifically itemised with these particulars. Please enquire in office or on our website for details on holding deposit and tenancy deposit figures.



Awaiting Photograph



Awaiting Photograph