



Central Avenue London SW6, EPC C

£1,250 Per Week - Available 24/08/2016

HAMPTONS
INTERNATIONAL

Beyond your expectations

SHORT LET. A beautifully furnished split level three bedroom three bathroom apartment with private terrace and stunning river views. Fulham Riverside offers modern and secure living, moments from the Thames with 24 hour concierge service.

three bedrooms | three bathrooms | private terrace | river views | 24 hour concierge | split level.

Description

SHORT LET. A beautifully furnished split level three bedroom three bathroom apartment with private terrace and stunning river views. Fulham Riverside offers modern and secure living, moments from the Thames with 24 hour concierge service.

Furnishing

Furnished



87-westbourne-apartments-001



87-westbourne-apartments-003

Hamptons Fulham Lettings

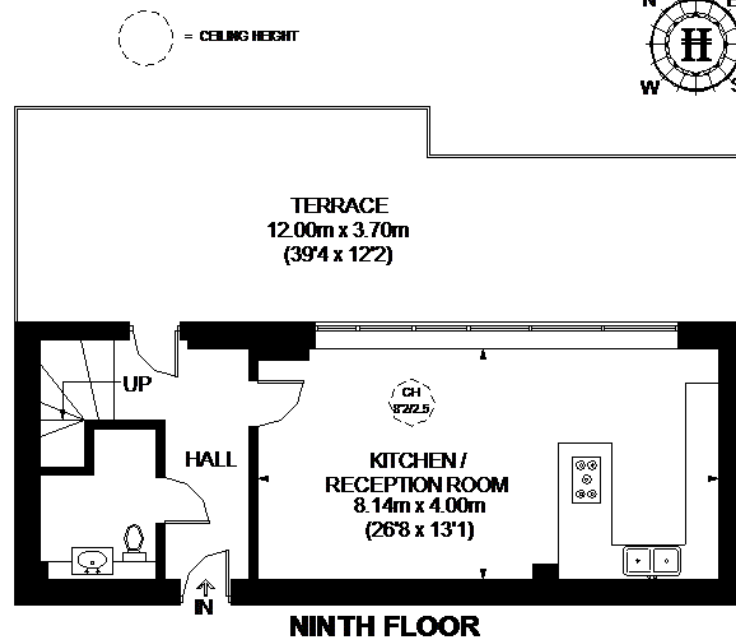
193 New Kings Road, Fulham

London SW6 4SS

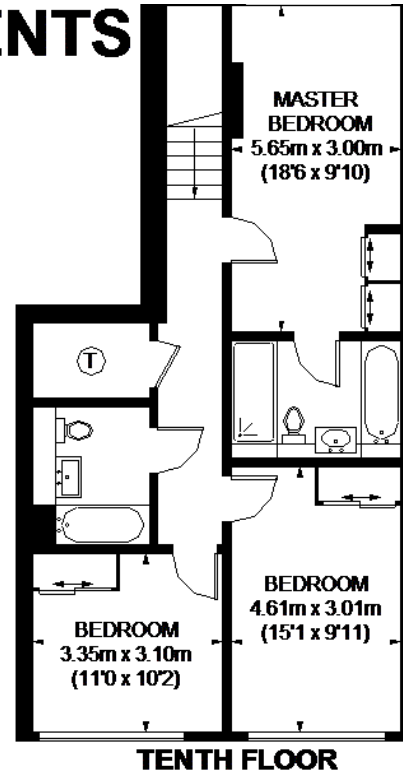
Tel: 020 7371 0299 - fulhamlettings@hamptons-int.com

www.hamptons.co.uk

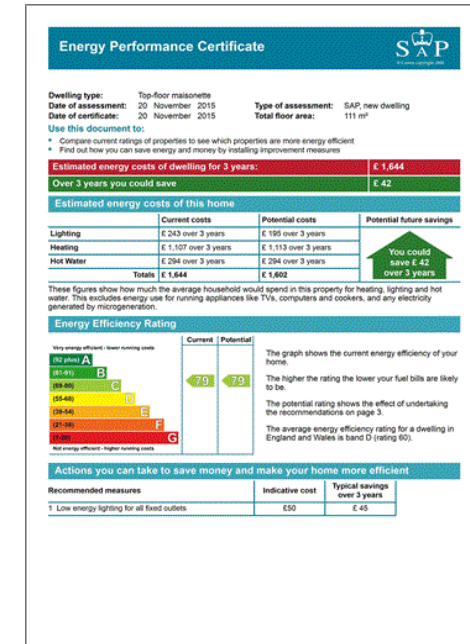
WESTBOURNE APARTMENTS



APPROXIMATE GROSS INTERNAL AREA
NINTH FLOOR = 525 SQ. FT. (48.8 SQ. M.)
TENTH FLOOR = 743 SQ. FT. (69 SQ. M.)
TOTAL = 1268 SQ. FT. (117.8 SQ. M.)



This plan is for layout guidance only. Not drawn to scale unless stated. Windows and door openings are approximate. Whilst every care is taken in the preparation of this plan, please check all dimensions, shapes and compass bearings before making any decisions reliant upon them. Please be advised that Hamptons International / our agents have not seen or reviewed any building regulations or planning permission in relation to works carried out to the property (ID260795)



For clarification, we wish to inform prospective purchasers that we have prepared these sales particulars as a general guide. We have not verified permissions, nor carried out a survey, tested the services, appliances and specific fittings. Room sizes are approximate and rounded: they are taken between internal wall surfaces and therefore include cupboards/shelves, etc. Accordingly, they should not be relied upon for carpets and furnishings. It should also be noted that all fixtures and fittings, carpeted, curtains/blinds, kitchen equipment and garden statuary, whether fitted or not, are deemed removable by the vendor unless specifically itemised with these particulars.