



{ ENGLEFIELD ROAD LONDON N1  
£650 PER WEEK AVAILABLE 24/02/2026

Hamptons  
THE HOME EXPERTS

# { THE PARTICULARS

Englefield Road London N1

£650 Per Week  
Furnished

-  1 Bedroom
-  1 Bathroom
-  1 Reception

## Features

- One Double Bedroom, - Large Reception,
- Integrated Kitchen, - Bathroom with Separate Shower, - Alarm System Present
- Tenant Will Need To Cover Costs For Activation And Use, - Wooden Floors, - Exposed Brickwork, - Offered Furnished Apart From A Mattress, - Council Tax - Band D

## Council Tax

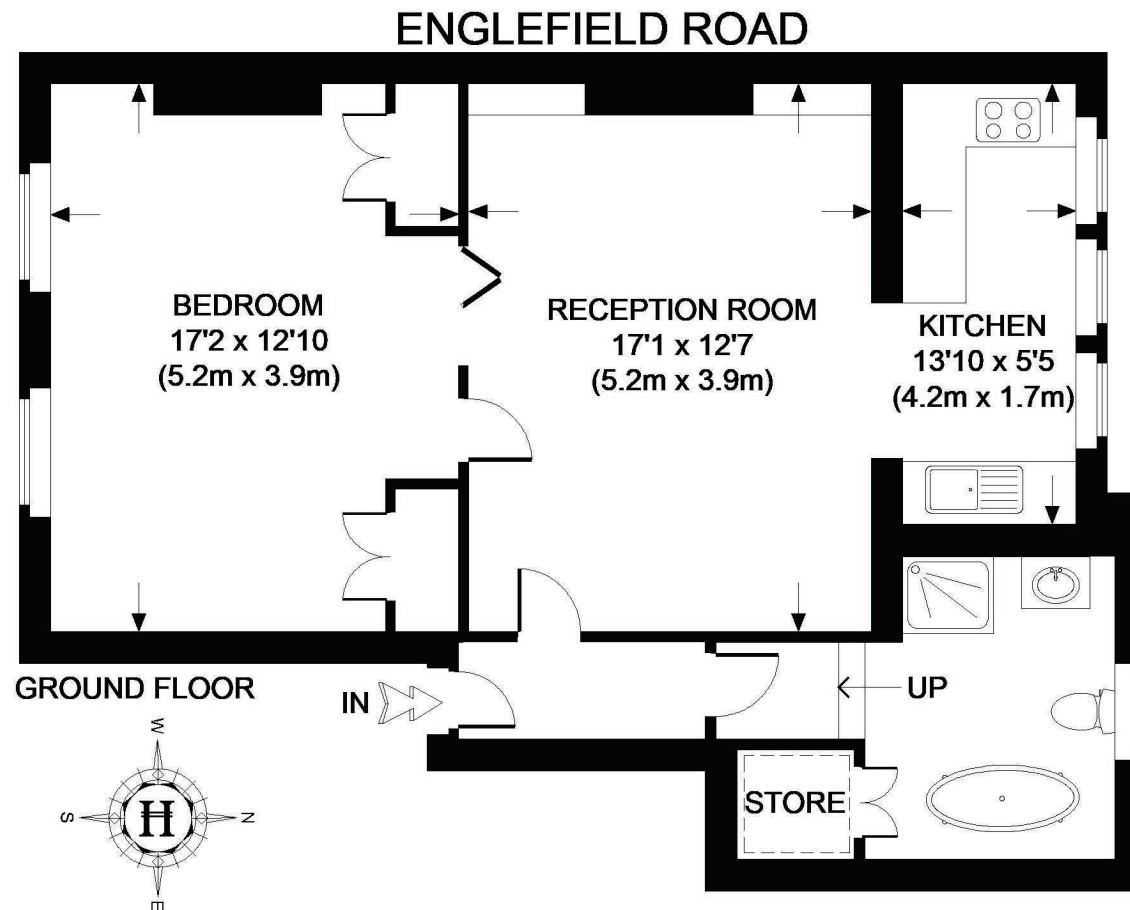
Council Tax Band D

Hamptons  
97-99 Upper Street  
Islington, London, N1 0NP  
0207 359 5675  
[islingtonlettings@hamptons-int.com](mailto:islingtonlettings@hamptons-int.com)  
[www.hamptons.co.uk](http://www.hamptons.co.uk)

## The Property

Hamptons are pleased to offer this character filled and naturally bright large one bedroom period conversion in the heart of De Beauvoir. This charming period conversion boasts a spacious reception, modern fitted kitchen with double sash windows, family bathroom fitted with a separate shower cubicle. Original features throughout include solid wooden floors, tall ceilings, ornate fixtures, feature fireplace and exposed brickwork. Located on this beautiful tree lined residential road just off of Essex Road, you are within a short walk of vibrant Upper Street and Essex Road over ground station whilst having numerous bus and cycle routes close by.





 = RH = RESTRICTED HEAD ROOM BELOW 5 FT. / 1.5 M.

**APPROXIMATE GROSS INTERNAL AREA =**

**TOTAL = 663 SQ. FT. (61.6 SQ. M.)**

**This plan is for layout guidance only. Not drawn to scale unless stated. Windows & door openings are approximate. Whilst every care is taken in the preparation of this plan, please check all dimensions, shapes & compass bearings before making any decisions reliant upon them. Please be advised that Hamptons International / our agents have not seen or reviewed any building regulations or planning permission in relation to works carried out to the property.**

**For Clarification**

We wish to inform prospective tenants that we have prepared these particulars as a general guide and they have been confirmed as accurate by the landlord. We have not verified permissions, nor carried out a survey, tested the services, appliances and specific fittings. Room sizes are approximate and measurement figures rounded: they are taken between internal wall surfaces and therefore include cupboards/shelves, etc. Accordingly, they should not be relied upon for

carpets and furnishings. It should also be noted that all fixtures and fittings, carpeted, curtains/blinds, kitchen equipment and garden statuary, whether fitted or not, are deemed removable by the landlord unless specifically itemised with these particulars. Please enquire in office or on our website for details on holding deposit and tenancy deposit figures.

