



MILDMAY ROAD LONDON N1
£795 PER WEEK AVAILABLE 08/11/2025

Hamptons
THE HOME EXPERTS

{ THE PARTICULARS

Mildmay Road London N1

£795 Per Week
Unfurnished

 2 Bedrooms
 1 Reception

Features

- Split Level Period Conversion, - Two Double Bedrooms, - One Bathroom With Walk In Shower, - Large Reception Room, - Modern Integrated Kitchen, - Contemporary Decor Throughout, - Offered Unfurnished, - Council Tax - Band E

Council Tax

Council Tax Band E

Hamptons
97-99 Upper Street
Islington, London, N1 0NP
0207 359 5675
islingtonlettings@hamptons-int.com
www.hamptons.co.uk

The Property

A bright and well presented two bedroom duplex apartment located on this quiet tree lined street in the heart of De Beauvoir. Occupying the first and second floor of this charming period property, the apartment offers two large double bedrooms, large reception, modern kitchen and a shower suite. Offered with contemporary decor throughout and modern fixtures and fittings, the flat further benefits include wooden floors (partial) and double glazed UPVC sash windows. Mildmay Road is located within a short walk of Canonbury Overground station, easy access into Old Street and Shoreditch as well as offering multiple bus and cycle routes, and benefits from the amenities, bars and restaurants of Newington Green.



MILDMAY ROAD

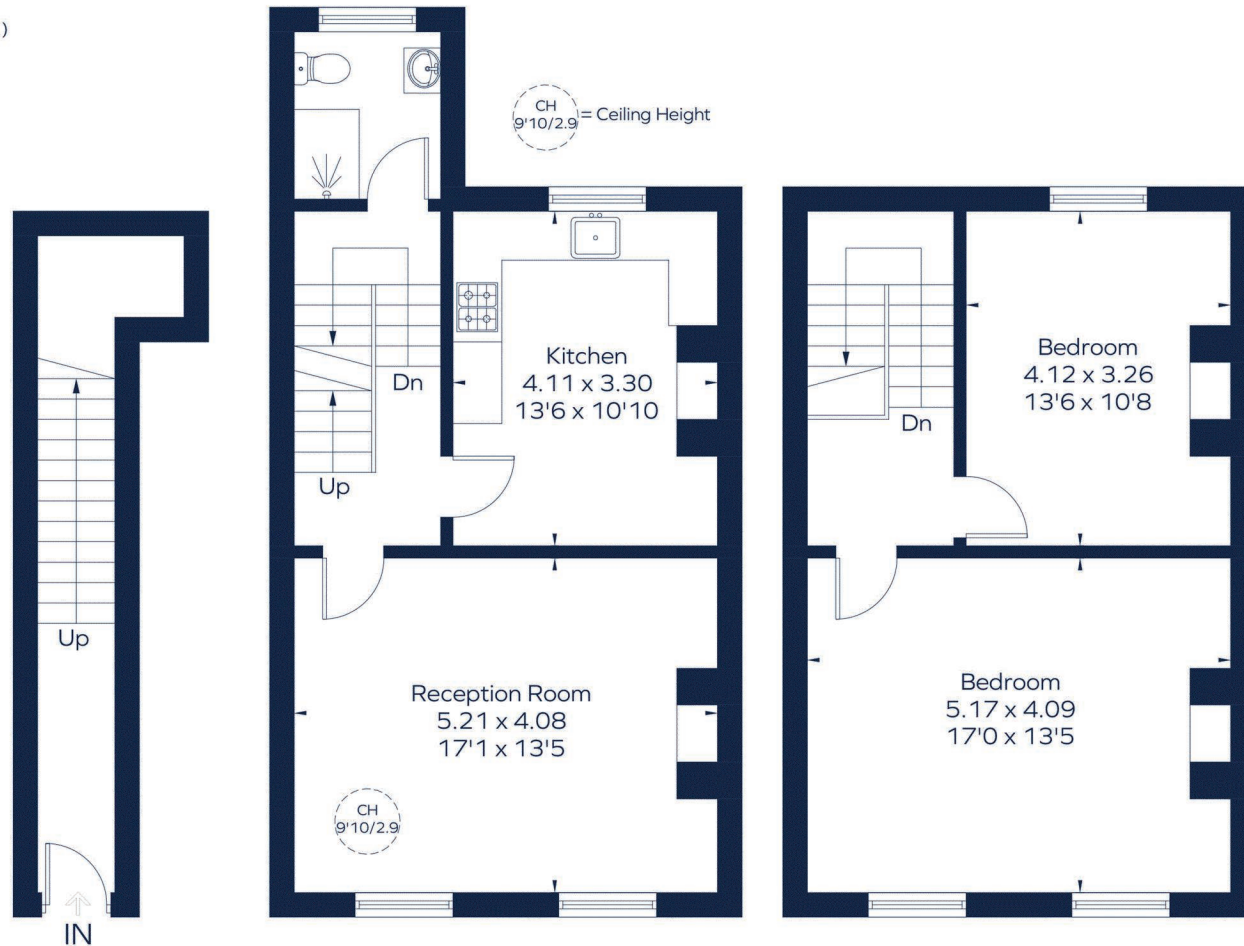
Approximate Gross Internal Area

Ground floor = 92 sq. ft. (8.6 sq. m.)

First floor = 510 sq. ft. (47.4 sq. m.)

Second floor = 467 sq. ft. (43.4 sq. m.)

Total = 1069 sq. ft. (99.4 sq. m.)



Raised Ground Floor First Floor

Second Floor

This plan is for layout guidance only. Not drawn to scale unless stated. Windows and door openings are approximate. Whilst every care is taken in the preparation of this plan, please check all dimensions, shapes and compass bearings before making any decisions reliant upon them.
ID 1246780

For Clarification

We wish to inform prospective tenants that we have prepared these particulars as a general guide and they have been confirmed as accurate by the landlord. We have not verified permissions, nor carried out a survey, tested the services, appliances and specific fittings. Room sizes are approximate and measurement figures rounded: they are taken between internal wall surfaces and therefore include cupboards/shelves, etc. Accordingly, they should not be relied upon for

carpets and furnishings. It should also be noted that all fixtures and fittings, carpeted, curtains/blinds, kitchen equipment and garden statuary, whether fitted or not, are deemed removable by the landlord unless specifically itemised with these particulars. Please enquire in office or on our website for details on holding deposit and tenancy deposit figures.

