



{ ALMEIDA STREET LONDON N1
£2,840 PER MONTH AVAILABLE 27/10/2025

Hamptons
THE HOME EXPERTS

{ THE PARTICULARS

Almeida Street London N1

£2,840 Per Month
Furnished

-  1 Bedroom
-  1 Bathroom
-  1 Reception

Features

- One Double Bedroom, - Reception Room,
- Modern Kitchen, - Three Piece Bathroom,
- Private Patio, - Contemporary Décor, -
- Offered Furnished, - Natural Light, -
- Sought After Street, - Council Tax - Band D

Council Tax

Council Tax Band D

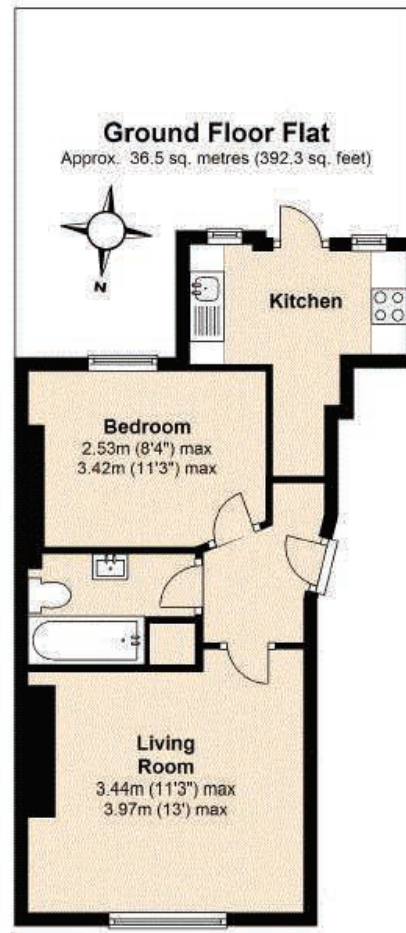
Hamptons
97-99 Upper Street
Islington, London, N1 0NP
0207 359 5675
islingtonlettings@hamptons-int.com
www.hamptons.co.uk

{ RECENTLY RENOVATED ONE BEDROOM CONVERSION.

The Property

Hamptons are delighted to present a raised ground floor one double bedroom period conversion in the heart of Islington. Offering a separate reception, bathroom and fitted kitchen with access to a large private patio. Benefiting from wooden floors throughout, contemporary decor, natural light and tall ceilings. Almeida Street is located in close proximity to both Angel and Highbury & Islington Underground Station along with the vibrant bars and restaurants of Upper Street.





Total area: approx. 36.5 sq. metres (392.3 sq. feet)

Whilst every attempt has been made to ensure the accuracy of the floor plans contained here, measurements of doors, windows and rooms are approximate and not to scale and no responsibility is taken for any error, omission or mis-statement. These plans are for representation purposes only and should be used as such by any prospective vendor, purchaser or tenant.

Plan produced using The Mobile Agent.

For Clarification

We wish to inform prospective tenants that we have prepared these particulars as a general guide and they have been confirmed as accurate by the landlord. We have not verified permissions, nor carried out a survey, tested the services, appliances and specific fittings. Room sizes are approximate and measurement figures rounded: they are taken between internal wall surfaces and therefore include cupboards/shelves, etc. Accordingly, they should not be relied upon for

carpets and furnishings. It should also be noted that all fixtures and fittings, carpeted, curtains/blinds, kitchen equipment and garden statuary, whether fitted or not, are deemed removable by the landlord unless specifically itemised with these particulars. Please enquire in office or on our website for details on holding deposit and tenancy deposit figures.

