






{ WOODBERRY DOWN LONDON N4
£750 PER WEEK AVAILABLE 23/07/2025

Hamptons
THE HOME EXPERTS

{ THE PARTICULARS

Woodberry Down London N4

£750 Per Week
Furnished

 2 Bedrooms
 2 Bathrooms
 1 Reception

Features

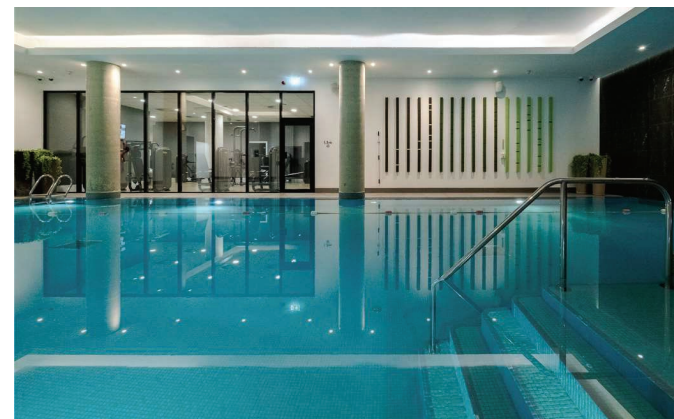
- Prime Waterside Location, - Two Double Bedrooms, - Two Bathrooms (One En-Suite), - Open Plan Reception, - Modern Kitchen With High Specification Appliances, - Private Balcony, - Furnished To An Exceptional Level Throughout, - Secure Development With Fob Entry And Concierge, - Full Access To On Site Facilities Including Swimming Pool, Spa With Sauna And Steam, Fitness Suite And Communal Lounge/Work Space, - Council Tax - Band D

Council Tax

Council Tax Band D
Hamptons
97-99 Upper Street
Islington, London, N1 0NP
0207 359 5675
islingtonlettings@hamptons-int.com
www.hamptons.co.uk

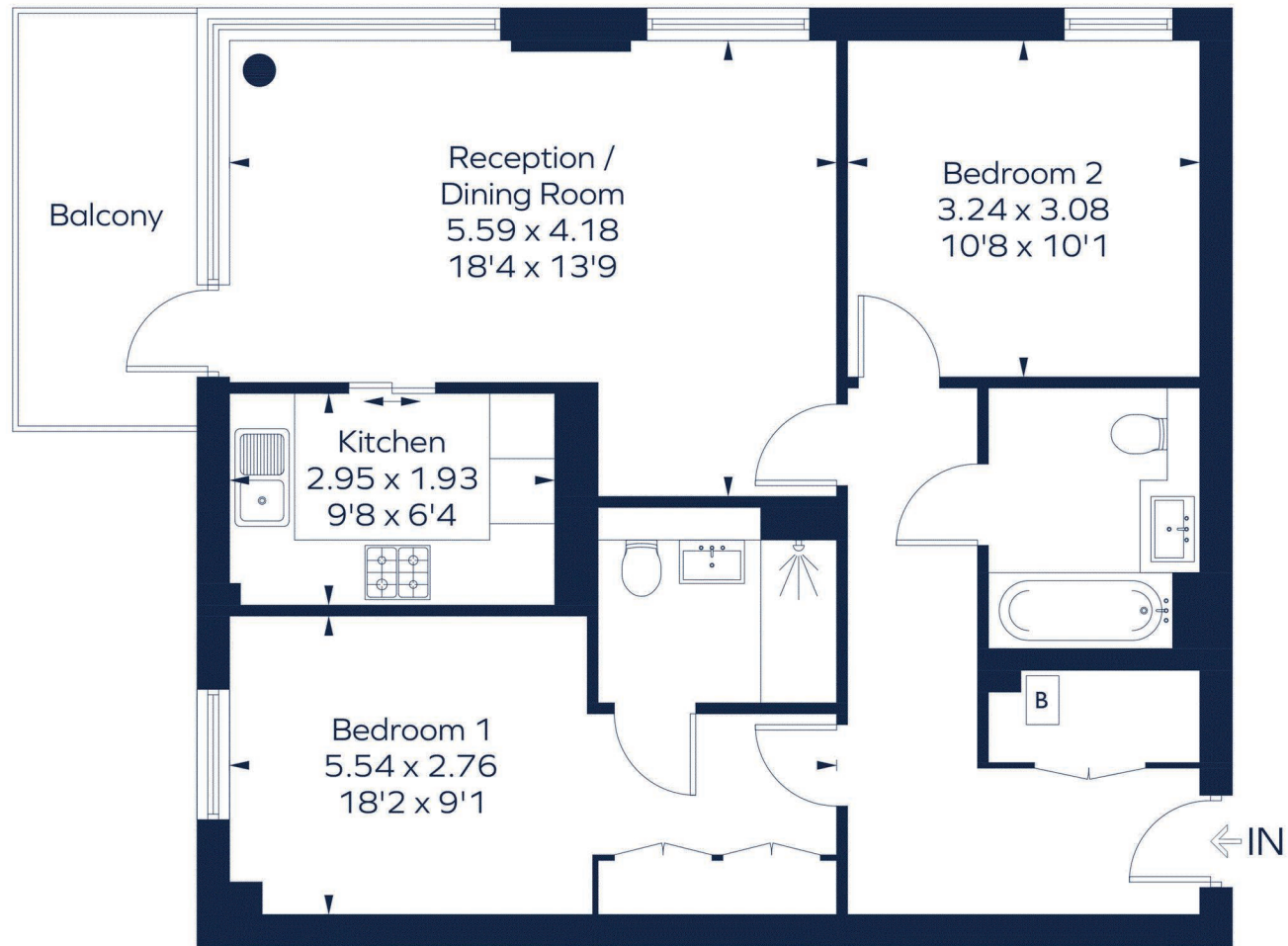
The Property

Hamptons are delighted to present an exceptional two bedroom apartment with private outside space in a prime waterside development with concierge and access to premium on site spa and gym facilities. The property consists of two double bedrooms, two bathrooms (one en-suite), an open plan reception room, a private balcony and a stylish kitchen with high specification, modern, integrated appliances. The apartment further benefits from good storage and is furnished to a premium level throughout, as well as having full access to all on site facilities including a heated swimming pool, jacuzzi, sauna, steam room, gym and fitness suite (which includes daily instructor-led group exercise classes) and a communal lounge and work space limited to a small number of properties within the development. The property is within a secure development with fob entry and concierge, and also benefits from a gated communal garden. Rivulet Apartments is located at Woodberry Down, a luxury landmark development by Berkeley Homes set among natural wetlands and two reservoirs making it a haven within Central London. Situated in close proximity to Manor House and Finsbury Park Underground Station, the development benefits from amenities, cafes and restaurants.



RIVULET APARTMENTS

Approximate Gross Internal Area = 777 sq. ft. (72.2 sq. m.)



Second Floor

Drawn for illustration and identification purposes only.
ID 1200574

For Clarification

We wish to inform prospective tenants that we have prepared these particulars as a general guide and they have been confirmed as accurate by the landlord. We have not verified permissions, nor carried out a survey, tested the services, appliances and specific fittings. Room sizes are approximate and measurement figures rounded: they are taken between internal wall surfaces and therefore include cupboards/shelves, etc. Accordingly, they should not be relied upon for

carpets and furnishings. It should also be noted that all fixtures and fittings, carpeted, curtains/blinds, kitchen equipment and garden statuary, whether fitted or not, are deemed removable by the landlord unless specifically itemised with these particulars. Please enquire in office or on our website for details on holding deposit and tenancy deposit figures.

