



PENTON STREET LONDON N1
£495 PER WEEK AVAILABLE 05/07/2025

Hamptons
THE HOME EXPERTS

{ THE PARTICULARS

Penton Street London N1

£495 Per Week
Furnished

-  1 Bedroom
-  1 Bathroom
-  1 Reception

Features

- One Bedroom, - Open Plan Reception, -
Modern Fitted Kitchen, - Bathroom, -
Naturally Light, - Close To Amenities, -
Wooden Floors, - Minutes from Angel
Tube, - Offered Furnished, - Council Tax -
Band C

Council Tax

Council Tax Band C

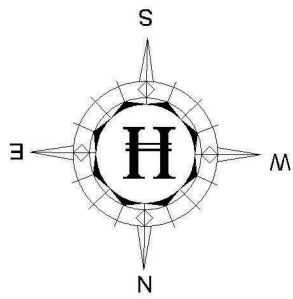
Hamptons
97-99 Upper Street
Islington, London, N1 0NP
0207 359 5675
islingtonlettings@hamptons-int.com
www.hamptons.co.uk

{ ONE BEDROOM APARTMENT CLOSE TO ANGEL TUBE.

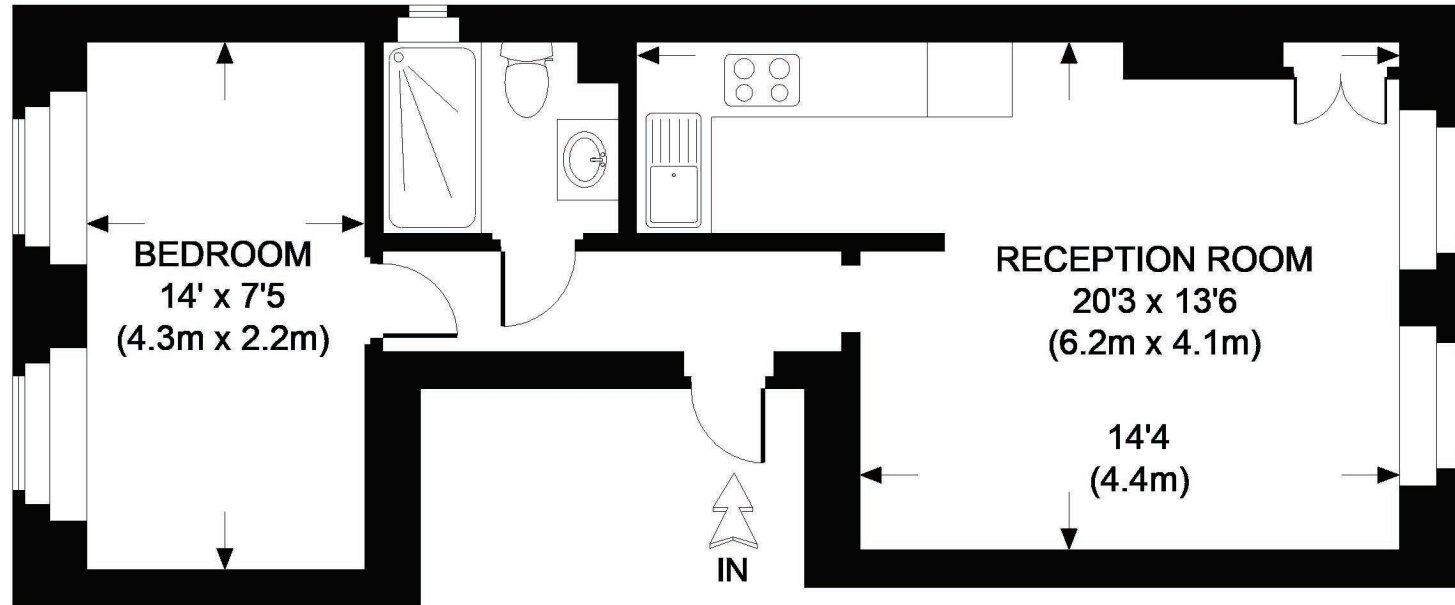
The Property

Naturally bright one bedroom period conversion with modern fixtures and fittings, offering open plan living with integrated kitchen, bathroom and wooden floors. You are a short walk away from Angel tube, the cafes and restaurants of Upper Street, as well as being within easy access of Kings Cross.





PENTON STREET



SECOND FLOOR

APPROXIMATE GROSS INTERNAL AREA = 398 SQ.FT. (37 SQ. M.)

This plan is for layout guidance only. Not drawn to scale unless stated. Windows & door openings are approximate. Whilst every care is taken in the preparation of this plan, please check all dimensions, shapes & compass bearings before making any decisions reliant upon it.

Please be advised that Hamptons International / our agents have not seen or reviewed any building regulations or planning permission in relation to works carried out to the property.

Energy Efficiency Rating

For Clarification

We wish to inform prospective tenants that we have prepared these particulars as a general guide and they have been confirmed as accurate by the landlord. We have not verified permissions, nor carried out a survey, tested the services, appliances and specific fittings. Room sizes are approximate and measurement figures rounded: they are taken between internal wall surfaces and therefore include cupboards/shelves, etc. Accordingly, they should not be relied upon for

carpets and furnishings. It should also be noted that all fixtures and fittings, carpeted, curtains/blinds, kitchen equipment and garden statuary, whether fitted or not, are deemed removable by the landlord unless specifically itemised with these particulars. Please enquire in office or on our website for details on holding deposit and tenancy deposit figures.

EPC Pending



Awaiting Photograph

Awaiting Photograph

Awaiting Photograph

Awaiting Photograph