



DAMSEL GROVE LONDON N4
£2,350 PER MONTH AVAILABLE 30/05/2025

Hamptons
THE HOME EXPERTS

{ THE PARTICULARS

Damsel Grove London N4

£2,350 Per Month
Furnished

-  1 Bedroom
-  1 Bathroom
-  1 Reception

Features

- One Double Bedroom, - One Bathroom, - Spacious Open Plan Reception, - Modern Kitchen With Brand New Appliances, - Private Balcony, - Floor To Ceiling Windows, - Offered Furnished/Unfurnished, - Secure Development, - Suitable For Students, - Council Tax - Band C

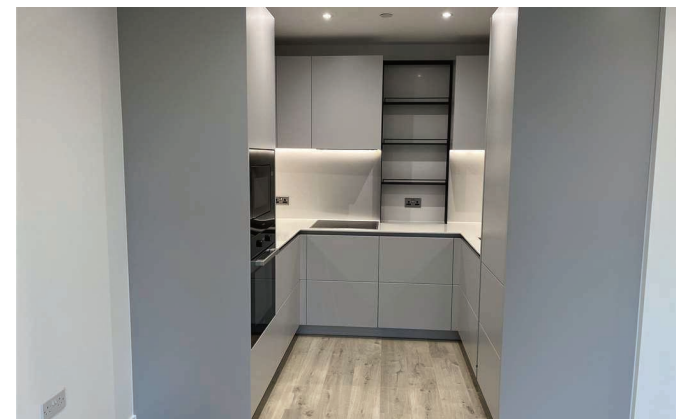
Council Tax

Council Tax Band C

Hamptons
97-99 Upper Street
Islington, London, N1 0NP
0207 359 5675
islingtonlettings@hamptons-int.com
www.hamptons.co.uk

The Property

A modern one bedroom apartment in a brand new, secure development offered both furnished or unfurnished. The property consists of one double bedroom, one bathroom, a spacious open plan reception room with wooden flooring, a modern kitchen with brand new appliances and private balcony. The apartment further benefits from good natural light due to floor to ceiling windows and ample storage space. Scarlet Court is located in close proximity to Manor House Underground station along with being near by to Woodberry Downs and the surrounding amenities, bars and restaurants.

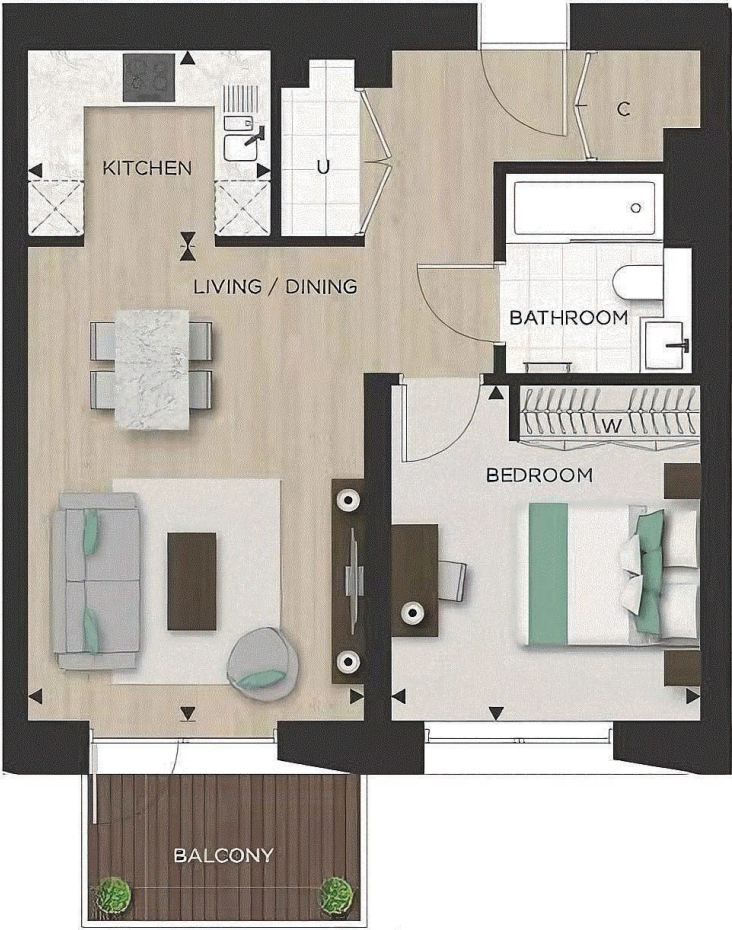


Apartment A.06.05

1 Bedroom
Sixth Floor
Sold



Dimensions	M/FT
Kitchen	2.60m x 2.10m
Living / Dining	5.10m x 3.60m
Bedroom	3.61m x 3.32m
Apartment Area	50.8 m ²
Balcony	5.3 m ²



Views over landscaped gardens

- Plan
- Interiors
- Material Options
- Views
- Specification

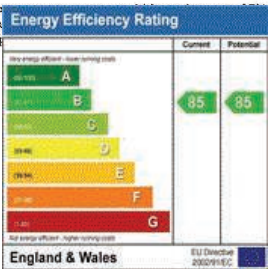
A.06.05



For Clarification
We wish to inform prospective tenants that we have prepared these particulars as a general guide and they have been confirmed as accurate by the landlord. We have not verified permissions, nor carried out a survey, tested the services, appliances and specific fittings. Room sizes are approximate and measurement figures rounded: they are taken between internal wall surfaces and therefore include cupboards/shelves, etc. Accordingly, they should not be relied upon for

carpets and furnishings. It should also be noted that all fixtures and fittings, carpeted, curtains/blinds, kitchen equipment and garden statuary, whether fitted or not, are deemed removable by the landlord unless specifically itemised with these particulars. Please enquire in office or on our website for details on holding deposit and tenancy deposit figures.

Floorplans shown are for approximate measurements only. Exact layouts and sizes may vary. All measurements are not intended to be used for carpet sizes, appliance sizes or items of furniture. For indicative only. Please ask Sales Consultant for further information. All plans are subject to



Awaiting Photograph

Awaiting Photograph

Awaiting Photograph

Awaiting Photograph

Awaiting Photograph

Awaiting Photograph