






CAMLEY STREET LONDON N1C
£850 PER WEEK AVAILABLE 05/04/2025

Hamptons
THE HOME EXPERTS

{ THE PARTICULARS

Camley Street London N1C

£850 Per Week
Furnished

-  2 Bedrooms
-  2 Bathrooms
-  1 Reception

Features

- Canalside Development, - Two Double Bedrooms, - Two Bathrooms (one en suite), - Open Plan Reception, - Modern Fitted Kitchen, - Private Balcony, - Secure Entry with Lift Access, - 24 Hour Concierge, - Located Moments From Coals Drop Yard, Kings Cross, - Council Tax - Band E

Council Tax

Council Tax Band E

Hamptons
97-99 Upper Street
Islington, London, N1 0NP
0207 359 5675
islingtonlettings@hamptons-int.com
www.hamptons.co.uk

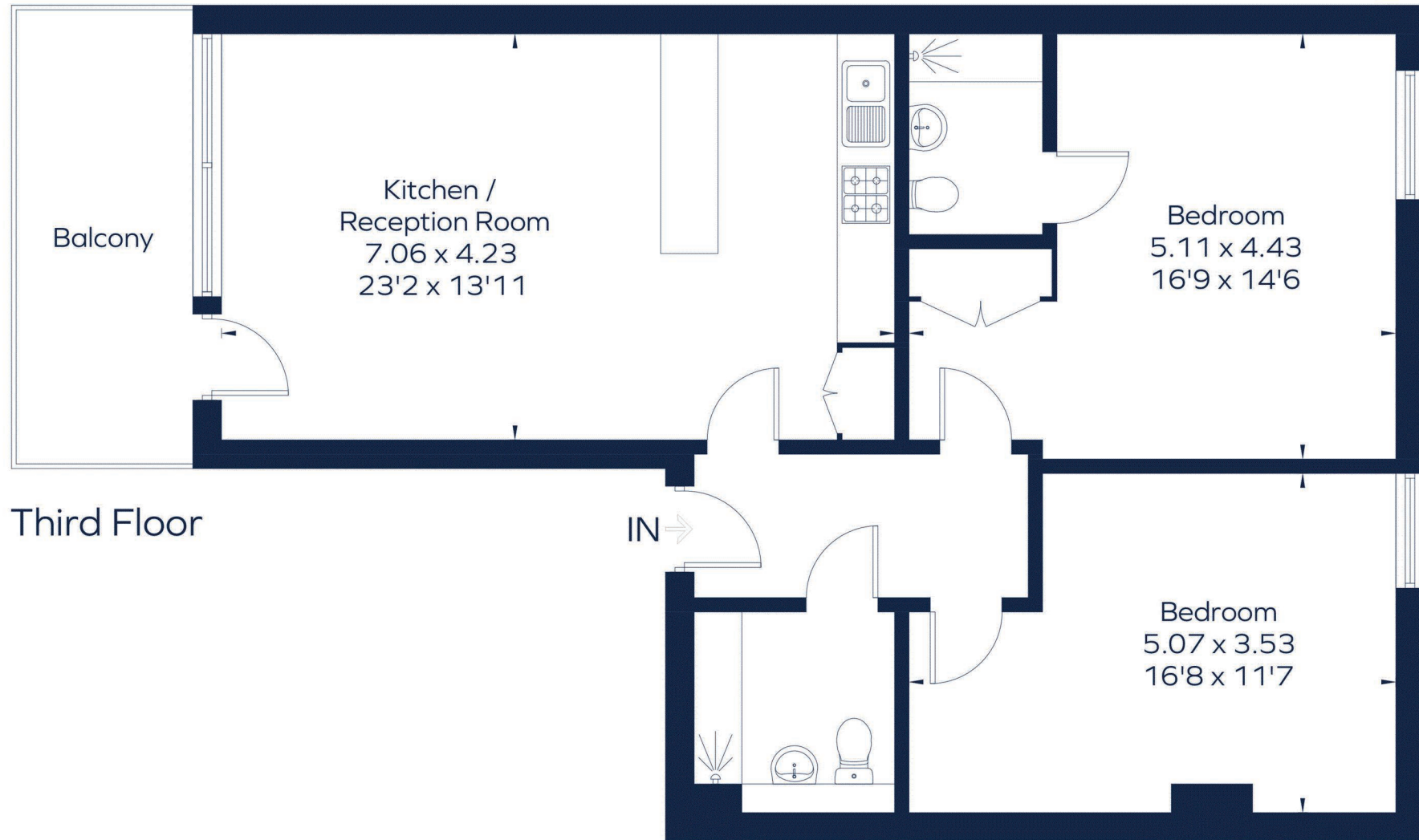
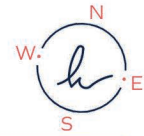
The Property

A new development in the heart of London, Regent's Wharf offers a range of exceptional two and three bedroom apartments for rent just a short walk from King's Cross St Pancras and Camden Town. The property comprises of two double bedrooms, two bathrooms (one en-suite), open plan reception room, modern kitchen and private balcony. The property further benefits from ample storage space and secure entry with lift access and 24 hour concierge. With an emphasis on generous living spaces, enhanced by a high-quality sustainable specification throughout, the apartments provide an exceptional living experience and incredible views of the city from their private roof terraces. Regent's Wharf sits on the bank of Regent's Canal, the historic waterway that flows quietly passed Regent's Park and Camden Market on its way from Little Venice to Docklands.



REGENTS WHARF

Approximate Gross Internal Area = 873 sq. ft. (81.1 sq. m.)



Third Floor

This plan is for layout guidance only. Not drawn to scale unless stated. Windows and door openings are approximate. Whilst every care is taken in the preparation of this plan, please check all dimensions, shapes and compass bearings before making any decisions reliant upon them.
ID 1020259

For Clarification

We wish to inform prospective tenants that we have prepared these particulars as a general guide and they have been confirmed as accurate by the landlord. We have not verified permissions, nor carried out a survey, tested the services, appliances and specific fittings. Room sizes are approximate and measurement figures rounded: they are taken between internal wall surfaces and therefore include cupboards/shelves, etc. Accordingly, they should not be relied upon for

carpets and furnishings. It should also be noted that all fixtures and fittings, carpeted, curtains/blinds, kitchen equipment and garden statuary, whether fitted or not, are deemed removable by the landlord unless specifically itemised with these particulars. Please enquire in office or on our website for details on holding deposit and tenancy deposit figures.

