



PENTONVILLE ROAD LONDON N1
£625 PER WEEK AVAILABLE 29/06/2024

Hamptons

THE HOME EXPERTS

{ THE PARTICULARS

Pentonville Road London N1

£625 Per Week
Furnished

 **1 Bedroom**
 **1 Bathroom**
 **1 Reception**

Features

- Double Bedroom, - Modern Bathroom, -
Warehouse Conversion, - Wood Floors, -
Lift Access, - Private Juliet Style Balcony, -
Bills Included, - Short Let, - Council Tax -
Band D

Council Tax

Council Tax Band D

Hamptons

97-99 Upper Street
Islington, London, N1 ONP
0207 359 5675
islingtonlettings@hamptons-int.com
www.hamptons.co.uk

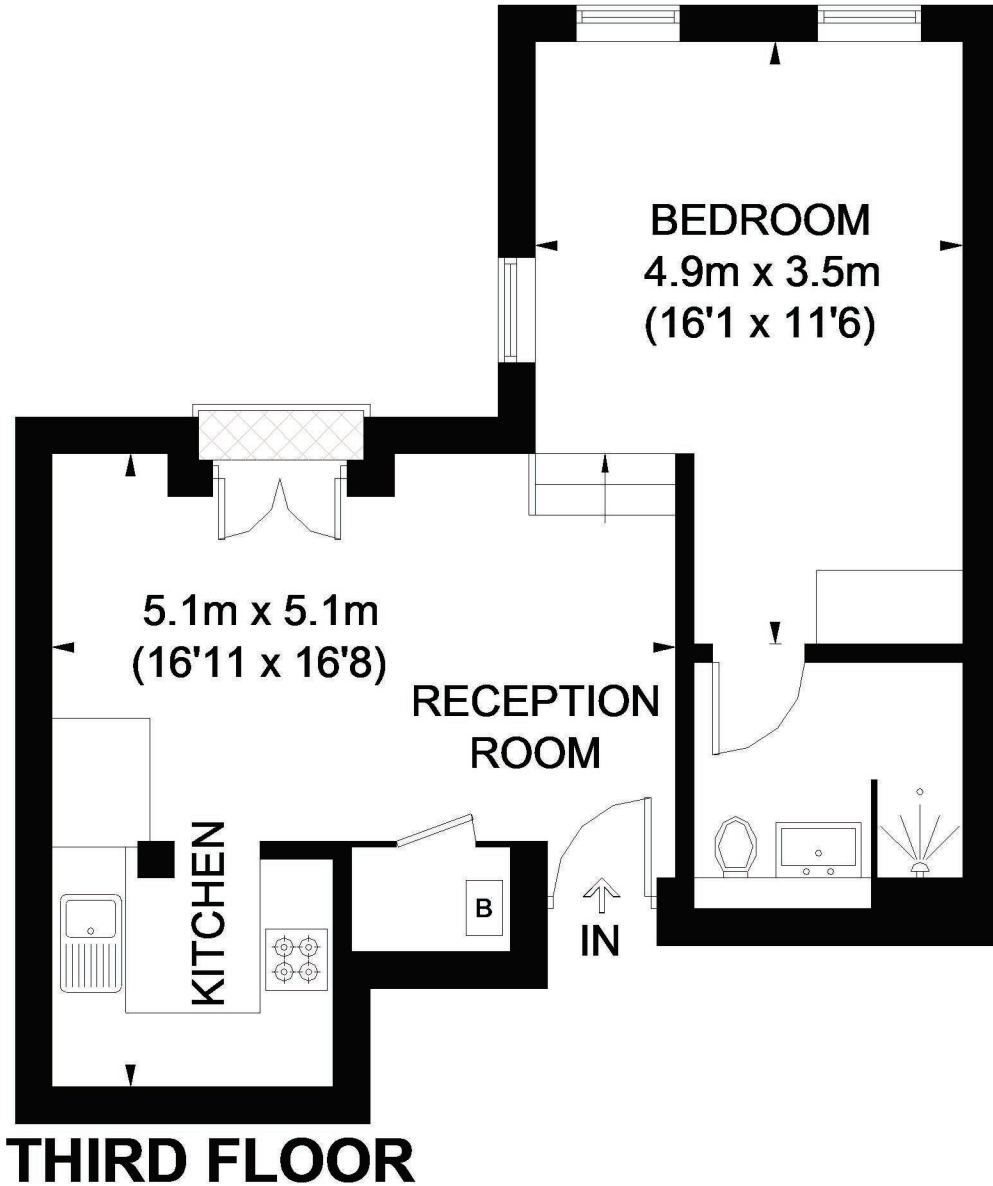
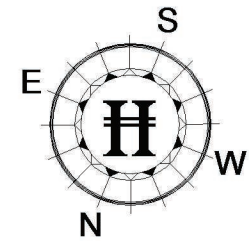
{ WAREHOUSE CONVERSION MINUTES FROM ANGEL STATION

The Property

SHORT LET. Quirky warehouse conversion minutes from Angel Tube Station and the amenities of Upper Street offering modern fittings throughout and south facing views of London.



CITYGATE HOUSE



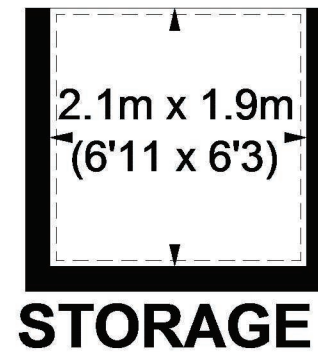
= REDUCED HEADROOM BELOW 1.5M / 5'0

APPROXIMATE GROSS INTERNAL AREA
456 SQ. FT. (42.4 SQ. M.)

SRORAGE / REDUCED HEADROOM
47 SQ. FT. (4.4 SQ. M.)

TOTAL = 503 SQ. FT. (46.8 SQ. M.)

This plan is for layout guidance only.
Not drawn to scale unless stated.
Windows and door openings are approximate. Whilst every care is taken in the preparation of this plan, please check all dimensions, shapes and compass bearings before making any decisions reliant upon them. Please be advised that Hamptons International / our agents have not seen or reviewed any building regulations or planning permission in relation to works carried out to the property (ID144563)



For Clarification

We wish to inform prospective tenants that we have prepared these particulars as a general guide and they have been confirmed as accurate by the landlord. We have not verified permissions, nor carried out a survey, tested the services, appliances and specific fittings. Room sizes are approximate and measurement figures rounded: they are taken between internal wall surfaces and therefore include cupboards/shelves, etc. Accordingly, they should not be relied upon for

carpets and furnishings. It should also be noted that all fixtures and fittings, carpeted, curtains/blinds, kitchen equipment and garden statuary, whether fitted or not, are deemed removable by the landlord unless specifically itemised with these particulars. Please enquire in office or on our website for details on holding deposit and tenancy deposit figures.



Awaiting Photograph

Awaiting Photograph