

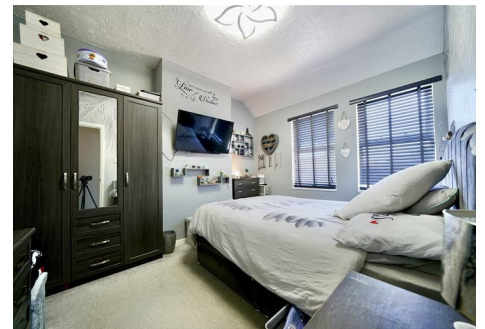


Instinct Guides You



## East Street, Chickerell, Weymouth £340,000

- Semi-Detached Home
- Three Bedrooms
- Loft
- Open-Plan Dining
- Side and Front Off-Road Parking
- Rear Garden Access
- Close to Village Amenities
- Spacious Upstairs Landing



Registration No. 08079158 Directors Mr Wilson, Mr Tominey

Courtesy Notice Upon using WilsonTominey as selling agents ensure we are made aware of contractual obligations you may be under. We can then proceed accordingly.

WilsonTominey Ltd  
15 Westham Rd.  
DT4 8NS

T 01305 775500  
E sales@wilsontominey.co.uk  
W www.wilsontominey.co.uk





Situated in the heart of Chickerell, Weymouth, this attractive SEMI-DETACHED property offers THREE BEDROOMS, and a loft. Immaculately presented throughout, the home benefits from a spacious living area and OFF-ROAD PARKING.

An attractive glazed porch welcomes, leads to the hallway that opens into the spacious living room, which is beautifully lit by a large bay window. Adjoining the living room is the open-plan dining area, which offers ample space for entertaining and connects conveniently to the kitchen. The kitchen is finished to a high standard, with modern cabinetry, integrated appliances, tiled splashbacks and a side door providing direct access to the garden.

Ascending to the first floor, the landing leads to three bedrooms and the family bathroom. The principal bedroom is a bright double room. Bedroom two and three are both doubles and over look the garden. The bathroom has been tastefully modernised and includes a full-sized bath, a walk in shower, a sleek vanity unit and a large window allowing in natural light.

A further paddle staircase leads to the converted loft room, perfect for a home office or workspace, featuring a skylight.

Outside, the rear garden has been landscaped with a paved patio, a useful outbuilding that could be used as a home office, gym or storage. The front of the property offers off-road parking and a side access path leading to the rear.

This is a fantastic opportunity to acquire a well-proportioned and beautifully finished home in a pretty village location within easy reach of local amenities, schools and transport links.

Room Dimensions

Lounge 12'9" x 10'0" (3.9 x 3.06)

Dining Room 13'6" x 11'6" (4.12 x 3.52)

Kitchen 15'1" x 8'9" (4.61 x 2.69)

Bedroom One 11'11" x 9'11" (3.64 x 3.03)

Bedroom Two 9'8" x 7'8" (2.96 x 2.34)

Bedroom Three 9'9" x 8'10" (2.99 x 2.70)

Bathroom 8'7" x 8'7" (2.63 x 2.63)

Loft 15'5" x 9'1" max floor measurement (4.70m x 2.77m max floor measurement)



Energy Efficiency Rating		
	Current	Potential
Very energy efficient - lower running costs		
(92 plus) A		
(81-91) B		
(69-80) C		
(55-68) D		
(39-54) E		
(21-38) F		
(1-20) G		
Not energy efficient - higher running costs		
52		78
England & Wales		EU Directive 2002/91/EC

Environmental Impact (CO <sub>2</sub> ) Rating		
	Current	Potential
Very environmentally friendly - lower CO <sub>2</sub> emissions		
(92 plus) A		
(81-91) B		
(69-80) C		
(55-68) D		
(39-54) E		
(21-38) F		
(1-20) G		
Not environmentally friendly - higher CO <sub>2</sub> emissions		
England & Wales		EU Directive 2002/91/EC

Important Notice: Particulars are prepared for marketing purposes only and should not be treated as a statement of the condition of any building, fixture or appliance. All measurements, floor plans and lease/ maintenance are approximate and not to be relied upon. Purchasers should make their own checks before relying on any of the information provided herein. \* For double glazing and gas radiator heating, it is where specified.