

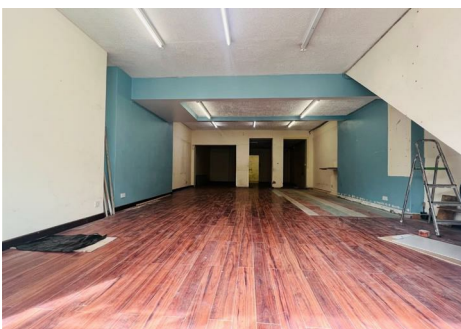


Instinct Guides You



Abbotsbury Road, Weymouth £750 PCM

- Large Shop
- Front Forecourt
- Rear Access
- EPC - In Progress
- Available Now
- Close To Town
- Storeroom
- Long Term



Registration No. 08079158 Directors Mr Wilson, Mr Tominey

Courtesy Notice Upon using WilsonTominey as selling agents ensure we are made aware of contractual obligations you may be under. We can then proceed accordingly.

WilsonTominey Ltd
15 Westham Rd.
DT4 8NS

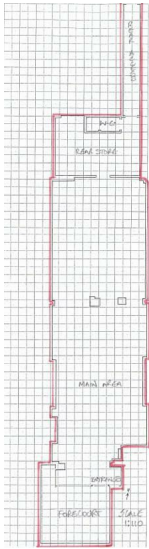
T 01305 775500
E sales@wilsontominey.co.uk
W www.wilsontominey.co.uk



A very spacious and versatile retail unit of approximately 1,150 sq ft is now available for long-term. The property features a large open-plan shop area, back store room area, convenient rear access, and a front forecourt which is ideal product display. It also benefits from on-site toilet facilities and offers excellent visibility and footfall, making it suitable for a wide range of business uses (subject to necessary consents). This is a fantastic opportunity for retailers seeking a well-positioned, long-term premises.

To enquire call us on 01305 775500 (opt 4) or email let@wilsontominey.com

Room Dimensions



Energy Efficiency Rating		
	Current	Potential
Very energy efficient - lower running costs		
(92 plus) A		
(81-91) B		
(69-80) C		
(55-68) D		
(39-54) E		
(21-38) F		
(1-20) G		
Not energy efficient - higher running costs		
England & Wales		
EU Directive 2002/91/EC		

Environmental Impact (CO ₂) Rating		
	Current	Potential
Very environmentally friendly - lower CO ₂ emissions		
(92 plus) A		
(81-91) B		
(69-80) C		
(55-68) D		
(39-54) E		
(21-38) F		
(1-20) G		
Not environmentally friendly - higher CO ₂ emissions		
England & Wales		
EU Directive 2002/91/EC		

Important Notice: Particulars are prepared for marketing purposes only and should not be treated as a statement of the condition of any building, fixture or appliance. All measurements, floor plans and lease/ maintenance are approximate and not to be relied upon. Purchasers should make their own checks before relying on any of the information provided herein. * For double glazing and gas radiator heating, it is where specified.