



Instinct Guides You



Lilly Lane, Weymouth, DT3 4FU
Offers In Excess Of £390,000

Registration No. 08079158 Directors Mr Wilson, Mr Tominey

Courtesy Notice Upon using WilsonTominey as selling agents ensure we are made aware of contractual obligations you may be under. We can then proceed accordingly.

WilsonTominey Ltd
15 Westham Rd.
DT4 8NS

T 01305 775500
E sales@wilsontominey.co.uk
W www.wilsontominey.co.uk



Wilson Tominey are delighted to offer this beautifully presented, WESTERLY semi-detached family home. Positioned in the heart of Chickerell close to a bus route, amenities and schools, this superb property boasts three double bedrooms, bathroom & en-suite, garage & parking with an attractive low maintenance WESTERLY aspect garden.

Inside, the hub of the home is the open-plan kitchen/diner, this generous layout offers an attractive space for family living and to entertain. The kitchen is fully fitted, equipped with an integrated oven and hob, fridge/freezer and dishwasher finished with ample work surface. Adjacent, the UTILITY room offers further practicality, including a large under-stairs cupboard and direct access to the garden.

The sitting room offers a generous bright airy space thanks to its dual aspect and double doors that merge the boundaries between home and garden. A feature fire place provides a focal point and a touch of charm to the room. A spacious cloakroom finishes the ground floor.

Rising to the upper floor you are greeted with three double bedrooms, an en-suite and family bathroom. Bedroom one is a generous size with ample room for furniture and benefits from a well appointed shower room en-suite and built in wardrobes. . In addition bedrooms two and three offer further double rooms, with bedroom three enjoying views over the rear garden. The family bathroom comprises a bath with a shower over, WC and wash basin complimented by contemporary tiling and colour schemes.

The rear garden has an excellent westerly aspect and is low maintenance creating a great space for family living and entertaining. A gate at the rear of the garden leads to the garage and allocated parking.

Kitchen/Diner 18'10" max x 10'11" max (5.75m max x 3.35m max)

Lounge 18'10" x 11'1" (5.76m x 3.39m)

Utility 7'6" max x 6'8" max (2.29m max x 2.05m max)

Bedroom One 11'9" x 11'1" (3.60m x 3.39m)

Bedroom Two 12'4" max x 9'2" max (3.77m max x 2.81m max)

Bedroom Three 12'4" max x 9'4" max (3.76m max x 2.87m max)

Bathroom

En-suite

Agents Notes

The seller informs us there is a service charge of approx £200pa for upkeep and maintenance of green areas and shared paths on the development.

We recommend these details be checked by a solicitor before incurring costs.



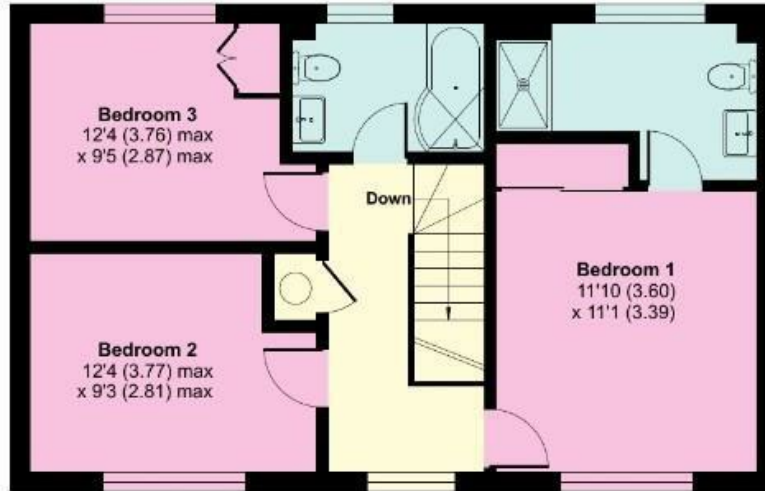
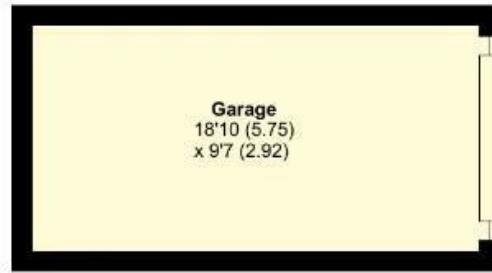
Lilly Lane, Chickerell, Weymouth, DT3

Approximate Area = 1156 sq ft / 107.3 sq m

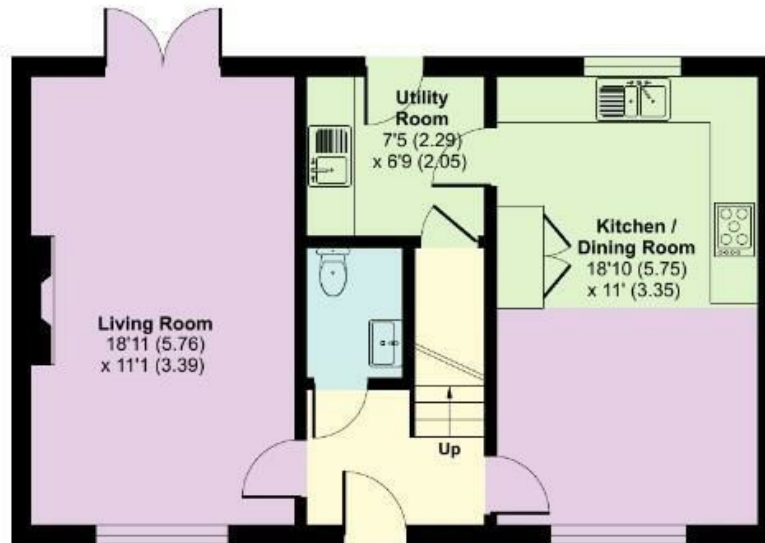
Garage = 181 sq ft / 16.8 sq m

Total = 1337 sq ft / 124.1 sq m

For identification only - Not to scale



FIRST FLOOR



GROUND FLOOR



Floor plan produced in accordance with RICS Property Measurement Standards incorporating International Property Measurement Standards (IPMS2 Residential). © nichcom 2024. Produced for Wilson Tominey Ltd. REF: 1220404



Energy Efficiency Rating			Environmental Impact (CO ₂) Rating		
	Current	Potential		Current	Potential
Very energy efficient - lower running costs			Very environmentally friendly - lower CO ₂ emissions		
(92 plus) A		100	(92 plus) A		
(81-91) B	84		(81-91) B		
(69-80) C			(69-80) C		
(55-68) D			(55-68) D		
(39-54) E			(39-54) E		
(21-38) F			(21-38) F		
(1-20) G			(1-20) G		
Not energy efficient - higher running costs			Not environmentally friendly - higher CO ₂ emissions		
England & Wales	EU Directive 2002/91/EC		England & Wales	EU Directive 2002/91/EC	

Important Notice: Particulars are prepared for marketing purposes only and should not be treated as a statement of the condition of any building, fixture or appliance. All measurements, floor plans and lease/ maintenance are approximate and not to be relied upon. Purchasers should make their own checks before relying on any of the information provided herein. * For double glazing and gas radiator heating, it is where specified.