



Instinct Guides You



Cross Road, Weymouth £230,000

- No Onward Chain
- Private Balcony
- Beautifully Presented Throughout
- Bathroom & En-Suite
- One Allocated Parking Space
- Well Proportioned Throughout
- Rodwell, Weymouth
- Lift Access To All Floors



Registration No. 08079158 Directors Mr Wilson, Mr Tominey

Courtesy Notice Upon using WilsonTominey as selling agents ensure we are made aware of contractual obligations you may be under. We can then proceed accordingly.

WilsonTominey Ltd
15 Westham Rd.
DT4 8NS

T 01305 775500
E sales@wilsontominey.co.uk
W www.wilsontominey.co.uk



Offered with no onward chain is this well-presented two-bedroom apartment located in the sought-after Churchill Gardens, Cross Road. The home boasts a principal bedroom with EN-SUITE, a private balcony & allocated parking. Nearby is a range of amenities and easy bus access to Weymouth & Portland.

Positioned on the first floor its elevated position creates bright living spaces throughout & the block benefits from lift access to all floors. The lounge is large enough for a range of furniture and encapsulates the essence of light with access to the balcony via double doors helping to merge the boundaries of the home and garden.

The kitchen/diner adjacent is particularly generous, with ample storage and work surfaces benefitting from a built-in dishwasher, oven/hob, fridge freezer, and washing machine. Dual-aspect windows illuminate the room with plentiful space for a dining table.

Both bedrooms are doubles with bedroom one enjoying a well-appointed shower room en-suite and practical built-in wardrobes. The family bathroom comprises a bath with shower over, wash hand basin and W.C. A large storage cupboard in the hallway completes the property.

Viewable via the balcony, the communal grounds are well maintained with a range of attractive shrubs and bushes creating a pleasant outlook. One parking space can be found within the grounds.



Room Dimensions

Lounge 13'1" x 12'9" (4.0 x 3.91)

Kitchen 13'1" x 11'10" (4.0 x 3.63)

Bedroom one 13'2" x 8'5" plus door recess (4.03 x 2.57 plus door recess)

Bedroom two 9'4" plus door recess x 9'1" (2.85 plus door recess x 2.77)

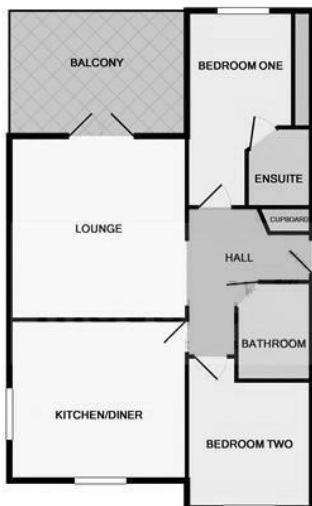
Bathroom

En-suite

Lease & Maintenance Information

The vendor informs us the property has a remaining lease of 106 years, the ground rent is £200pa and a service charge of £832.50 paid every six months, pets are allowed with permission however holiday lets are forbidden.

We recommend these details are checked by a solicitor before incurring costs.



Energy Efficiency Rating		Current	Potential
Very energy efficient - lower running costs			
(92 plus)	A		
(81-91)	B		
(69-80)	C		
(55-68)	D		
(39-54)	E		
(21-38)	F		
(1-20)	G		
Not energy efficient - higher running costs			
England & Wales		EU Directive 2002/91/EC	

Environmental Impact (CO ₂) Rating		Current	Potential
Very environmentally friendly - lower CO ₂ emissions			
(92 plus)	A		
(81-91)	B		
(69-80)	C		
(55-68)	D		
(39-54)	E		
(21-38)	F		
(1-20)	G		
Not environmentally friendly - higher CO ₂ emissions			
England & Wales		EU Directive 2002/91/EC	

Important Notice: Particulars are prepared for marketing purposes only and should not be treated as a statement of the condition of any building, fixture or appliance. All measurements, floor plans and lease/ maintenance are approximate and not to be relied upon. Purchasers should make their own checks before relying on any of the information provided herein. * For double glazing and gas radiator heating, it is where specified.