



WILDWOOD TERRACE NW3
£6,995 PER MONTH AVAILABLE 01/07/2025

Hamptons
THE HOME EXPERTS

{ THE PARTICULARS

Wildwood Terrace NW3

£6,995 Per Month
Unfurnished

 3 Bedrooms
 3 Bathrooms
 2 Receptions

Features

- Victorian House with blue plaque, - Three double bedrooms, - Three En-Suite Bathrooms, - Available July, - Unfurnished, - Council Tax Band G

Council Tax

Council Tax Band G

Hamptons
21 Heath Street
Hampstead, London, NW3 6TR
020 7431 4462
HampsteadLettings@hamptons.co.uk
www.hamptons.co.uk

The Property

This charming three bedroom, three bathroom Victorian family home comprises of a bright 26' double reception room with high ceilings, fireplace and period features is laid out across the ground floor. The entertaining space is further enhanced with a stylish modern kitchen and moody dining room on the lower floor which, as with the utility/boot room, leads directly out to a delightful courtyard garden. The indulgent principle suite occupies the entire first floor, with two further en-suite bedrooms positioned on the floor above.

Outside

The house is further complimented by a pretty and established south west facing courtyard rear garden.



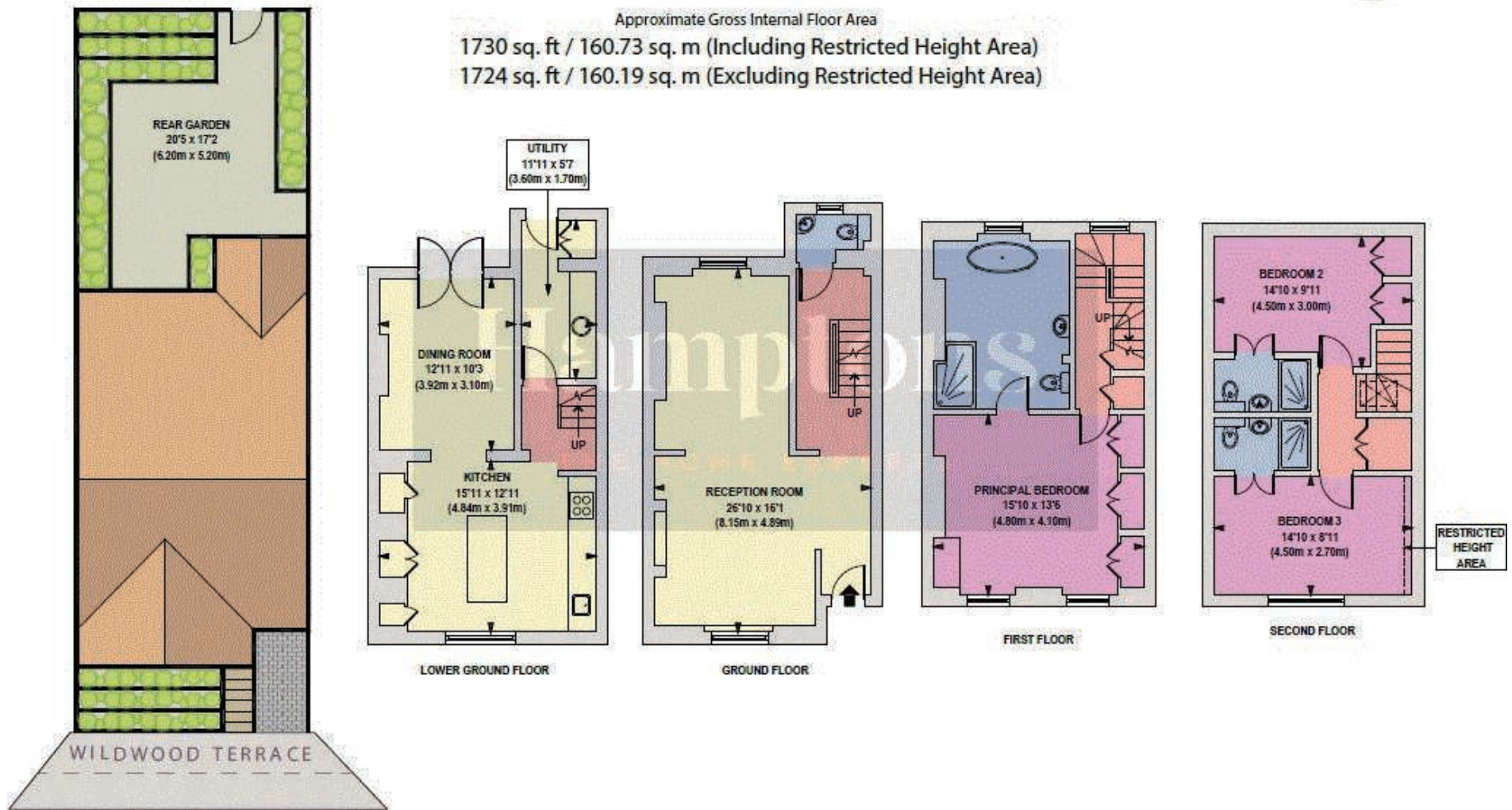
L o n d o n



Approximate Gross Internal Floor Area

1730 sq. ft / 160.73 sq. m (Including Restricted Height Area)

1724 sq. ft / 160.19 sq. m (Excluding Restricted Height Area)



Floorplan is for illustrative purposes only and is not to scale. Every attempt has been made to ensure the accuracy of the floor plan shown, however all measurements, fixtures, fittings and data shown are an approximate interpretation for illustrative purposes only. Liability for errors, omissions or mis-statement through negligence or otherwise is hereby excluded.

For Clarification

We wish to inform prospective tenants that we have prepared these particulars as a general guide and they have been confirmed as accurate by the landlord. We have not verified permissions, nor carried out a survey, tested the services, appliances and specific fittings. Room sizes are approximate and measurement figures rounded: they are taken between internal wall surfaces and therefore include cupboards/shelves, etc. Accordingly, they should not be relied upon for

carpets and furnishings. It should also be noted that all fixtures and fittings, carpeted, curtains/blinds, kitchen equipment and garden statuary, whether fitted or not, are deemed removable by the landlord unless specifically itemised with these particulars. Please enquire in office or on our website for details on holding deposit and tenancy deposit figures.

