



{ LEESIDE CRESCENT LONDON NW11  
£3,792 PER MONTH AVAILABLE 26/05/2025




Hamptons  
THE HOME EXPERTS



# { THE PARTICULARS

Leeside Crescent London NW11

£3,792 Per Month  
Furnished

 3 Bedrooms  
 2 Bathrooms  
 1 Reception

## Features

- Three Bedroom, - Private Garden, - 5  
Week Deposit, - House, - Council Tax Band  
F

## Council Tax

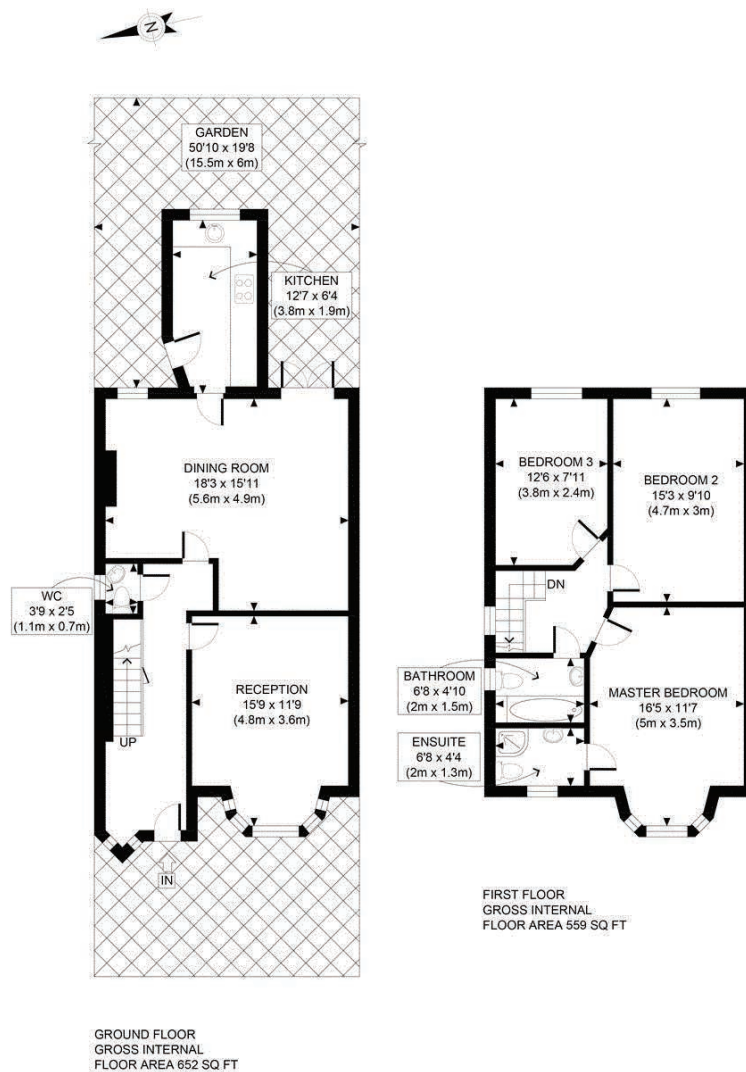
Council Tax Band F

Hamptons  
21 Heath Street  
Hampstead, London, NW3 6TR  
020 7431 4462  
HampsteadLettings@hamptons.co.uk  
www.hamptons.co.uk

## The Property

A bright and spacious three double bedroom family home located in the centre of Temple Fortune and 0.1m from the local amenities that Finchley Road has to offer. This property offers over 1700 sq ft of well-planned accommodation which includes a generous open plan kitchen/family room leading onto a private garden, second reception room, principal bedroom with bay window and en-suite shower room, 2 further double bedrooms, 1 family bathroom, utility room and a guest W.C. Further benefits include double glazed windows, good storage and modern fixtures and fittings throughout.





APPROX. GROSS INTERNAL FLOOR AREA 1211 SQ FT / 113 SQM

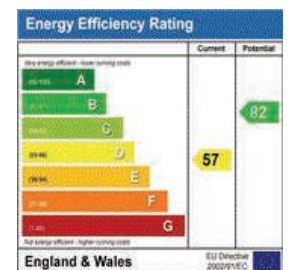
Ref: Copyright **photoplan**

Disclaimer: Floor plan measurements are approximate and are for illustrative purposes only.  
While we do not doubt the floor plan accuracy and completeness, you or your advisors should  
conduct a careful, independent investigation of the property in respect of monetary valuation

#### For Clarification

We wish to inform prospective tenants that we have prepared these particulars as a general guide and they have been confirmed as accurate by the landlord. We have not verified permissions, nor carried out a survey, tested the services, appliances and specific fittings. Room sizes are approximate and measurement figures rounded: they are taken between internal wall surfaces and therefore include cupboards/shelves, etc. Accordingly, they should not be relied upon for

carpets and furnishings. It should also be noted that all fixtures and fittings, carpeted, curtains/blinds, kitchen equipment and garden statuary, whether fitted or not, are deemed removable by the landlord unless specifically itemised with these particulars. Please enquire in office or on our website for details on holding deposit and tenancy deposit figures.







Awaiting Photograph

Awaiting Photograph

Awaiting Photograph