



{ MONTPELIER SQUARE LONDON SW7  
£10,000 PER WEEK AVAILABLE 01/12/2025




Hamptons  
THE HOME EXPERTS



# { THE PARTICULARS

Montpelier Square London SW7

£10,000 Per Week  
Furnished

 6 Bedrooms  
 4 Bathrooms  
 1 Reception

## Features

- Six Double Bedrooms, - Four Bathrooms,  
- Moments from Hyde Park, - Well Located  
For All Shopping Amenities, - Private Lift  
Council Tax  
Council Tax Band H

Hamptons  
7 Lower Sloane Street  
Sloane Square, London, SW1W 8AH  
020 7824 8242  
[sloanesquarelettings@hamptons.co.uk](mailto:sloanesquarelettings@hamptons.co.uk)  
[www.hamptons.co.uk](http://www.hamptons.co.uk)

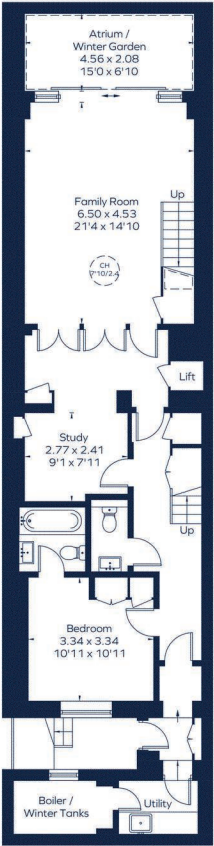
## The Property

SHORT LET. Located in the sought after Montpelier Square, in Knightsbridge, this exceptional 6 bedroom, 4 bathroom home offers a great blend of elegance and modern convenience. Spanning multiple floors, the property features spacious living areas, excellent finished and a private lift for effortless access. Situated moments from Hyde Park and world class shopping at Harrods, the property offers a great opportunity to experience living in a much desired spot.

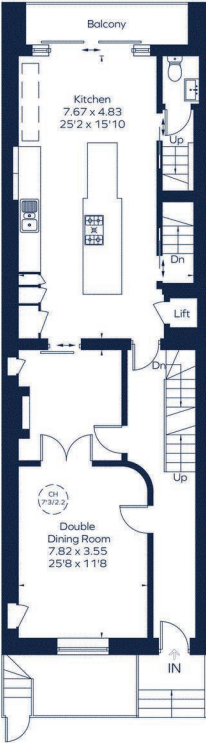


MONTPELIER SQUARE

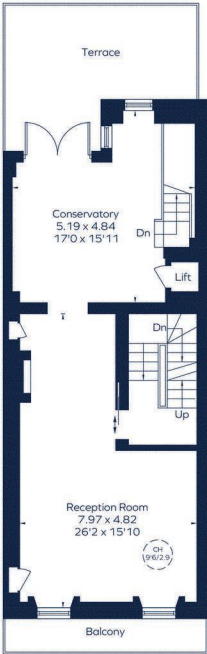
Approximate Gross Internal Area = 4056 sq. ft. (376.81 sq. m.)



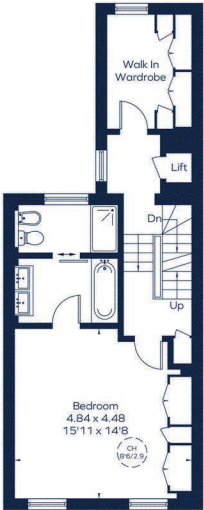
Lower Ground Floor



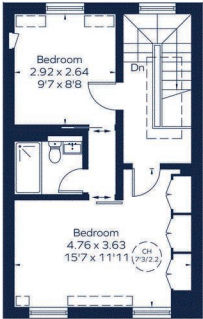
Raised Ground Floor



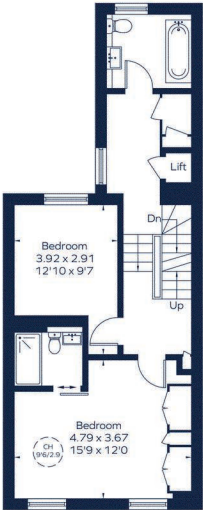
First Floor



Second Floor



Fourth Floor



Third Floor

Drawn for illustration and identification purposes only.  
ID 1162406

For Clarification

We wish to inform prospective tenants that we have prepared these particulars as a general guide and they have been confirmed as accurate by the landlord. We have not verified permissions, nor carried out a survey, tested the services, appliances and specific fittings. Room sizes are approximate and measurement figures rounded: they are taken between internal wall surfaces and therefore include cupboards/shelves, etc. Accordingly, they should not be relied upon for

carpets and furnishings. It should also be noted that all fixtures and fittings, carpeted, curtains/blinds, kitchen equipment and garden statuary, whether fitted or not, are deemed removable by the landlord unless specifically itemised with these particulars. Please enquire in office or on our website for details on holding deposit and tenancy deposit figures.

