



**DRAYCOTT PLACE LONDON SW3**  
**£550 PER WEEK** AVAILABLE 23/06/2025

**Hamptons**  
THE HOME EXPERTS

# { THE PARTICULARS

Draycott Place London SW3

£550 Per Week  
Furnished

 1 Bathroom  
 1 Reception

## Features

- Newly Refurbished, - Studio Room, - New Kitchen, - New Bathroom, - Wooden floors, - Freshly Painted, - Lift, - Furnished, - 291 Square Feet, - Council Tax Band E, - Available 13th June 2025

## Council Tax

Council Tax Band E

Hamptons  
7 Lower Sloane Street  
Sloane Square, London, SW1W 8AH  
020 7824 8242  
[sloanesquarelettings@hamptons.co.uk](mailto:sloanesquarelettings@hamptons.co.uk)  
[www.hamptons.co.uk](http://www.hamptons.co.uk)

# { NEWLY REFURBISHED STUDIO APARTMENT WITH NEW KITCHEN AND BATHROOM

## The Property

A fantastic studio apartment located on the third floor of this period conversion with lift and located close to Sloane Square. Freshly refurbished with new kitchen and shower room and fully redecorated throughout the apartment. The apartment benefits from wood flooring, abundance of natural light and a lift. Available now furnished.

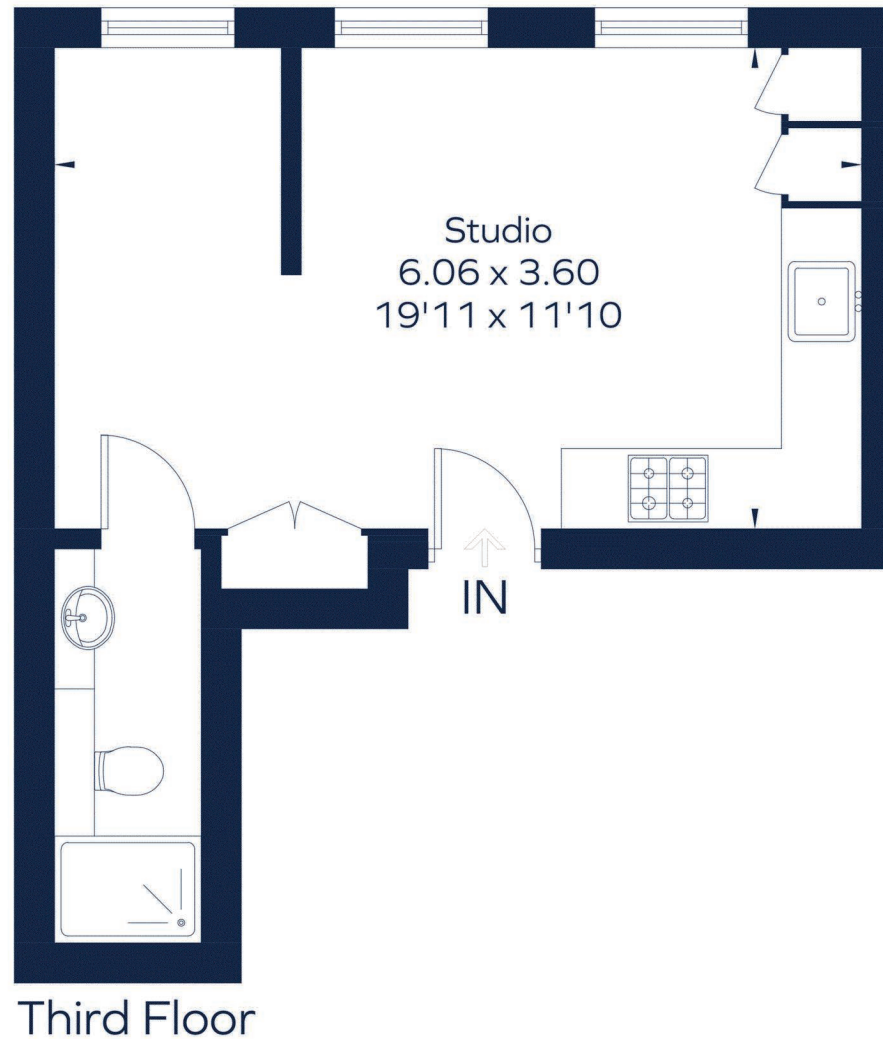
## Location

Draycott Place is a pretty residential address tucked away from the many bustling shops, bars and restaurants along King's Road with South Kensington and Knightsbridge also within close proximity. Sloane Square is 0.3 miles away offering the Circle & District Lines and South Kensington, offering the same and to include the Piccadilly Line is 0.6 miles away with easy access to London's Museums on Exhibition Road.





Approximate Gross Internal Area  
Third floor = 278 sq. ft. (25.9 sq. m.)



This plan is for layout guidance only. Not drawn to scale unless stated. Windows and door openings are approximate. Whilst every care is taken in the preparation of this plan, please check all dimensions, shapes and compass bearings before making any decisions reliant upon them.

### For Clarification

We wish to inform prospective tenants that we have prepared these particulars as a general guide and they have been confirmed as accurate by the landlord. We have not verified permissions, nor carried out a survey, tested the services, appliances and specific fittings. Room sizes are approximate and measurement figures rounded: they are taken between internal wall surfaces and therefore include cupboards/shelves, etc. Accordingly, they should not be relied upon for

carpets and furnishings. It should also be noted that all fixtures and fittings, carpeted, curtains/blinds, kitchen equipment and garden statuary, whether fitted or not, are deemed removable by the landlord unless specifically itemised with these particulars. Please enquire in office or on our website for details on holding deposit and tenancy deposit figures.

