



{ SYDNEY STREET LONDON SW3  
£595 PER WEEK AVAILABLE 14/07/2025

Hamptons  
THE HOME EXPERTS

# { THE PARTICULARS

Sydney Street London SW3

£595 Per Week  
Furnished

 1 Bedroom  
 1 Bathroom  
 1 Reception

## Features

- One Bedroom, - 534 Squared Feet, -  
Wood Floors, - Private Patio, - Modern  
kitchen, - Modern Bathroom, - Available  
Mid-June 2023, - Council Tax Band E

## Council Tax

Council Tax Band E

Hamptons  
7 Lower Sloane Street  
Sloane Square, London, SW1W 8AH  
020 7824 8242  
[sloanesquarelettings@hamptons.co.uk](mailto:sloanesquarelettings@hamptons.co.uk)  
[www.hamptons.co.uk](http://www.hamptons.co.uk)

# { A LOVELY, MODERN ONE BEDROOM APARTMENT WITH PATIO GARDEN

## The Property

A lovely, modern one bedroom apartment with patio garden on the lower ground floor with wood flooring offering over 500 square feet of lateral living space. The accommodation comprises open plan reception room with modern fitted kitchen, double bedroom to the rear with well designed fitted cupboards, private patio garden accessed via French doors providing good natural light and a sleek large shower room. The apartment further benefits from a desk area between the reception and bedroom and also a large internal storage vault as you enter the apartment with the washing machine and storage for coats and shoes. Offered furnished.

## Location

Located on Sydney Street close to the Fulham Road and 0.3 miles from South Kensington underground station offering Piccadilly, Circle & District Lines.





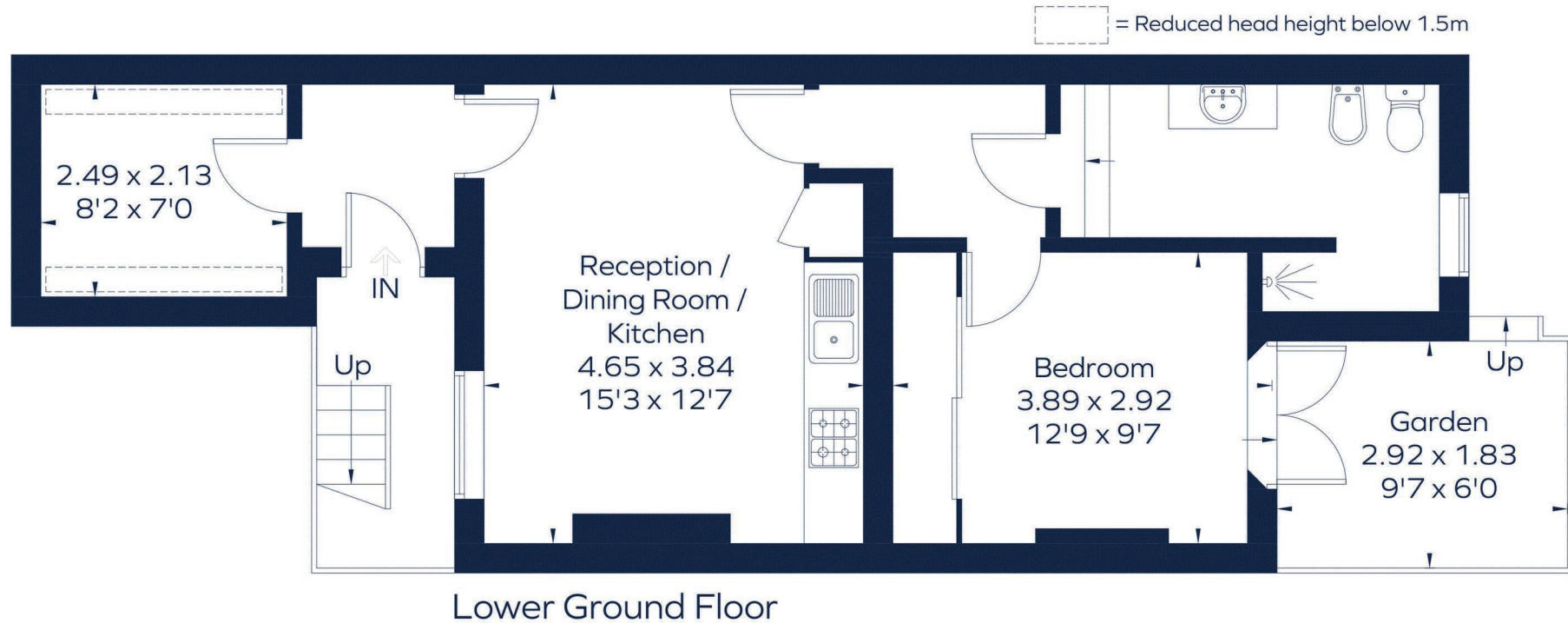
## SYDNEY STREET

Approximate Gross Internal Area (excluding reduced headroom)

Lower Ground floor = 518 sq. ft. (48.1 sq. m.)

Reduced headroom = 16 sq. ft. (1.5 sq. m.)

Total = 534 sq. ft. (49.6 sq. m.)



This plan is for layout guidance only. Not drawn to scale unless stated. Windows and door openings are approximate. Whilst every care is taken in the preparation of this plan, please check all dimensions, shapes and compass bearings before making any decisions reliant upon them.  
ID 961539

### For Clarification

We wish to inform prospective tenants that we have prepared these particulars as a general guide and they have been confirmed as accurate by the landlord. We have not verified permissions, nor carried out a survey, tested the services, appliances and specific fittings. Room sizes are approximate and measurement figures rounded: they are taken between internal wall surfaces and therefore include cupboards/shelves, etc. Accordingly, they should not be relied upon for

carpets and furnishings. It should also be noted that all fixtures and fittings, carpeted, curtains/blinds, kitchen equipment and garden statuary, whether fitted or not, are deemed removable by the landlord unless specifically itemised with these particulars. Please enquire in office or on our website for details on holding deposit and tenancy deposit figures.

