



{ BELGRAVE MEWS SOUTH LONDON SW1X  
£2,077 PER WEEK AVAILABLE 19/05/2025




Hamptons  
THE HOME EXPERTS



# { THE PARTICULARS

Belgrave Mews South London  
SW1X

£2,077 Per Week  
Furnished

 2 Bedrooms  
 2 Bathrooms  
 1 Reception

## Features

- Mews House, - Two Bedrooms, - Two En-Suite Facilities, - Guest WC, - Parquet Wood Floor, - Exposed Beams, - Balcony, - 1111 Squared Feet, - Furnished, - Council Tax Band G

## Council Tax

Council tax band not specified

Hamptons  
7 Lower Sloane Street  
Sloane Square, London, SW1W 8AH  
020 7824 8242  
[sloanesquarelettings@hamptons.co.uk](mailto:sloanesquarelettings@hamptons.co.uk)  
[www.hamptons.co.uk](http://www.hamptons.co.uk)

# { A STUNNING TWO BEDROOM MEWS HOUSE IN THIS HIGHLY DESIRABLE AREA

## The Property

A stunning two bedroom Mews House in this highly desirable area, offering two lovely bedrooms with exposed beams along with en-suite facilities. Dressed with high end furniture and designer wallpaper, this Mews House offers 1,111 squared feet of modern living space, a delightful ground floor reception room with parquet wood flooring leading a modern fully equipped integrated kitchen. To the first floor are the two double bedroom suites, one with en-suite shower room and the principal bedroom with en-suite bathroom including a separate shower and access to the balcony, with a skylight above the stairs providing an abundance of natural light. A very rare opportunity to rent such a charming house, available now on a furnished basis.

## Location

Located in Belgrave Mews accessed from Belgrave Place and parallel to Eaton Place & Belgrave Square. Hyde Park Corner underground station is half a mile away offering the Piccadilly Line and Victoria over ground and underground are also located near by (0.6 miles away) providing fabulous transport links with a large selection of high end shopping in the area along with healthy selection of restaurants.



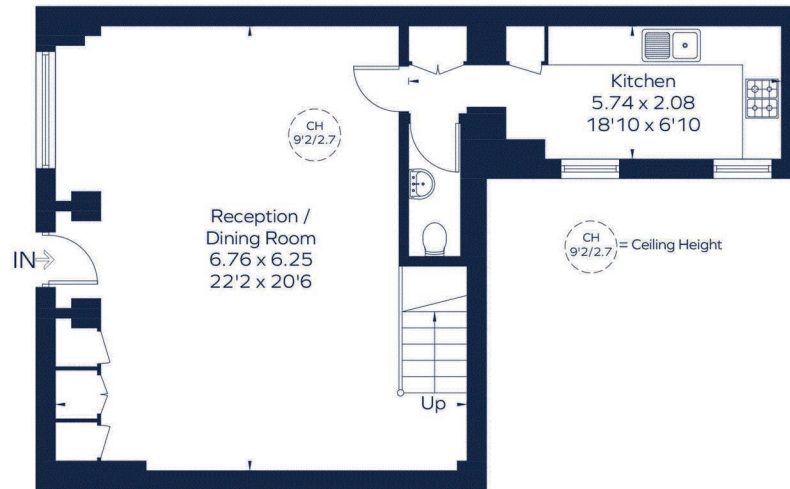
# BELGRAVE MEWS SOUTH

Approximate Gross Internal Area

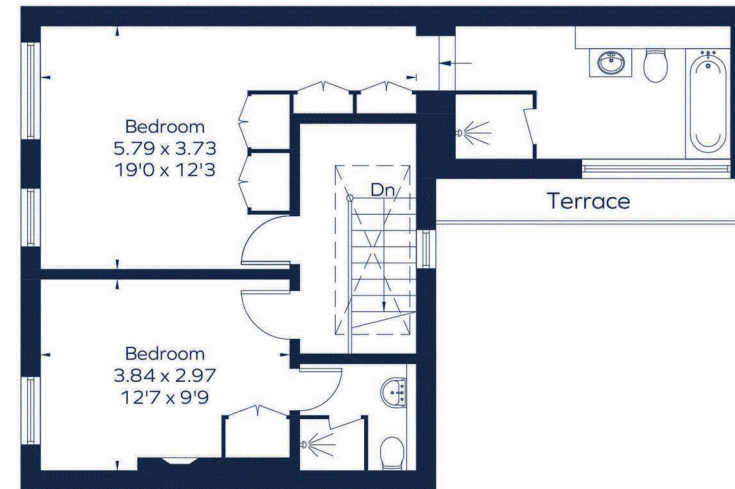
Ground floor = 576 sq. ft. (53.5 sq. m.)

First floor = 535 sq. ft. (49.7 sq. m.)

Total = 1111 sq. ft. (103.2 sq. m.)



Ground Floor



First Floor

This plan is for layout guidance only. Not drawn to scale unless stated. Windows and door openings are approximate. Whilst every care is taken in the preparation of this plan, please check all dimensions, shapes and compass bearings before making any decisions reliant upon them.  
ID 1181824

## For Clarification

We wish to inform prospective tenants that we have prepared these particulars as a general guide and they have been confirmed as accurate by the landlord. We have not verified permissions, nor carried out a survey, tested the services, appliances and specific fittings. Room sizes are approximate and measurement figures rounded: they are taken between internal wall surfaces and therefore include cupboards/shelves, etc. Accordingly, they should not be relied upon for

carpets and furnishings. It should also be noted that all fixtures and fittings, carpeted, curtains/blinds, kitchen equipment and garden statuary, whether fitted or not, are deemed removable by the landlord unless specifically itemised with these particulars. Please enquire in office or on our website for details on holding deposit and tenancy deposit figures.

