






{ EMBANKMENT GARDENS LONDON SW3
£1,095 PER WEEK AVAILABLE 10/03/2025

Hamptons
THE HOME EXPERTS

{ THE PARTICULARS

Embankment Gardens London
SW3

£1,095 Per Week
Furnished

 2 Bedrooms
 2 Bathrooms
 1 Reception

Features

- 2 Bedrooms, - 2 Bathrooms, - 3rd Floor, -
Lift, - Furnished, - Close to the River, - 858
Squared Feet, - Council Tax Band G

Council Tax

Council Tax Band G

Hamptons
7 Lower Sloane Street
Sloane Square, London, SW1W 8AH
020 7824 8242
sloanesquarelettings@hamptons.co.uk
www.hamptons.co.uk

{ AN ELEGANT TWO BEDROOM APARTMENT NEAR THE RIVER

The Property

An elegant two bedroom apartment located on the third floor (with lift) of a handsome redbrick period building offering 858 squared feet of lateral living space. Benefiting from wonderful views of the River Thames to the front and views of The Royal Hospital gardens to the rear. The apartment comprises two double bedrooms, two bathrooms, large reception room with river views, modern kitchen with built in appliances and plenty of storage throughout.

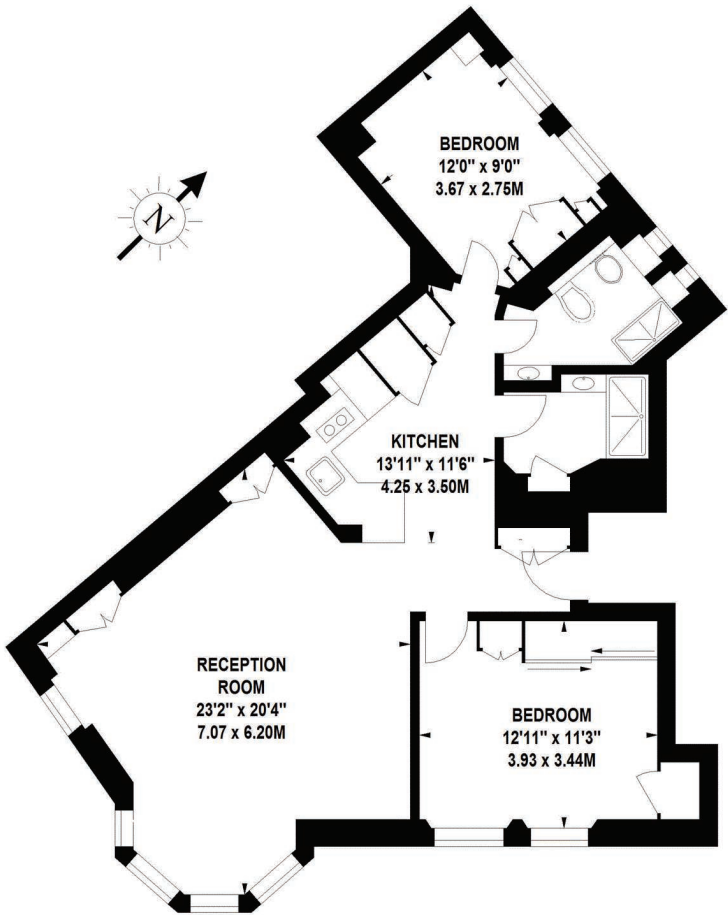
Location

Riverpark Court is a well run red brick mansion building with lift located on a pretty crescent moments from the River Thames. The transport links, shops and boutiques of Sloane Square are close by (0.7 miles away) offering Circle & District Lines.



Riverpark Court, SW3

Approximate gross internal area
858 sq ft / 79.71 sq m



Third Floor

Illustration For Identification Purposes Only. Not To Scale
*Floorplan Drawn According To RICS Guidelines
Copyright of FeaturePRO

For Clarification
We wish to inform prospective tenants that we have prepared these particulars as a general guide and they have been confirmed as accurate by the landlord. We have not verified permissions, nor carried out a survey, tested the services, appliances and specific fittings. Room sizes are approximate and measurement figures rounded: they are taken between internal wall surfaces and therefore include cupboards/shelves, etc. Accordingly, they should not be relied upon for

carpets and furnishings. It should also be noted that all fixtures and fittings, carpeted, curtains/blinds, kitchen equipment and garden statuary, whether fitted or not, are deemed removable by the landlord unless specifically itemised with these particulars. Please enquire in office or on our website for details on holding deposit and tenancy deposit figures.

