



{ CHESHAM PLACE LONDON SW1X  
£515 PER WEEK AVAILABLE 22/04/2024

Hamptons  
THE HOME EXPERTS

# { THE PARTICULARS

**Chesham Place London SW 1X**

**£515 Per Week  
Furnished**

 **1 Bathroom**  
 **1 Reception**

## Features

- Studio Apartment, - New Bathroom, -  
New separate kitchen, - Good storage, -  
Professionally managed, - Council Tax  
Band E

## Council Tax

Council Tax Band E

## Hamptons

7 Lower Sloane Street  
Sloane Square, London, SW1W 8AH  
020 7824 8242  
[sloanesquarelettings@hamptons.co.uk](mailto:sloanesquarelettings@hamptons.co.uk)  
[www.hamptons.co.uk](http://www.hamptons.co.uk)

# { A LARGE NEWLY REFURBISHED STUDIO APARTMENT IN BELGRAVIA

## The Property

A large newly refurbished studio apartment in this well maintained period conversion forming part of a well-run and professionally managed block; superbly located in-between Belgravia and Knightsbridge. The apartment offers a large studio room comprising excellent built in storage and double bed and a sofa, tv and dining area. There is a separate new kitchen and good size bathroom.

## Location

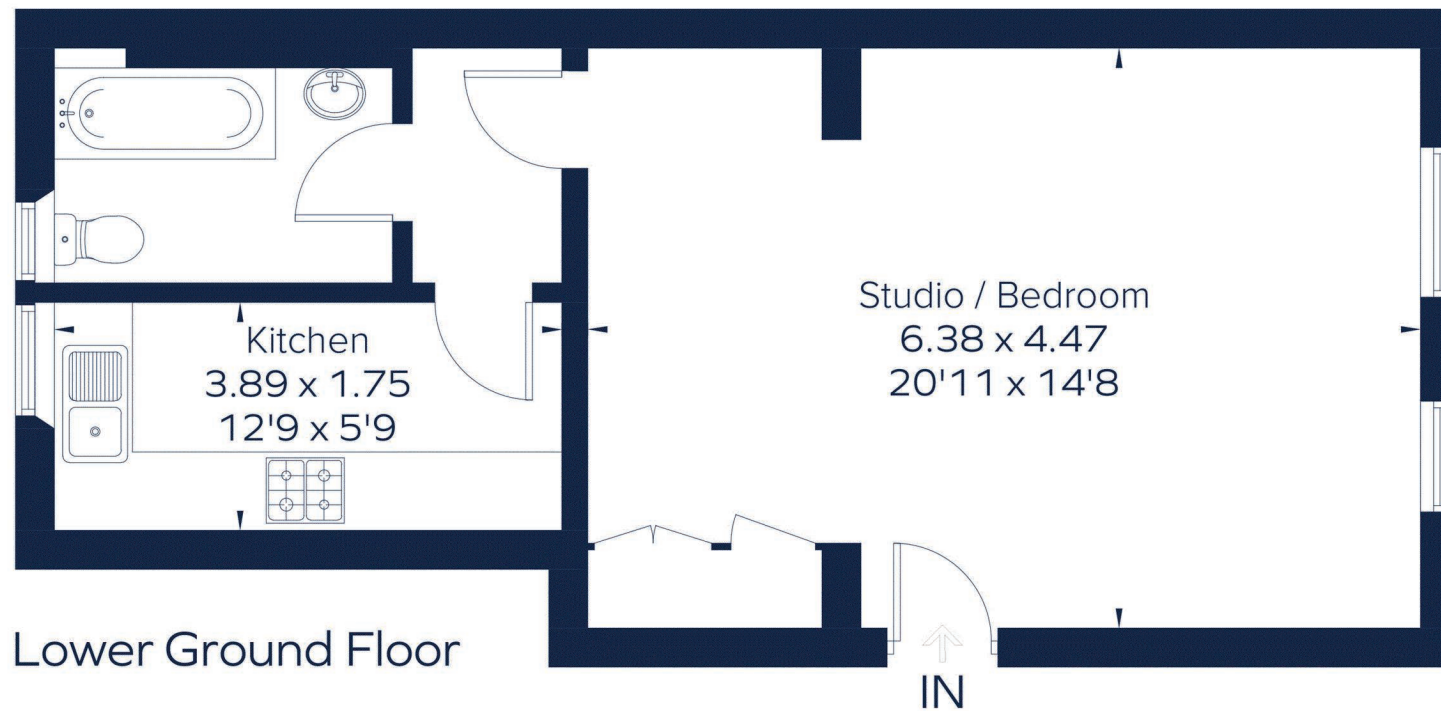
Chesham Place is a highly desirable Belgravia address, offering residents convenient access to both Knightsbridge and Sloane Square. The property is perfectly located close to sought after schools, and a wealth of world-renowned shops and restaurants.



# CHESHAM PLACE SUPPLIED

Approximate Gross Internal Area

470 sq. ft. (43.7 sq. m.)



Drawn for illustration and identification purposes only.  
ID 964812

## For Clarification

We wish to inform prospective tenants that we have prepared these particulars as a general guide and they have been confirmed as accurate by the landlord. We have not verified permissions, nor carried out a survey, tested the services, appliances and specific fittings. Room sizes are approximate and measurement figures rounded: they are taken between internal wall surfaces and therefore include cupboards/shelves, etc. Accordingly, they should not be relied upon for

carpets and furnishings. It should also be noted that all fixtures and fittings, carpeted, curtains/blinds, kitchen equipment and garden statuary, whether fitted or not, are deemed removable by the landlord unless specifically itemised with these particulars. Please enquire in office or on our website for details on holding deposit and tenancy deposit figures.

