



**CAMBRIDGE PARK TWICKENHAM TW1 EPC C**  
**£3,250 PER MONTH** AVAILABLE 17/08/2024




**Hamptons**

THE HOME EXPERTS

# { THE PARTICULARS

Cambridge Park Twickenham TW1  
EPC C

**£3,250 Per Month**  
**Unfurnished**

 **2 Bedrooms**  
 **2 Bathrooms**  
 **1 Reception**

## Features

- 2 bedrooms, - 2 bathrooms, - Reception room, - Kitchen, - 2 private terraces, - Allocated off-street parking, - Bicycle storage

## Council Tax

Council Tax Band E

## Hamptons

8 The Quadrant  
Richmond, TW9 1BP  
020 8940 1199  
RichmondLettings@hamptons-int.com  
www.hamptons.co.uk

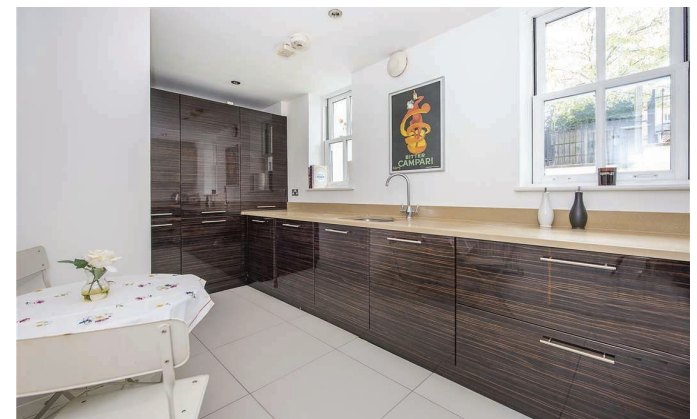
# { A FANTASTIC TWO BEDROOM APARTMENT LOCATED IN EAST TWICKENHAM

## The Property

Set within an imposing detached period property in substantial grounds, the property has recently been redecorated and re-carpeted throughout. The accommodation comprises a large reception room with space for dining that opens onto a private terrace, modern kitchen, principal bedroom suite that opens onto a further private terrace, second double bedroom and a second bathroom. The property further benefits from an allocated parking space and bicycle storage.

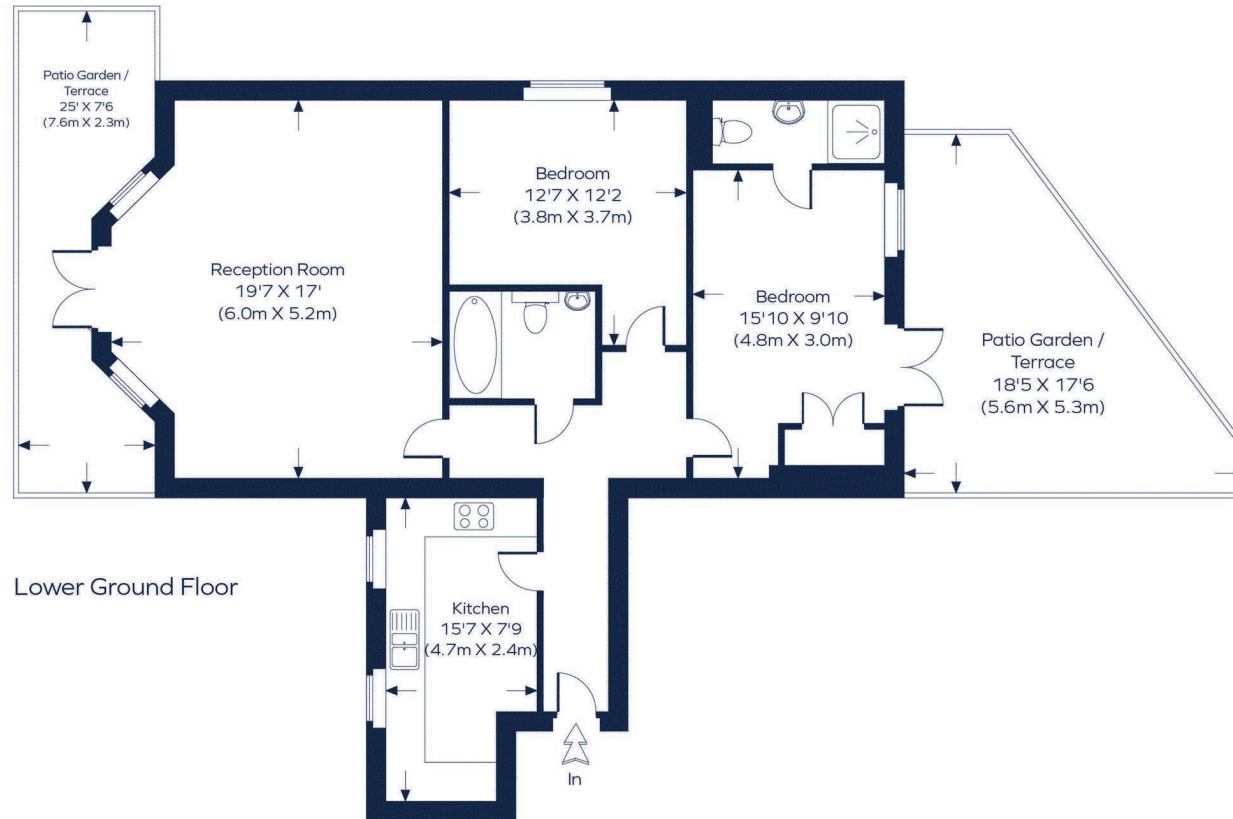
## Location

The property is situated in the highly sought after area of Cambridge Park, close to the open spaces of the historic Marble Hill Park. Both St Margarets and Richmond Town Centre are close by offering transport links into Central London. .



# HATFIELD HOUSE

Approximate Gross Internal Area  
Total = 904 sq. ft. (84.0 sq. m.)



This plan is for layout guidance only. Not drawn to scale unless stated. Windows and door openings are approximate. Whilst every care is taken in the preparation of this plan, please check all dimensions, shapes and compass bearings before making any decisions reliant upon them.  
ID 863885

## For Clarification

We wish to inform prospective tenants that we have prepared these particulars as a general guide and they have been confirmed as accurate by the landlord. We have not verified permissions, nor carried out a survey, tested the services, appliances and specific fittings. Room sizes are approximate and measurement figures rounded: they are taken between internal wall surfaces and therefore include cupboards/shelves, etc. Accordingly, they should not be relied upon for

carpets and furnishings. It should also be noted that all fixtures and fittings, carpeted, curtains/blinds, kitchen equipment and garden statuary, whether fitted or not, are deemed removable by the landlord unless specifically itemised with these particulars. Please enquire in office or on our website for details on holding deposit and tenancy deposit figures.

