






{ 6-8 CHARLES CLOWES WALK, NINE ELMS,
£1,080 PER WEEK AVAILABLE 21/01/2025

Hamptons
THE HOME EXPERTS

{ THE PARTICULARS

6-8 Charles Clowes Walk, Nine
Elms, London SW11 7AG

£1,080 Per Week
Furnished

 2 Bedrooms
 2 Bathrooms
 1 Reception

Features

- Concierge/ Building Manager, - Residents
Gym / Spa, - Residents Cinema Room, -
Fully Furnished, - Smart (Samsung) TV, -
Alexa (Amazon) functionality, -
Broadband/ data inclusive

Council Tax

Council Tax Band F

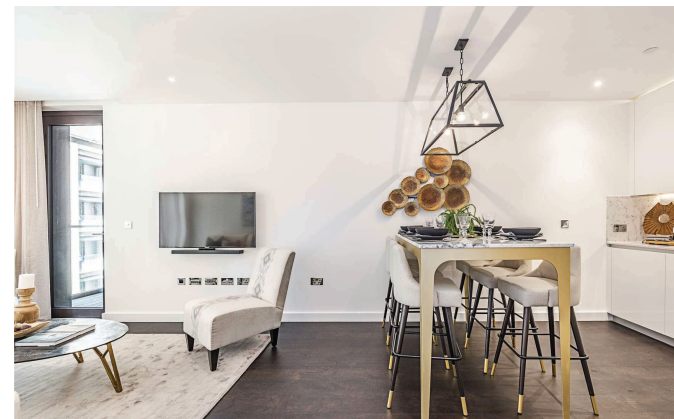
Hamptons
50 Belgrave Road
London, SW1V 1RQ
020 7834 7316
pimlettingsoffice@hamptons.co.uk
www.hamptons.co.uk

The Property

An impressive interior designed two-bedroom, two-bathroom apartment located in Thornes House forming part of The Residence Collection in Nine Elms on London's iconic South Bank. This luxury apartment is situated on the 5th floor of this prestigious building which features a 24-hour manned concierge along with a dedicated building manager, lift service, gym, media room, board room and secure underground parking. The apartment comprises a spacious reception room complete with Samsung Smart TV's with Bose sound bars incorporating a built in Amazon Alexa to control the apartments lighting, TV and heating systems along with a private winter garden creating a further living area. The reception room is open plan with a fully fitted kitchen featuring integrated AEG appliances with floor to ceiling windows providing far reaching views across London. The apartment offers two double-bedrooms, two-bathrooms, one of which is an en-suite bathroom from the master bedroom. The apartment also benefits from ample storage space.

Location

Thornes House is ideally positioned between two new Northern Line underground stations (2 minutes and 45 seconds away from Nine Elms station) adding to the extensive transport links including tree lined footpaths, dedicated cycle lanes, Clipper river service, local buses and the Pimlico bridge providing direct access into the neighbouring Royal Borough's of Kensington and Chelsea.



No floor plan currently available

For Clarification
We wish to inform prospective tenants that we have prepared these particulars as a general guide and they have been confirmed as accurate by the landlord. We have not verified permissions, nor carried out a survey, tested the services, appliances and specific fittings. Room sizes are approximate and measurement figures rounded: they are taken between internal wall surfaces and therefore include cupboards/shelves, etc. Accordingly, they should not be relied upon for

carpets and furnishings. It should also be noted that all fixtures and fittings, carpeted, curtains/blinds, kitchen equipment and garden statuary, whether fitted or not, are deemed removable by the landlord unless specifically itemised with these particulars. Please enquire in office or on our website for details on holding deposit and tenancy deposit figures.

