

Mike
Dobson



10 East View

Kippax, Leeds, LS25 7HB

£165,000

10 East View

Nestled in the charming area of East View, Kippax, Leeds, this delightful mid-terrace house offers a perfect blend of comfort and practicality. With two generously sized double bedrooms, this property is ideal for small families, couples, or individuals seeking extra space.

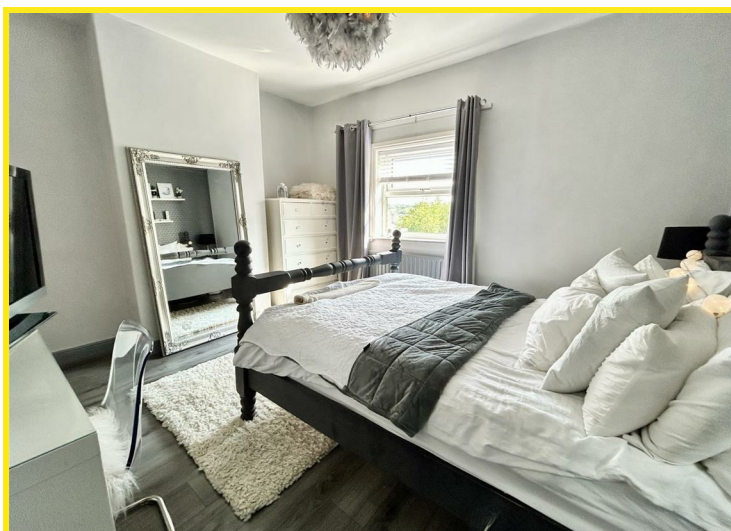
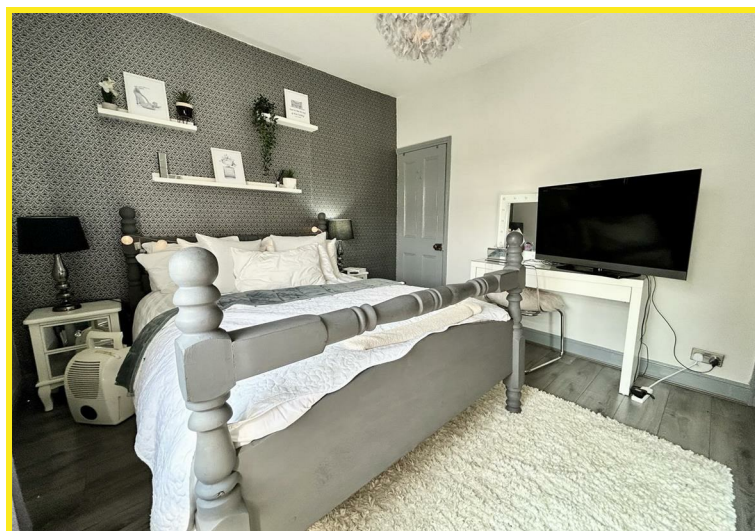
Upon entering, you are welcomed into a cosy lounge that flows seamlessly into a spacious dining room, creating an inviting atmosphere for both relaxation and entertaining which leads to the fitted kitchen. The property benefits from PVCu double glazing, ensuring warmth and energy efficiency throughout the year, while the gas central heating, powered by a modern combination boiler, provides reliable comfort during the colder months.

The white bathroom suite is both stylish and functional, catering to your everyday needs. Additionally, the useful cellar offers extra storage space, perfect for keeping your home clutter-free.

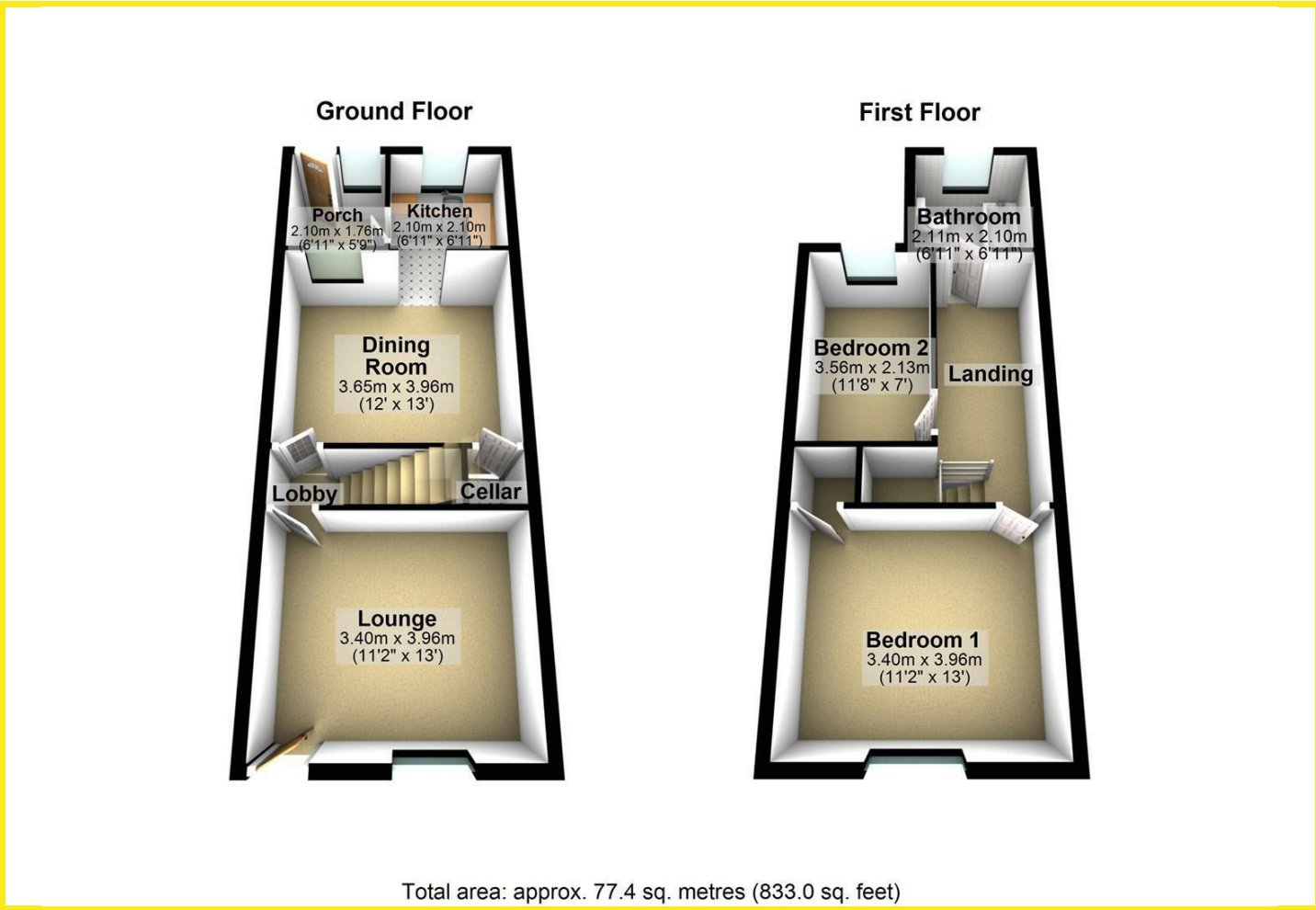
Outside, you will find an enclosed yard, providing a private outdoor area for enjoying the fresh air or hosting gatherings. There is also an outside store, adding further convenience for your gardening tools or outdoor equipment.

This property is not only a lovely home but also a fantastic opportunity to enjoy the vibrant community of Kippax, with its local amenities and transport links. Whether you are looking to settle down or invest, this mid-terrace house is a must-see.





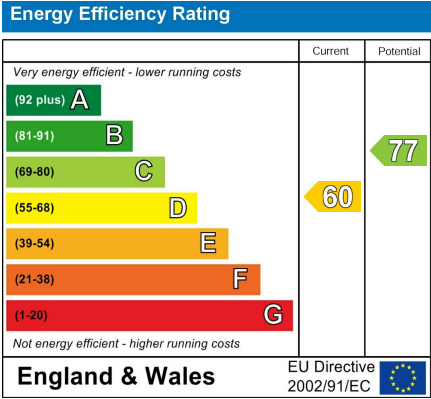
Floor Plan



Area Map



Energy Efficiency Graph



Directions

From our Kippax office turn left at the mini-roundabout, take the second exit right on to Leeds Road, second right on to Church Lane, immediate left on to Robinson Lane, taking the second left on to East View where the property can be found on the right hand side.

These particulars, whilst believed to be accurate are set out as a general outline only for guidance and do not constitute any part of an offer or contract. Intending purchasers should not rely on them as statements of representation of fact, but must satisfy themselves by inspection or otherwise as to their accuracy. No person in this firms employment has the authority to make or give any representation or warranty in respect of the property.