

Mike
Dobson



40 Tatefield Place

Kippax, Leeds, LS25 7JZ

£175,000

40 Tatefield Place

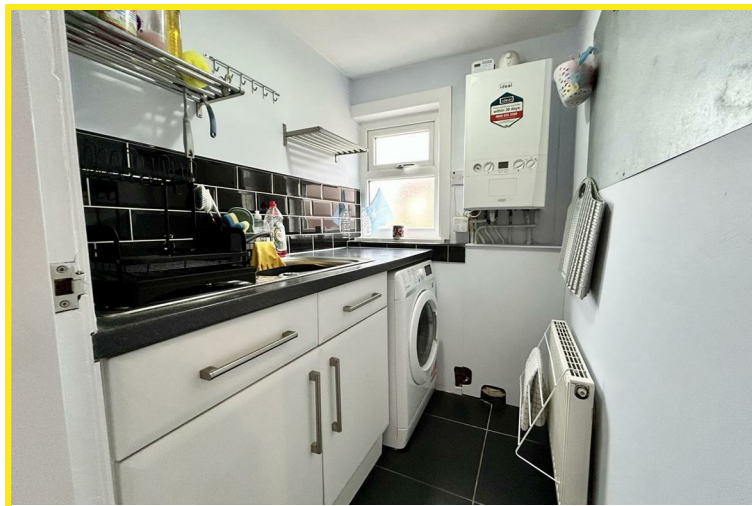
Nestled in the charming area of Tatefield Place, Kippax, Leeds, this delightful terraced house offers a perfect blend of comfort and modern living. With two well-proportioned double bedrooms, this property is ideal for small families, couples, or individuals seeking a cosy home.

Upon entering, you are welcomed into a spacious reception room that features a charming multi fuel stove, creating a warm and inviting atmosphere, perfect for relaxing evenings. The fitted kitchen is equipped with a built-in oven, hob, extractor, and an integrated fridge/freezer, making it a practical space for culinary enthusiasts.

The property benefits from gas central heating, with a combination boiler conveniently housed in a separate utility room, ensuring warmth and efficiency throughout the colder months. The PVCu double glazing enhances energy efficiency while providing a peaceful environment.

Step outside to discover an enclosed rear lawned garden, a lovely space for outdoor activities or simply enjoying the fresh air. Additionally, the property boasts a detached garage and an outside store, offering ample storage solutions for your belongings.

This charming home in Kippax is not only well-appointed but also conveniently located, providing easy access to local amenities and transport links. It presents an excellent opportunity for those looking to settle in a friendly community. Don't miss the chance to make this lovely house your new home.

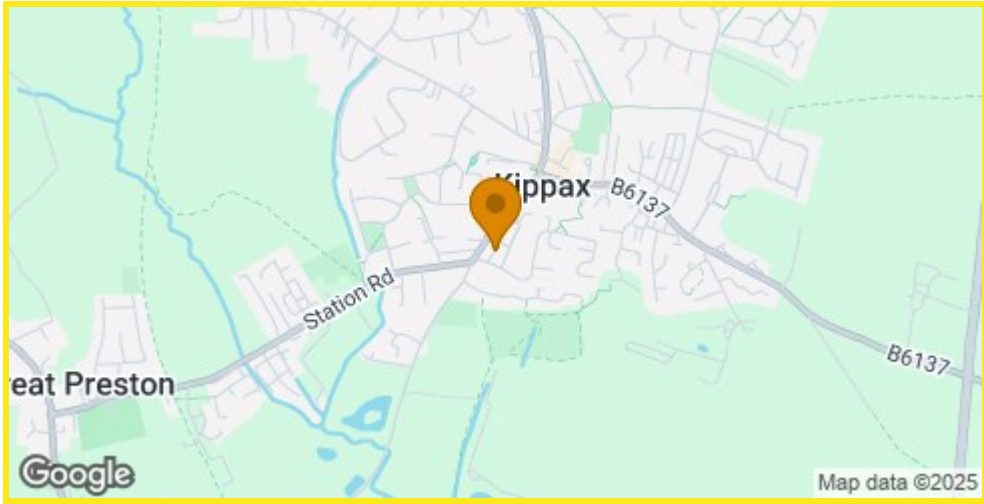




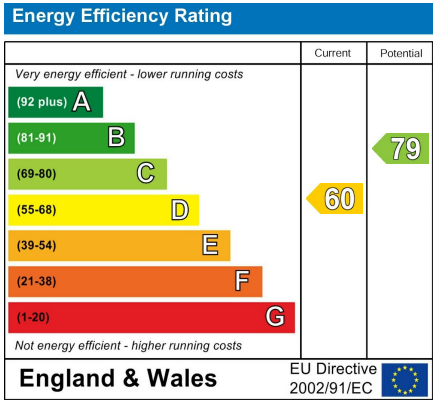
Floor Plan



Area Map



Energy Efficiency Graph



Directions

From our Kippax office turn left to the mini roundabout taking the first exit left down Butt Hill, take the first turning right onto Tatefield Grove follow the road round where the property can be found on the right hand side as indicated by the agents board.

These particulars, whilst believed to be accurate are set out as a general outline only for guidance and do not constitute any part of an offer or contract. Intending purchasers should not rely on them as statements of representation of fact, but must satisfy themselves by inspection or otherwise as to their accuracy. No person in this firms employment has the authority to make or give any representation or warranty in respect of the property.