

Mike
Dobson



48 New Street

Kippax, Leeds, LS25 7BE

£160,000

48 New Street

Nestled in the charming area of Kippax, Leeds, this delightful terraced house on New Street presents an excellent opportunity for both first-time buyers and investors alike. With no onward chain, you can move in without delay and start enjoying your new home.

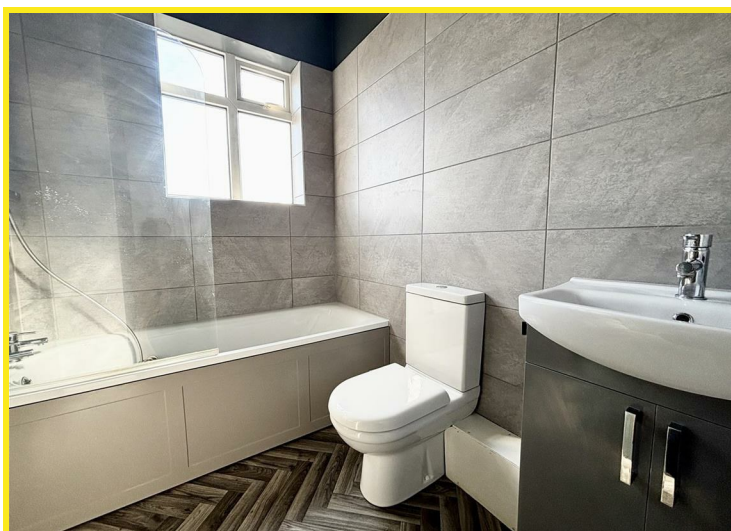
As you enter the property, you are welcomed into the lounge with a wood burner, perfect for relaxing or entertaining guests. The fitted kitchen is equipped with an electric oven and a four-ring gas hob, making it a joy to prepare meals. There are two comfortable bedrooms, providing ample space for a small family or for those who desire a guest room or home office. The bathroom features a contemporary three-piece white suite, ensuring a fresh and clean aesthetic.

In addition, the property has PVCu double glazed windows and a Glow-worm combination boiler, located in the kitchen. Outside, the private and enclosed rear garden is mainly paved, offering a low-maintenance outdoor space ideal for enjoying the sunshine.

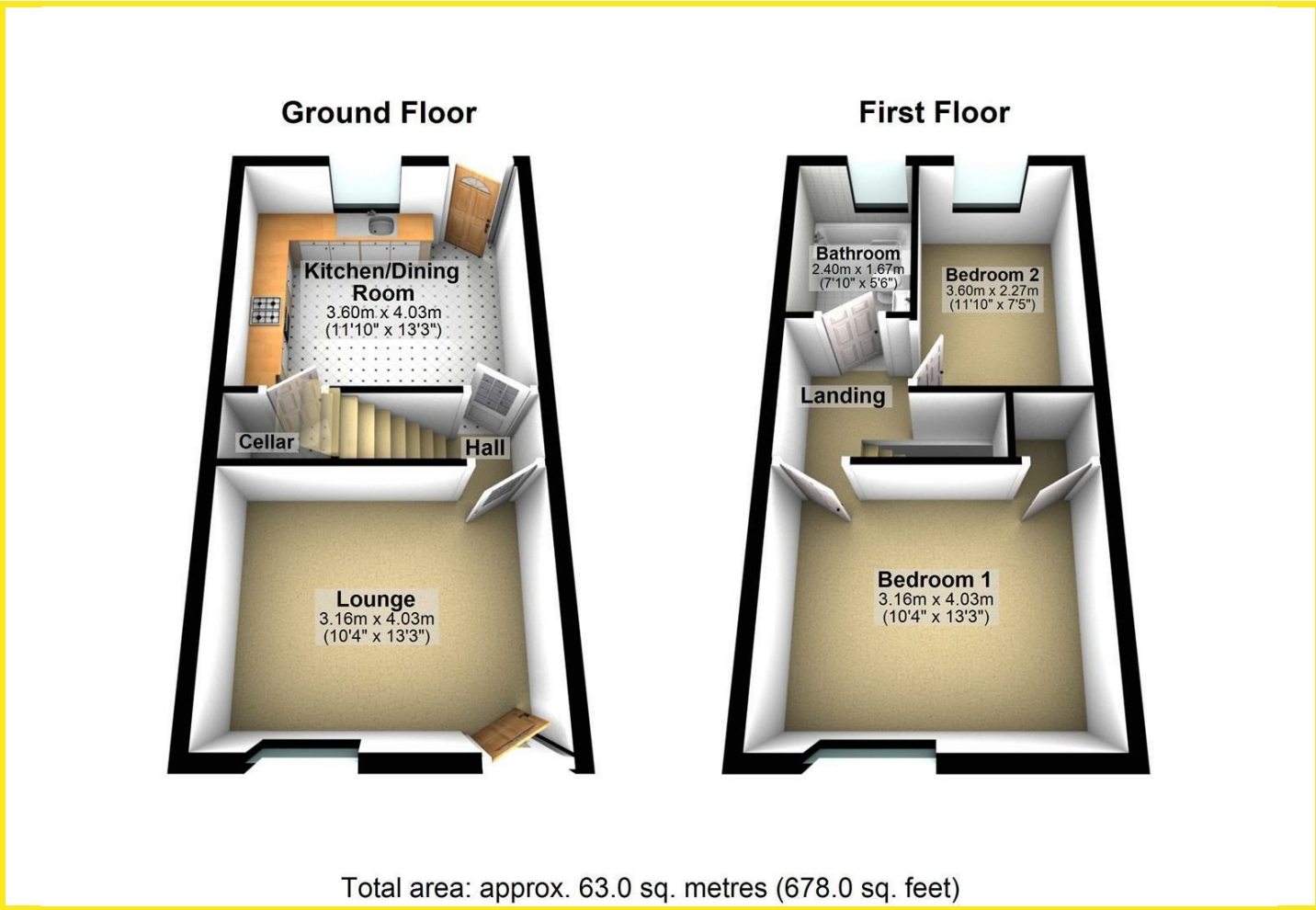
This home is situated in an ideal location, with local shops, schools, and public transport links just a stone's throw away. Whether you are commuting to work or simply enjoying the local amenities, everything you need is within easy reach.

In summary, this terraced house on New Street is a wonderful opportunity to secure a comfortable and convenient home in Kippax. Don't miss your chance to view this property and envision your future in this lovely area.





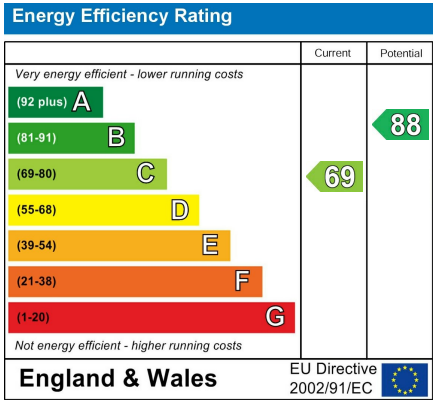
Floor Plan



Area Map



Energy Efficiency Graph



Directions

From our Kippax office turn right up High Street, take the fourth turning left onto Gibson Lane, first left and then right onto New Street where the property can be found on the right hand side.