

Mike
Dobson



2 Top House Farm Mews
Fairburn, Knottingley, WF11 9NX

£265,000

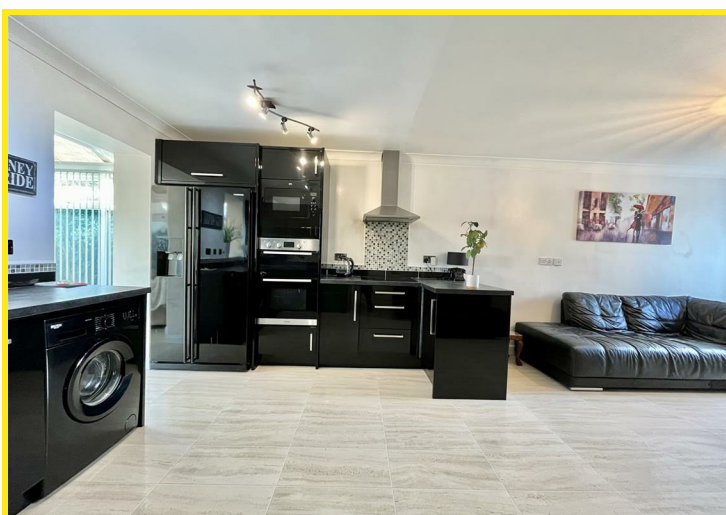
2 Top House Farm Mews

Being sold with no onward chain is an extremely well presented three bedroom semi-detached house located on a corner plot and within the village of Fairburn.

The ready to move into accommodation briefly comprises entrance hall, lounge/kitchen, dining room, conservatory, first floor landing, bedroom one, bedroom two, bedroom three, and bathroom/W.C.

In addition the property has PVCu double glazed windows throughout, Wooden French doors from the dining room and PVCu French doors in the conservatory leading out in to the rear garden, composite front entrance door, gas fired central heating with brand new combination boiler fitted within the last few months, stunning modern black high gloss kitchen with four ring hob, extractor above, built in double oven & microwave, integrated dishwasher, space for American style fridge/freezer and plumbing for washing machine, ample built in storage to the dining room, loft being partly boarded and fitted wardrobes to all bedrooms.

Externally, to the front of the property is a paved garden. A tarmac driveway provides off road parking. To the rear of the property is a fully enclosed low maintenance paved garden with external lighting and water tap. There is the added benefit of a brick built storage space which is ideal if you work from home!





Floor Plan

