



**NET**  
**LETTINGS**  
**.COM**

## Flat 1, Nijjer House, Commercial Road

London, E1 2JT

£1,750 pcm Fees Apply

- Secure Private Development
- Open-Plan Kitchen/Lounge
- Modern Neutral Decor
- Balcony





## Property Description

%full\_description\_title[b,br,#0a3646]\_dim[ij]%

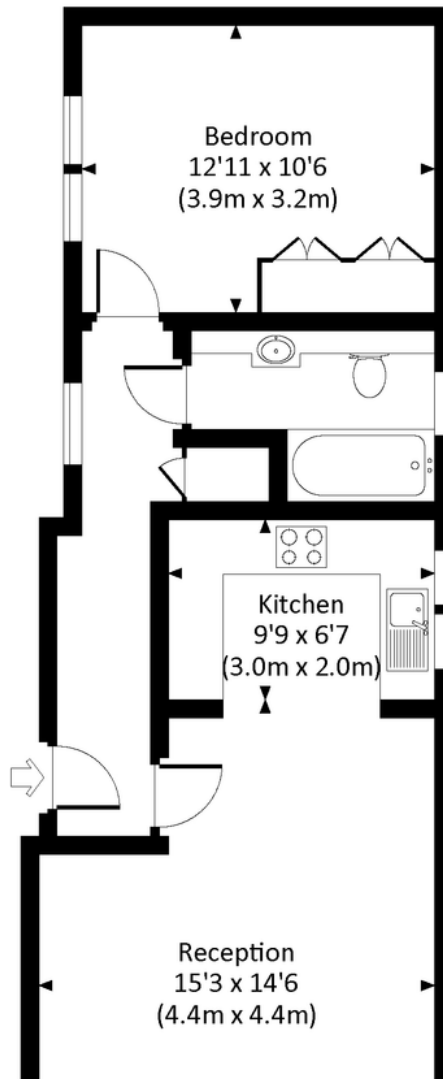






# NIJER HOUSE, COMMERCIAL ROAD, E1

Approx. gross internal area  
541 Sq Ft. / 50.3 Sq M.



## Viewings

By Appointment only

## Council Tax Band

Band C

## Local Authority

Tower Hamlets London Borough Council

## Energy Efficiency Rating

	Current	Potential
Very energy efficient - lower running costs		
(92-100) <b>A</b>		
(81-91) <b>B</b>	82	82
(69-80) <b>C</b>		
(55-68) <b>D</b>		
(39-54) <b>E</b>		

## Registered Office

Suite C, 36-40 Copperfield Road, London,  
E3 4RR /08050057

Find us on   

[www.netlettings.com](http://www.netlettings.com)

[management@netlettings.com](mailto:management@netlettings.com)

020 8981 5551

[mydeposits.co.uk](http://mydeposits.co.uk)



**rightmove**  
find your happy

**Zoopla.co.uk**  **PrimeLocation**



Agents Note: Whilst every care has been taken to prepare these particulars, they are for guidance purposes only. All measurements are approximate and for general guidance purposes only and whilst every care has been taken to ensure their accuracy, they should not be relied upon and potential tenants are advised to recheck the measurements.