



Enclosed in this brochure, you will discover the details of a new property listing, proudly presented by Net Lettings



Gallery Apartments, 331 Commercial Road, London, E1 2PS

## Two-Bedroom Apartment

£2,450 per calendar month

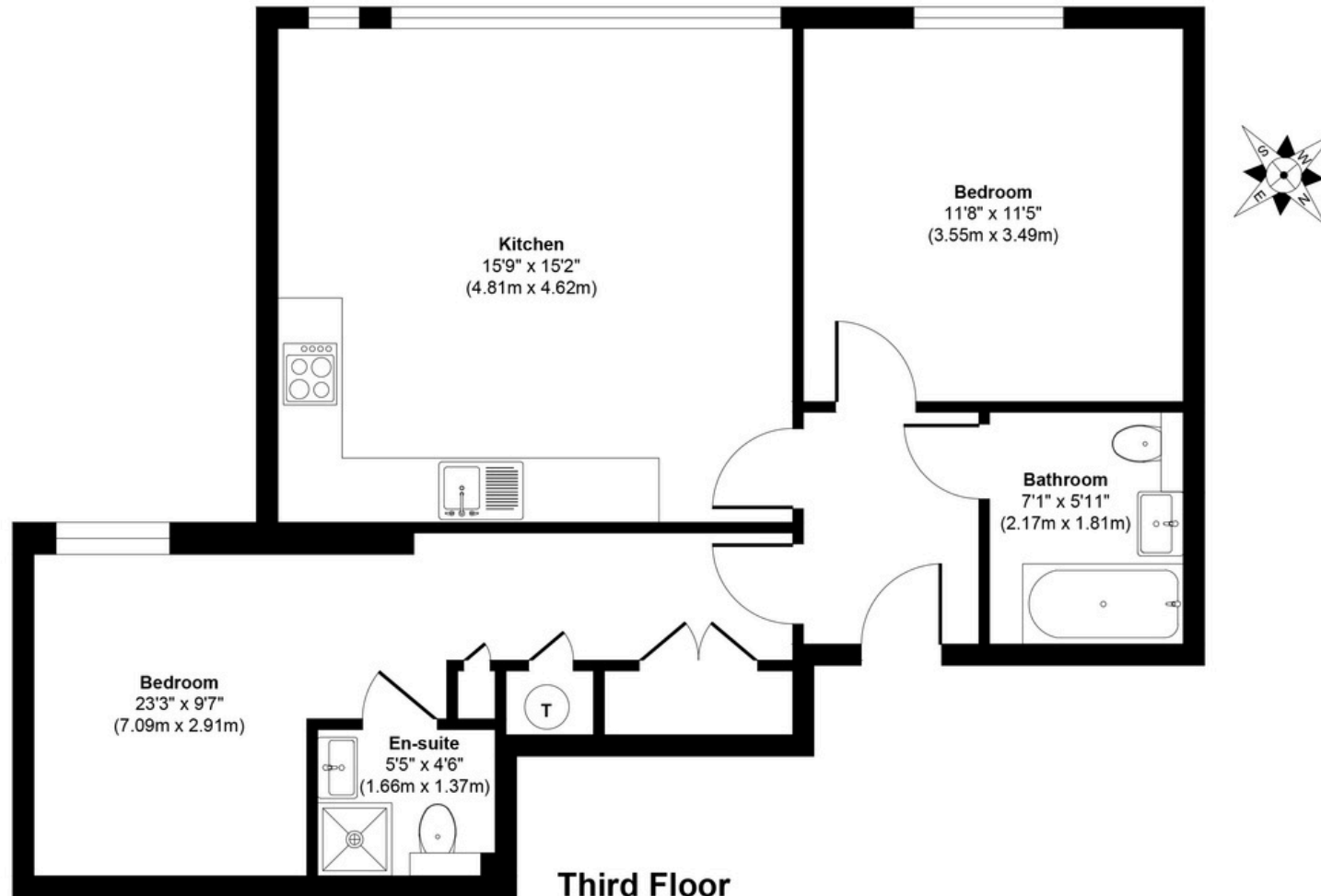
Net Lettings is delighted to offer this spacious two-bedroom apartment, situated a short from Whitechapel Underground and Shadwell DLR. This two-bedroom, two-bathroom apartment boasts impressive high ceilings, large windows and a generous size throughout.

- Private Development
- Open plan kitchen/living room
- Modern Neutral Decor
- Furnished
- Secure Entry

Viewings by appointment only  
[info@netlettings.com](mailto:info@netlettings.com)  
0208 981 5551



# Commercial Road Flat 6



**Third Floor**  
**Approximate Floor Area**  
**671 sq. ft**  
**(62.36 sq. m)**

**Approx. Gross Internal Floor Area 671 sq. ft / 62.36 sq. m**

Illustration for identification purposes only, measurements are approximate, not to scale.

Produced by Elements Property

## Location & Transport

Whitechapel is renowned for its excellent transport links, including the Whitechapel station, which serves both the London Underground (District and Hammersmith & City lines) and the London Overground, as well as the recently introduced Elizabeth Line. These connections make it incredibly convenient for residents to commute to key destinations such as the City of London, Canary Wharf, and beyond.

The area boasts a wide array of amenities, from eclectic markets and independent shops to contemporary cafes and renowned restaurants. The famous Whitechapel Gallery, a hub for contemporary art, draws visitors from across the city and beyond. Additionally, Whitechapel's rich history is palpable, with landmarks such as the Royal London Hospital and the vibrant Brick Lane nearby, known for its street art, food markets, and trendy boutiques.

 Shadwell DLR Station – 7 mins walk

 Whitechapel Station – 13 mins walk

Liverpool Street; 16 via Public Transport





For more information or to arrange a viewing,  
please get in touch with us at:

Phone: 0208 981 5551

Email: [info@netlettings.com](mailto:info@netlettings.com)

311 Commercial Road, London, E1 2PS

We aim to make our particulars both accurate and reliable. However, they are not guaranteed; nor do they form part of an offer or contract. If you require clarification on any points then please contact us, especially if you're travelling some distance to view. Please note that appliances and heating systems have not been tested, and therefore no warranties can be given as to their good working order.