



Tara Apartments, Commercial Road

London, E1 1NL

£1,500 pcm

- Ultra Chic Private Development
- Open-Plan Kitchen/Lounge
- Double Bedroom With Fitted Wardrobes
- Wood Floors
- Dishwasher
- Excellent Transport Links



1



1



1

Property Description

A fantastic one bedroom apartment located in the highly popular area of Whitechapel.

Situated in this modern private block, the flat comprises of an open-plan living space with a fully fitted modern kitchen together with all mod cons, a well proportioned double bedroom, with double bed and fitted wardrobes and a good sized bathroom with shower over bath. Offering a modern neutral decor throughout, wood floors, gas central heating and coming furnished to an excellent standard, this flat is ideal for the city professional.

The accommodation is set within a residential setting with swift links to the City and Docklands.

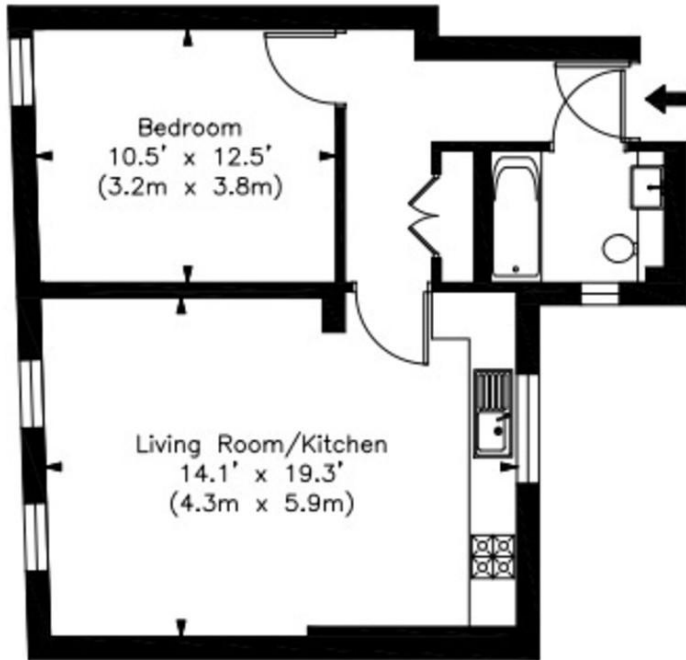
The closest underground stations are Whitechapel (District, Hammersmith & City and East London lines) and Shadwell (East London line and Docklands Light Railway). While for motorists there is easy access to the A13 for routes out of London to the East.



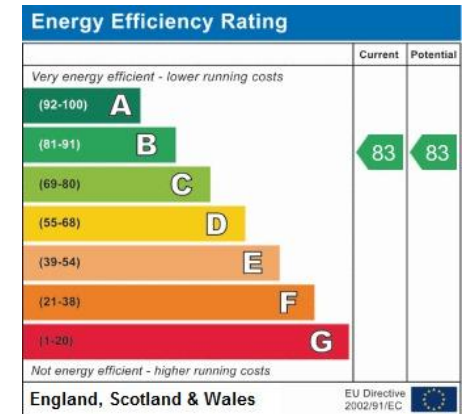


Tara Apartments, Commercial Road, London, E1

Approximate Gross Internal Area:
50 Sq M. / 538 Sq Ft.



Note: This floor plan is to be used for illustrative purposes only and all measurements given are approximate.



Find us on

mydeposits.co.uk



rightmove find your happy

Zoopla.co.uk

PrimeLocation



Registered Office

311 Commercial Road, London,
E3 4RR /08050057

www.netlettings.com
management@netlettings.com
020 8981 5551

Agents Note: Whilst every care has been taken to prepare these particulars, they are for guidance purposes only. All measurements are approximate are for general guidance purposes only and whilst every care has been taken to ensure their accuracy, they should not be relied upon and potential tenants are advised to recheck the measurements.