



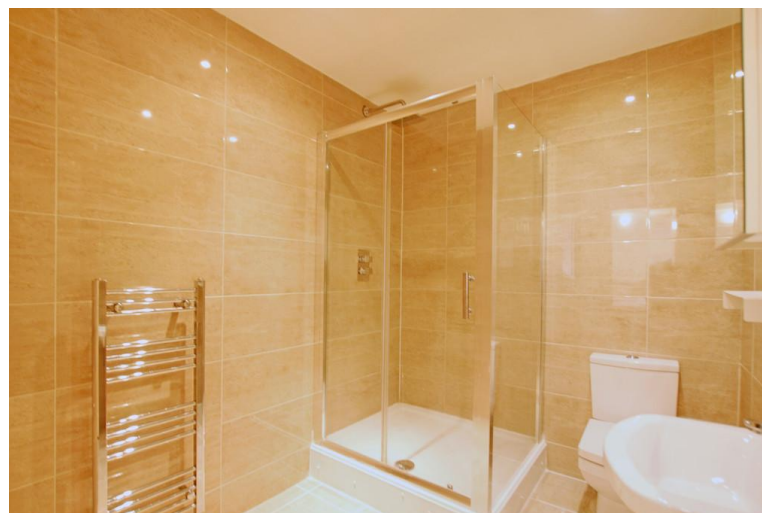
**NET**  
**LETTINGS**  
**.COM**

Flat 1b, 7 Barnett Street, Whitechapel, London, E1  
2FE

- Inclusive of Water, Electricity, Gas & Council tax
- Kitchen
- Shower suite
- Open-Plan living space

£1,500 pcm

 1  0  1



## Viewings

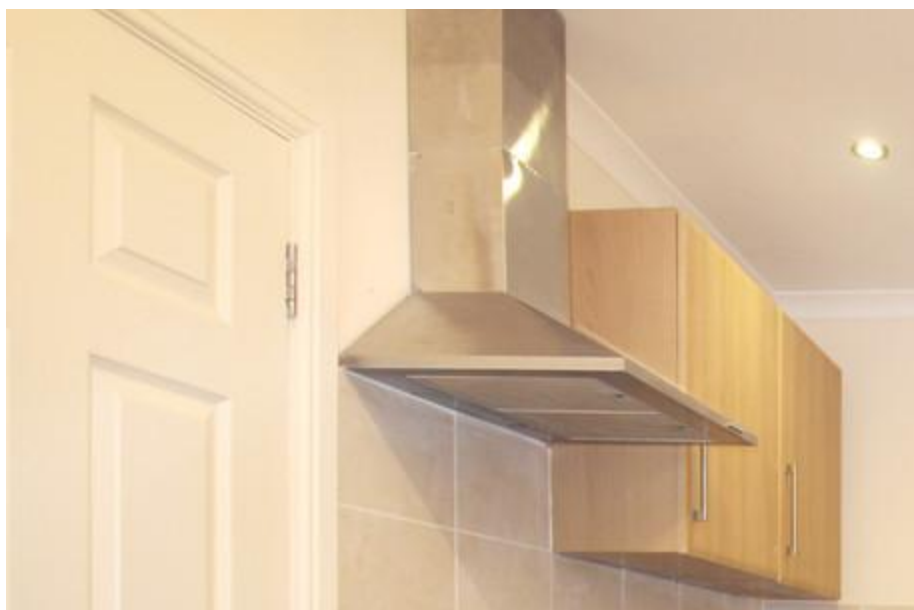
By Appointment only

**Council Tax Band**

Band %councilTaxBand%

**Local Authority**

%localAuthority%



### Registered Office

311 Commercial Road, London, E1 2PS  
/08050057

Find us on   

[www.netlettings.com](http://www.netlettings.com)

%office\_emailAddress\_rl%

%office\_contactNumber\_rl%

[mydeposits.co.uk](http://mydeposits.co.uk)



**rightmove**   
find your happy

**Zoopla.co.uk**  **PrimeLocation**



Agents Note: Whilst every care has been taken to prepare these particulars, they are for guidance purposes only. All measurements are approximate and are for general guidance purposes only and whilst every care has been taken to ensure their accuracy, they should not be relied upon and potential tenants are advised to recheck the measurements.