

BONDS *of* THORNBURY

INDEPENDENT ESTATE AGENTS

Proprietor: Rowena Moncrieffe
Tel No: 01454 858007



- SITUATED ON EDGE OF SOUGHT AFTER AREA
- DETACHED FAMILY HOME
- LARGE REAR GARDEN
- DOUBLE GARAGE AND PARKING
- LOUNGE/DINER
- KITCHEN

- CLOAKROOM
- FOUR BEDROOMS
- FAMILY BATHROOM
- EPC RATING 'C' COUNCIL TAX 'E' FREEHOLD

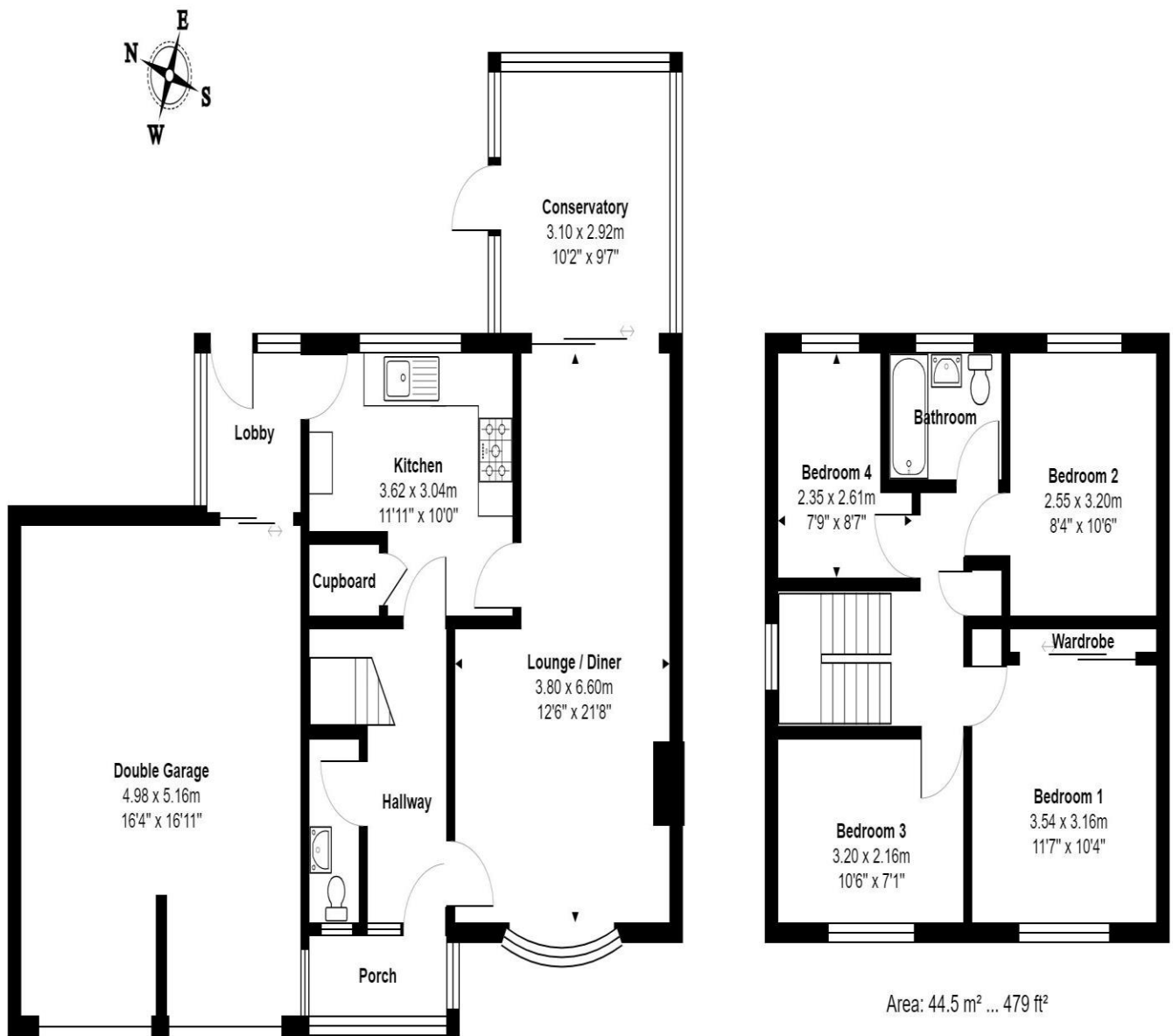


96 SWALLOW PARK
THORNBURY
BRISTOL
BS35 1LU

GUIDE PRICE £460,000

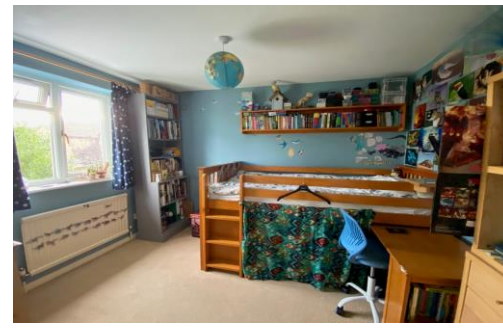
Situated on the edge of this popular established development is this family home with a larger than average garden and a Double Garage. The accommodation comprises lounge/diner, fitted kitchen, cloakroom, rear porch, four bedrooms, and family bathroom. EPC Rating 'C' Council Tax 'E' Freehold

THORNBURY With an estimated population of approximately 15,000, Thornbury has everything you might hope for in a town of this size. A pretty High Street has a variety of shops combining national names and local independent stores, and these extend through into a small shopping arcade. There are two supermarkets, a library, golf course, tennis courts and a large leisure centre with swimming and diving pools. Schooling is provided by five primary schools and Thornbury Castle School provides secondary education. There are also two schools specifically for those children with special needs. Thornbury also benefits from a number of great eateries, from pubs to cafes and cafes to fine dining restaurants.



Area: 88.0 m² ... 947 ft²

Area: 44.5 m² ... 479 ft²



PLEASE NOTE

Bonds of Thornbury have not tested any apparatus, fittings or services and so cannot verify that they are in working order. The buyer is advised to obtain verification from their solicitor or surveyor.

Before making a viewing on any of our properties please let us know if there are any material issues that would affect your decision to purchase any property.

All photographs are for information purposes only and contents are not included as part of the sale.



14 The Plain, Thornbury, Bristol. BS35 2BD
Email: enquiries@bondsofthornbury.co.uk
www.bondsofthornbury.co.uk

