



RESIDENTIAL SALES

44 Coombe Lane, London, SW20 0LA

T 0208 946 6511

raynespark@goodfellows.co.uk www.goodfellows.co.uk

Coombe Lane, Raynes Park, London



Our view...

A rare opportunity to purchase this stunning 2 double bedroom flat with a very large private terrace, communal roof garden, communal gym and allocated parking, all within the heart of Raynes Park, amongst an abundance of restaurants and cafes, the mainline station offers a frequent service to London Waterloo. Wimbledon Village and Common just a few minutes drive. This property is in excellent condition throughout and internal viewing is highly recommended. CHAIN FREE.

Offers in Excess Of £550,000
Leasehold

Overview...

- No Chain
- Parking
- Large Private Terrace
- Roof Garden
- Communal Gym
- Centre Of Raynes Park
- Transport Links
- Hi - Specification
- 2 Double Bedrooms

- RESIDENTIAL SALES
- RESIDENTIAL LETTINGS
- PROPERTY MANAGEMENT
- FINANCIAL SERVICES
- LAND AND NEW HOMES
- CONVEYANCING



Coombe Lane, Raynes Park, London

Communal Entrance

Security door into carpeted communal area, stairs and lift to all floors.

Entrance Hall

Video intercom, radiator, storage cupboard.

Kitchen / Dining Room

Kitchen area:

Selection of wall and base units with electric oven, induction hob and extractor fan, integrated fridge/freezer, integrated dishwasher.

Breakfast bar.

Dining area:

Windows and door onto a very large private terrace.

Bedroom One

Window onto private terraced, built in wardrobes, radiator.

En-suite Shower/WC

Modern shower unit, hand basin and WC. Extractor fan.

Bedroom Two

Window to private terrace, radiator.





Your view...



Bathroom

bath with shower over glass screen, hand basin, wc, towel rail.

Terrace

Large private terrace with views over Raynes Park, space for seating and plants pots.

Roof Garden

Communal roof terrace with benches and seating, large plant pots.

Communal Gym

accessed via a fob for residents only, selection of equipment.

Allocated Parking

allocated parking bay within Waitrose car park.

Spitfire House

Approximate Gross Internal Area = 65 sq m / 700 sq ft

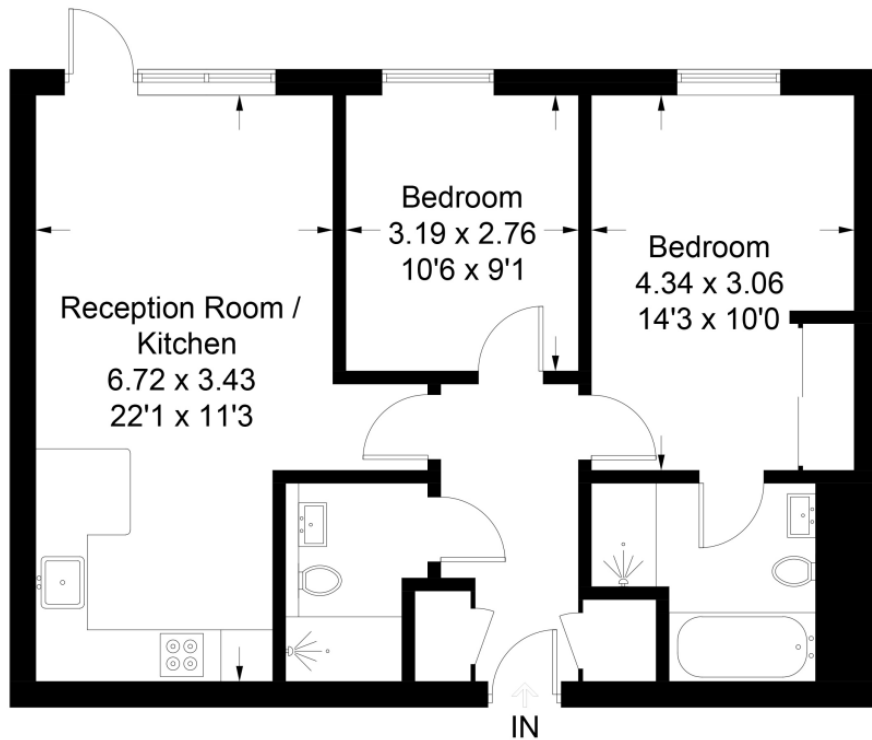


Illustration for identification purposes only, measurements are approximate, not to scale. floorplansUsketch.com © (ID476863)

Local Authority

Agents Notes

RESIDENTIAL SALES

44 Coombe Lane, London, SW20 0LA

T 0208 946 6511

raynespark@goodfellows.co.uk



For full EPC please contact the branch

www.goodfellows.co.uk