



Cromwell Road
Earls Court, SW5

CHESTERTONS





A fantastic one double bedroom apartment on the fifth floor of this well maintained portered building.

This apartment boasts an airy living room, separate kitchen, good size bedroom with fitted wardrobes, modern bathroom. The flat also benefits from an abundance of light throughout and 24 hour porter and lift.

****HOT WATER & HEATING COSTS INCLUDED IN RENT****

Located between Kensington, South Kensington and Earls Court, it benefits from the best amenities as well as three tube stations.

- 5th floor apartment with 24 hour porter and lift.
- Heating and hot water costs included in the rent.
- One bedroom apartment with separate reception room and kitchen.
- Located by both Gloucester Road and Earls Court tube stations.

£550 per week (£2,383.33 pcm)

Additional tenant charges apply (fees apply to non-AST tenancies only)

Tenancy Agreement Fee: £300

References per Tenant/Guarantor: £60

Inventory check (approx. £100 – £250 inc. VAT)

chestertons.co.uk/property-to-rent/applicable-fees

Energy Efficiency Rating		
Energy efficiency class - lower running costs	Current	Potential
90-100 A		
81-90 B		
71-80 C	80	80
61-70 D		
51-60 E		
41-50 F		
31-40 G		
Not energy efficient - higher running costs		
EU Directive 2002/91/EC		
England, Scotland & Wales		

Minimum Term: 6 months
Deposit Required: £2,750.00
Local Authority: Royal Borough of Kensington & Chelsea
Council Tax Band:
EPC Rating: C
Furnished

Chestertons South Kensington Lettings

44-48 Old Brompton Road
 South Kensington
 London
 SW7 3DY

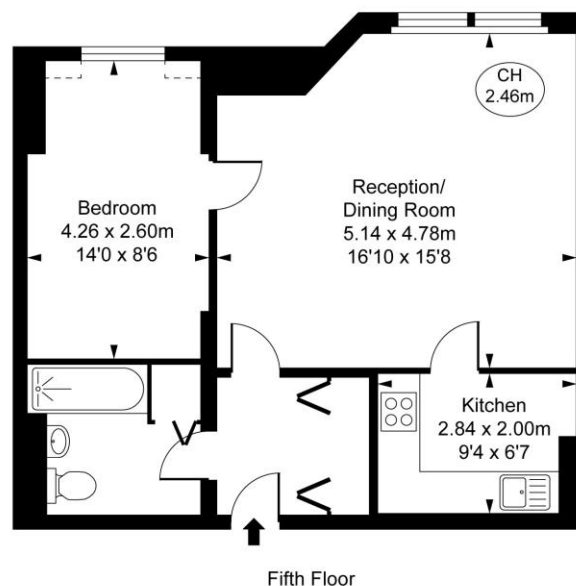
southkensington@chestertons.co.uk
 02075891244

Sherborne Court,
Cromwell Road,
Earls Court, SW5

Approximate Gross Internal Area
50.77 sq m / 546 sq ft

(Including restricted height
under 1.5m (-----))

(CH = Ceiling Heights)



This plan is not to scale. It is for guidance and not for valuation purposes.
All measurements and areas are approximate only, and have been prepared in accordance with the current edition of the RICS Code of Measuring Practice.
© Fulham Performance

Chesterton Global Ltd trading as Chestertons for themselves and for the vendor of this property whose agents they are, give notice that (i) these particulars do not constitute any part of an offer or contract, (ii) all statements contained within these particulars are made without responsibility on the part of Chestertons or the vendor, (iii) whilst made in good faith, none of the statements contained within these particulars are to be relied upon as a statement or representation of fact, (iv) any intending purchasers must satisfy themselves by inspection or otherwise as to the correctness of each of the statements contained within these particulars, (v) the vendor does not make or give either Chestertons or any person in their employment any authority to make or give representation or warranty whatsoever in relation to this property. Wide angle lenses may be used. ©Copyright Chestertons | Chesterton Global Ltd | Registered Office 40 Connaught Street, Hyde Park, London W2 2AB Registered Company Number 05334580.

