



Kempsford Gardens
Earls Court, SW5

CHESTERTONS





This property spacious bedroom with built in wardrobes and views over the neighbouring gardens, separate reception room, separate fitted kitchen and large bathroom suite. This apartment further benefits a modern yet contemporary feel.

- A modern and contemporary apartment
- Second floor period conversion apartment
- Over 550 square feet
- Close to Earls Court and West Brompton underground stations

£2,595 pcm

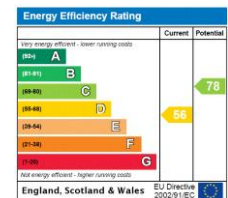
Additional tenant charges apply (fees apply to non-AST tenancies only)

Tenancy Agreement Fee: £300

References per Tenant/Guarantor: £60

Inventory check (approx. £100 – £250 inc. VAT)

chestertons.co.uk/property-to-rent/applicable-fees



Minimum Term: 6 months
Deposit Required: £2,595.00
Local Authority: Royal Borough of Kensington and Chelsea
Council Tax Band: D
EPC Rating: D
Unfurnished

Chestertons South Kensington Lettings

44-48 Old Brompton Road
 South Kensington
 London
 SW7 3DY

southkensingtonlettingsusers@chestertons.co.uk
 02075891244

Kempsford Gardens, SW5

Approximate gross internal area

577 sq ft / 53.60 sq m

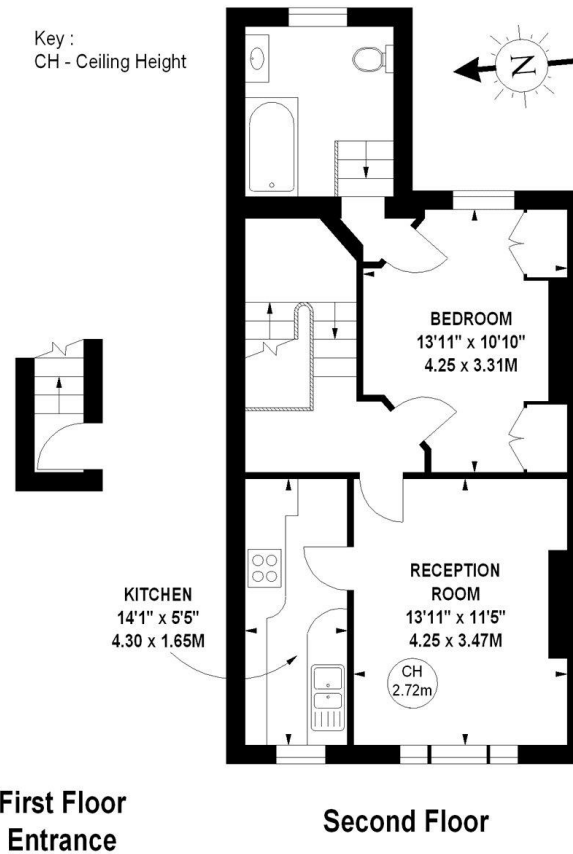


Illustration For Identification Purposes Only. Not To Scale

*Floorplan Drawn According To RICS Guidelines

Copyright of FeaturePRO

Chesterton UK Services Limited trading as Chestertons for themselves and for the vendor of this property whose agents they are, give notice that (i) these particulars do not constitute any part of an offer or contract, (ii) all statements contained within these particulars are made without responsibility on the part of Chestertons or the vendor, (iii) whilst made in good faith, none of the statements contained within these particulars are to be relied upon as a statement or representation of fact, (iv) any intending purchasers must satisfy themselves by inspection or otherwise as to the correctness of each of the statements contained within these particulars, (v) the vendor does not make or give either Chestertons or any person in their employment any authority to make or give representation or warranty whatsoever in relation to this property. Wide angle lenses may be used. ©Copyright Chestertons | Chesterton Global Ltd | Registered Office 40 Connaught Street, Hyde Park, London W2 2AB Registered Company Number 05334580.



This paper is
100% recyclable