



Bramham Gardens
South Kensington, SW5

CHESTERTONS





Located on the raised ground floor of a handsome period building in the highly sought-after Bramham Gardens, this stunning two-bedroom, two-bathroom apartment effortlessly combines classic charm with contemporary style.

- 2 Double Bedrooms with integrated storage
- 2 Stylish Bathrooms, including an en-suite
- Spacious Reception Room with wide sash windows and garden views
- Open-Plan Kitchen
- Private Tiled Garden with built-in seating

£6,500 pcm

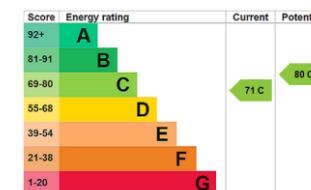
Additional tenant charges apply (fees apply to non-AST tenancies only)

Tenancy Agreement Fee: £300

References per Tenant/Guarantor: £60

Inventory check (approx. £100 – £250 inc. VAT)

chestertons.co.uk/property-to-rent/applicable-fees



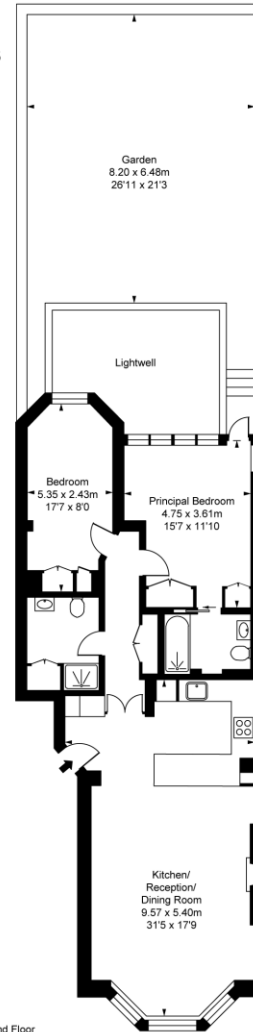
Minimum Term: 1 months
Deposit Required: £7,500.00
Local Authority: Kensington and Chelsea
Council Tax Band: G
EPC Rating: C
Furnished, Part Furnished, Unfurnished

Chestertons South Kensington Lettings

44-48 Old Brompton Road
 South Kensington
 London
 SW7 3DY

southkensingtonlettingsusers@chestertons.co.uk
 02075891244

Bramham Gardens, SW5
Approximate Gross Internal Area
89.36 sq m / 962 sq ft



ALL MEASUREMENTS AND AREA FIGURES SUPPLIED BY OTHERS, ACCURACY IS NOT GUARANTEED.
THIS PLAN MUST NOT BE REPRODUCED BY ANY OTHER PERSON WITHOUT PERMISSION

Chesterton UK Services Limited trading as Chestertons for themselves and for the vendor of this property whose agents they are, give notice that (i) these particulars do not constitute any part of an offer or contract, (ii) all statements contained within these particulars are made without responsibility on the part of Chestertons or the vendor, (iii) whilst made in good faith, none of the statements contained within these particulars are to be relied upon as a statement or representation of fact, (iv) any intending purchasers must satisfy themselves by inspection or otherwise as to the correctness of each of the statements contained within these particulars, (v) the vendor does not make or give either Chestertons or any person in their employment any authority to make or give representation or warranty whatsoever in relation to this property. Wide angle lenses may be used. ©Copyright Chestertons | Chesterton Global Ltd | Registered Office 40 Connaught Street, Hyde Park, London W2 2AB Registered Company Number 05334580.



This paper is
100% recyclable