



Stanhope Gardens  
South Kensington, SW7

CHESTERTONS









Short Let - A grand first floor one bedroom flat set over 748 sqft overlooking communal gardens on a sought square in the heart of South Kensington.

- Stunning first floor one bedroom
- Fully furnished
- Views over communal gardens
- Perfect location in the heart of South Kensington

### **£5,200 pcm**

Additional tenant charges apply (fees apply to non-AST tenancies only)

Tenancy Agreement Fee: £300

References per Tenant/Guarantor: £60

Inventory check (approx. £100 – £250 inc. VAT)

[chestertons.co.uk/property-to-rent/applicable-fees](https://www.chestertons.co.uk/property-to-rent/applicable-fees)

**Minimum Term:** 2 months  
**Deposit Required:** £3,600.00  
**Local Authority:** Kensington and Chelsea  
**EPC Rating:** To be confirmed  
**Furnished**

### ***Chestertons South Kensington Lettings***

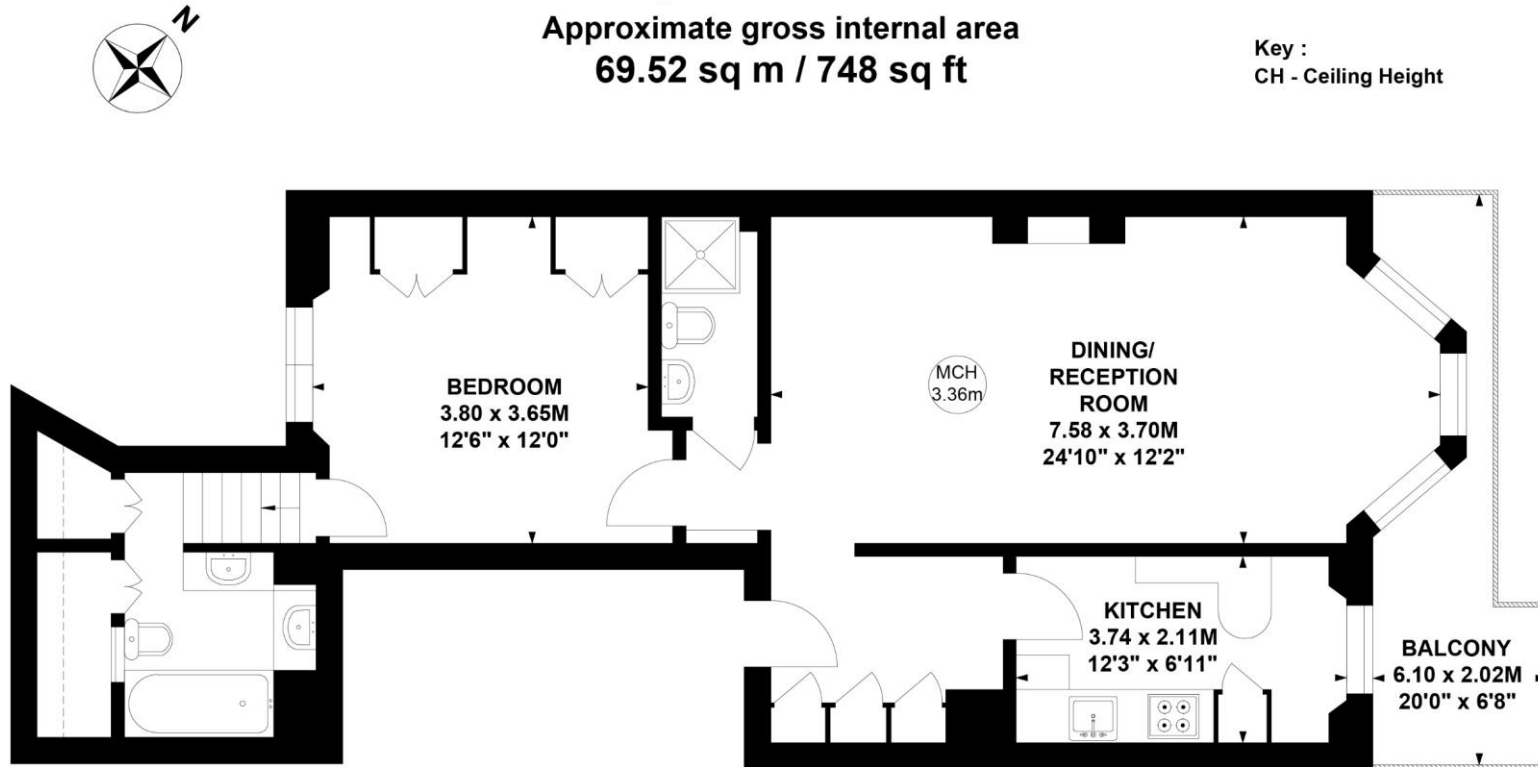
44-48 Old Brompton Road  
South Kensington  
London  
SW7 3DY

[southkensingtonlettingsusers@chestertons.co.uk](mailto:southkensingtonlettingsusers@chestertons.co.uk)  
02075891244

# Stanhope Gardens, SW7

Approximate gross internal area  
69.52 sq m / 748 sq ft

Key :  
CH - Ceiling Height



## First Floor

Not to scale, for guidance only and must not be relied upon as a statement of fact.

All measurements and areas are approximate only

Chesterton UK Services Limited trading as Chestertons for themselves and for the vendor of this property whose agents they are, give notice that (i) these particulars do not constitute any part of an offer or contract, (ii) all statements contained within these particulars are made without responsibility on the part of Chestertons or the vendor, (iii) whilst made in good faith, none of the statements contained within these particulars are to be relied upon as a statement or representation of fact, (iv) any intending purchasers must satisfy themselves by inspection or otherwise as to the correctness of each of the statements contained within these particulars, (v) the vendor does not make or give either Chestertons or any person in their employment any authority to make or give representation or warranty whatsoever in relation to this property. Wide angle lenses may be used. ©Copyright Chestertons | Chesterton Global Ltd | Registered Office 40 Connaught Street, Hyde Park, London W2 2AB Registered Company Number 05334580.



This paper is  
100% recyclable