

Coleherne Road, Earls Court, SW10



FARLEYS



A spacious raised ground floor studio flat with characteristic high ceilings, good sized garden to the back of the flat and separate eat-in kitchen and separate Bathroom.

Conveniently positioned for the shops, restaurants and transport links of Earls Court. EPC C.

Accommodation:

- Studio Room
- Kitchen area
- Separate Bathroom
- Garden

Council Tax Band C: £944.29 (2015/16)

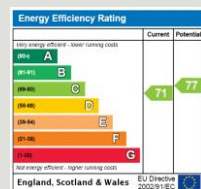
Local Authority: The Royal Borough of Kensington and Chelsea

Additional Tenant charges apply. Administration: £240 (VAT included)

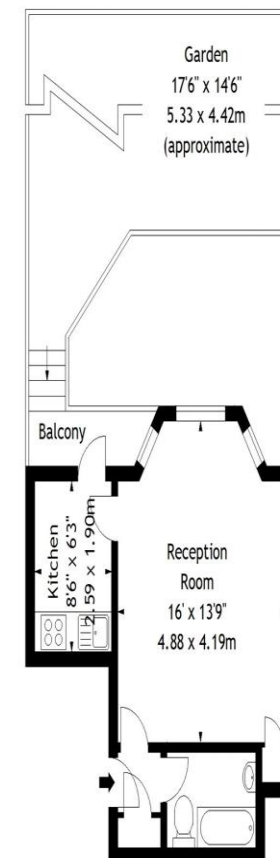
References per Tenant / Guarantor: £48 (VAT included).

Inventory check (approx. £95 - £250 plus VAT dependent on size of the property)

Price £295 per week - Furnished



Coleherne Road, SW10
Approx. Gross Internal Area
324 Sq Ft - 30.10 Sq M



Ground Floor

Measured in accordance with RICS guidelines. Every attempt is made to ensure accuracy, however all measurements are approximate. This floor plan is for illustrative purposes only and is not to scale.

© Datagraphy Ltd 2015

Photographs * Floorplans * Virtual Tours
Tel: 0845 643 4401 www.datagraphy.com