



Childs Mews
Earls Court, SW5

CHESTERTONS





The property has wood floors in the reception room and offers fantastic space spread over 1,300 square feet. The house comprises of a master bedroom with en-suite bathroom and a dressing room, a second double bedroom and bathroom.

- 2 bedrooms, 2 bathrooms
- Gated mews house
- Over 1,300 square feet
- Private balcony and garage
- Pet friendly

£3,900 pcm

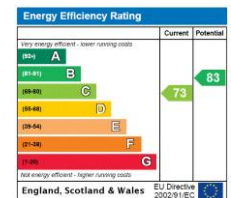
Additional tenant charges apply (fees apply to non-AST tenancies only)

Tenancy Agreement Fee: £300

References per Tenant/Guarantor: £60

Inventory check (approx. £100 – £250 inc. VAT)

chestertons.co.uk/property-to-rent/applicable-fees



Minimum Term: 12 months
Deposit Required: £4,500.00
Local Authority: Kensington and Chelsea
Council Tax Band: G
EPC Rating: C
Unfurnished

Chestertons South Kensington Lettings

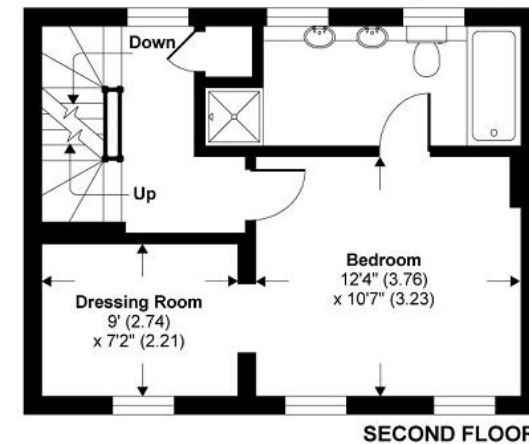
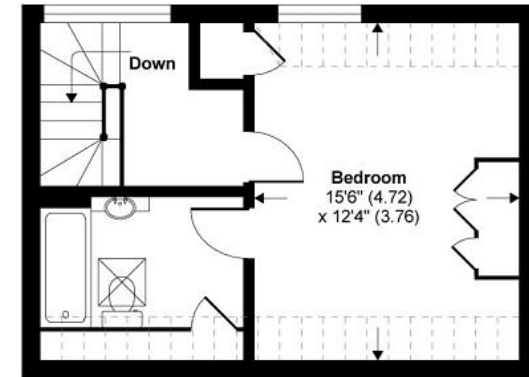
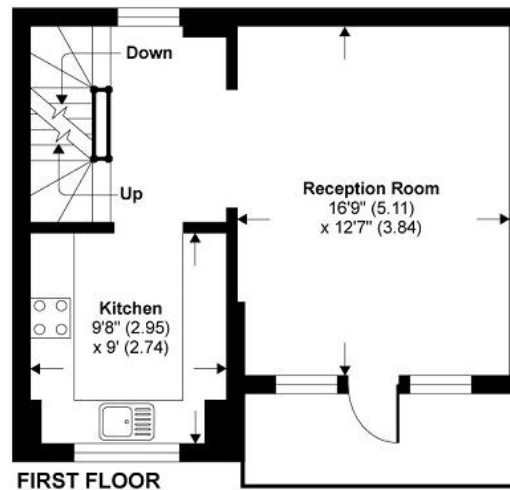
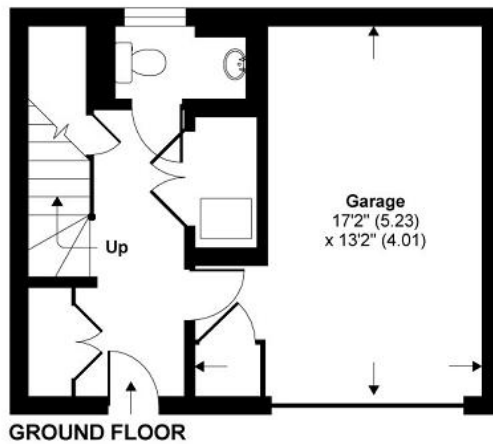
44-48 Old Brompton Road
 South Kensington
 London
 SW7 3DY

southkensingtonlettingsusers@chestertons.co.uk
 02075891244

Child's Mews, London, SW5



Denotes restricted head height



TOTAL GROSS INTERNAL FLOOR AREA 1380 SQ FT 128 SQ METRES (EXCLUDES RESTRICTED HEAD HEIGHT)

MAIN HOUSE INTERNAL FLOOR AREA 1193 SQ FT 110 SQ METRES

GARAGE INTERNAL FLOOR AREA 187 SQ FT 17 SQ METRES

Whilst every attempt has been made to ensure the accuracy of the floor plan contained here, measurements of doors, windows and rooms are approximate and no responsibility is taken for any error, omission or misstatement. These plans are for representation purposes only as defined by RICS Code of Measuring Practice and should be used as such by any prospective purchaser. Specifically no guarantee is given on the total square footage of the property if quoted on this plan. Any figure given is for initial guidance only and should not be relied on as a basis of valuation.

Copyright nichecom.co.uk 2013 Produced for Chesterton Humberts REF : 437053

Chesterton UK Services Limited trading as Chestertons for themselves and for the vendor of this property whose agents they are, give notice that (i) these particulars do not constitute any part of an offer or contract, (ii) all statements contained within these particulars are made without responsibility on the part of Chestertons or the vendor, (iii) whilst made in good faith, none of the statements contained within these particulars are to be relied upon as a statement or representation of fact, (iv) any intending purchasers must satisfy themselves by inspection or otherwise as to the correctness of each of the statements contained within these particulars, (v) the vendor does not make or give either Chestertons or any person in their employment any authority to make or give representation or warranty whatsoever in relation to this property. Wide angle lenses may be used. ©Copyright Chestertons | Chesterton Global Ltd | Registered Office 40 Connaught Street, Hyde Park, London W2 2AB Registered Company Number 05334580.



This paper is
100% recyclable