



Onslow Square
South Kensington, SW7

CHESTERTONS





A stunning two bedroom flat on the raised ground floor of a beautiful period conversion. The flat benefits from South facing views over Onslow Square together with it's own patio garden.

- A stunning apartment with South facing views over communal gardens
- Two bedrooms, two bathrooms, reception room, kitchen, patio
- Prime location in South Kensington
- In close proximity to tube station

£6,000 pcm

Additional tenant charges apply (fees apply to non-AST tenancies only)

Tenancy Agreement Fee: £300

References per Tenant/Guarantor: £60

Inventory check (approx. £100 – £250 inc. VAT)

chestertons.co.uk/property-to-rent/applicable-fees

Energy Efficiency Rating		Current	Potential
92-100	A		
81-91	B		
69-80	C		
55-68	D	54	56
39-54	E		
21-38	F		
1-20	G		

Not energy efficient - higher running costs

EU Directive 2002/91/EC

England, Scotland & Wales

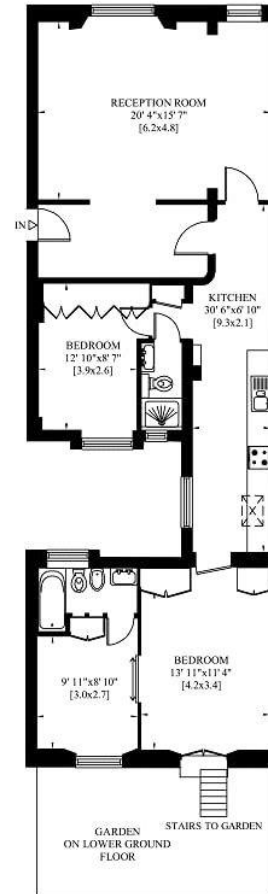
Minimum Term: months
Deposit Required: £6,923.08
Local Authority: Kensington and Chelsea
Council Tax Band: G
EPC Rating: C
Furnished, Part Furnished, Unfurnished

Chestertons South Kensington Lettings

44-48 Old Brompton Road
 South Kensington
 London
 SW7 3DY

southkensingtonlettingsusers@chestertons.co.uk
 02075891244

Gross Internal Area: 107 Sq. metres
1149 Sq. feet



RAISED GROUND FLOOR

Chesterton UK Services Limited trading as Chestertons for themselves and for the vendor of this property whose agents they are, give notice that (i) these particulars do not constitute any part of an offer or contract, (ii) all statements contained within these particulars are made without responsibility on the part of Chestertons or the vendor, (iii) whilst made in good faith, none of the statements contained within these particulars are to be relied upon as a statement or representation of fact, (iv) any intending purchasers must satisfy themselves by inspection or otherwise as to the correctness of each of the statements contained within these particulars, (v) the vendor does not make or give either Chestertons or any person in their employment any authority to make or give representation or warranty whatsoever in relation to this property. Wide angle lenses may be used. ©Copyright Chestertons | Chesterton Global Ltd | Registered Office 40 Connaught Street, Hyde Park, London W2 2AB Registered Company Number 05334580.



This paper is
100% recyclable