



Onslow Square
South Kensington, SW7

CHESTERTONS





An immaculately presented two bedroom, first floor apartment finished to the highest of standard in a desirable block in the heart of South Kensington.

- Fully refurbished two bedroom apartment
- First floor with balcony and access to communal gardens
- Parquet flooring and Air-conditioning throughout
- Finished to the highest of standard

£8,250 pcm

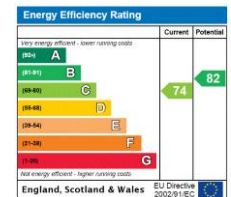
Additional tenant charges apply (fees apply to non-AST tenancies only)

Tenancy Agreement Fee: £300

References per Tenant/Guarantor: £60

Inventory check (approx. £100 – £250 inc. VAT)

chestertons.co.uk/property-to-rent/applicable-fees



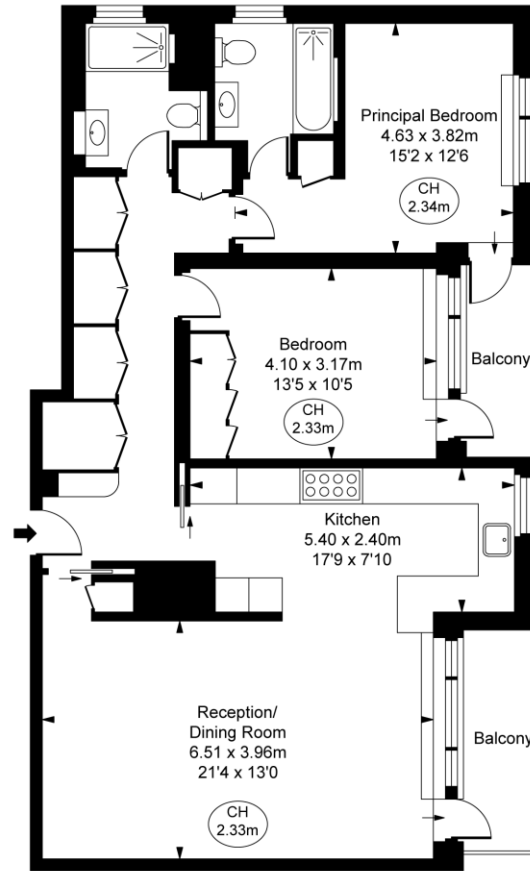
Minimum Term: 12 months
Local Authority: Royal Borough of Kensington & Chelsea
Council Tax Band: G
EPC Rating: C
Furnished, Part Furnished

Chestertons South Kensington Lettings

44-48 Old Brompton Road
 South Kensington
 London
 SW7 3DY

southkensington@chestertons.co.uk
 02075891244

Onslow Square, SW7
Approximate Gross Internal Area
96.03 sq m / 1,034 sq ft
(CH = Ceiling Heights)



First Floor

This plan is not to scale. It is for guidance and not for valuation purposes.
All measurements and areas are approximate only, and have been prepared in accordance with the current edition of the RICS Code of Measuring Practice.
© Fulham Performance

Chesterton Global Ltd trading as Chestertons for themselves and for the vendor of this property whose agents they are, give notice that (i) these particulars do not constitute any part of an offer or contract, (ii) all statements contained within these particulars are made without responsibility on the part of Chestertons or the vendor, (iii) whilst made in good faith, none of the statements contained within these particulars are to be relied upon as a statement or representation of fact, (iv) any intending purchasers must satisfy themselves by inspection or otherwise as to the correctness of each of the statements contained within these particulars, (v) the vendor does not make or give either Chestertons or any person in their employment any authority to make or give representation or warranty whatsoever in relation to this property. Wide angle lenses may be used. ©Copyright Chestertons | Chesterton Global Ltd | Registered Office 40 Connaught Street, Hyde Park, London W2 2AB Registered Company Number 05334580.



This paper is
100% recyclable