



Onslow Crescent
South Kensington, SW7

CHESTERTONS





Short Let - A stunning and spacious four bedroom lateral apartment with balcony situated on the seventh floor of this much sought after portered block on Onslow Crescent.

- Stunning lateral Penthouse finished to the highest of standard
- Four double bedrooms with ample storage
- Spacious double reception room with double glazing throughout
- 24 hour portered building in the centre of South Kensington

£18,000 pcm

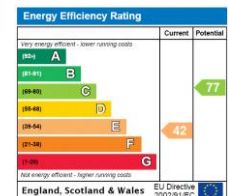
Additional tenant charges apply (fees apply to non-AST tenancies only)

Tenancy Agreement Fee: £300

References per Tenant/Guarantor: £60

Inventory check (approx. £100 – £250 inc. VAT)

chestertons.co.uk/property-to-rent/applicable-fees



Minimum Term: 3 months
Deposit Required: £24,923.08
Local Authority: Kensington and Chelsea
Council Tax Band: G
EPC Rating: E
Furnished

Chestertons South Kensington Lettings

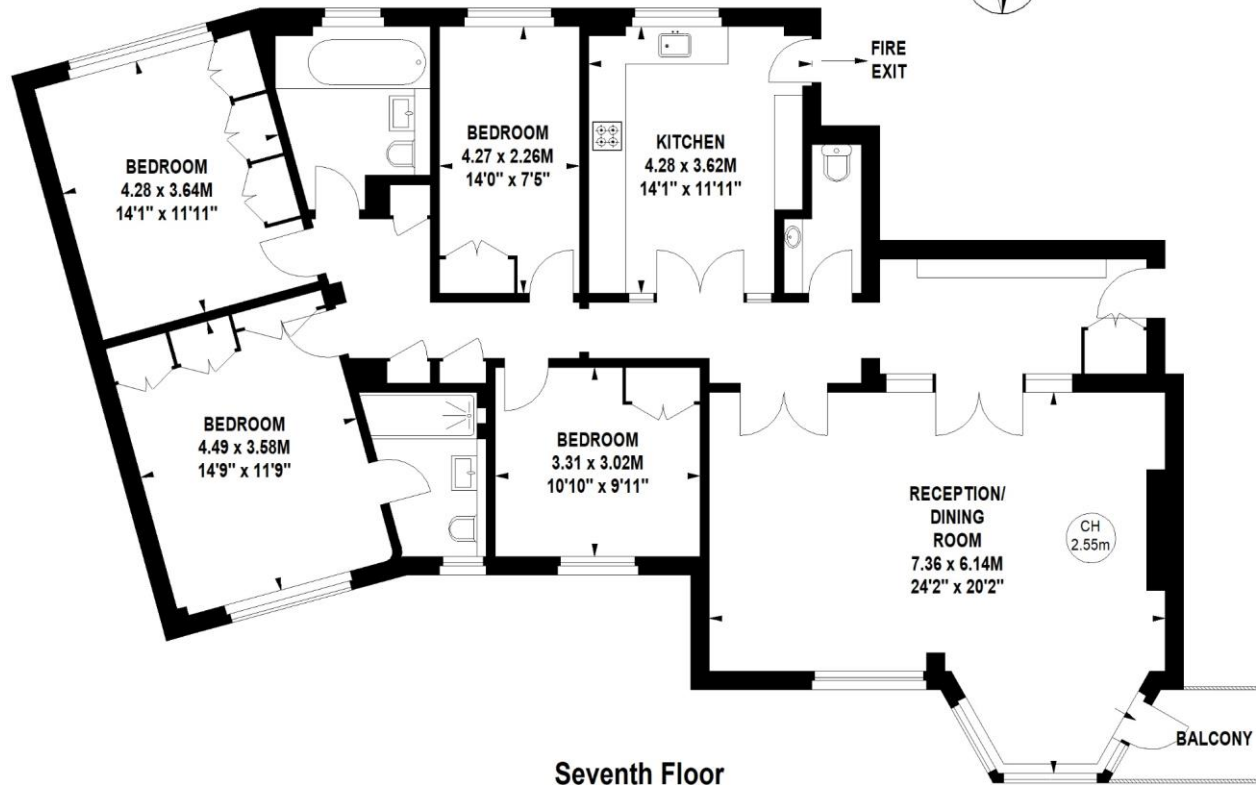
44-48 Old Brompton Road
 South Kensington
 London
 SW7 3DY

southkensingtonlettingsusers@chestertons.co.uk
 02075891244

Melton Court, Onslow Crescent, SW7

Approximate gross internal area
147.71 sq m / 1590 sq ft

Key :
CH - Ceiling Height



Seventh Floor

Not to scale, for guidance only and must not be relied upon as a statement of fact.
All measurements and areas are approximate only

Chesterton UK Services Limited trading as Chestertons for themselves and for the vendor of this property whose agents they are, give notice that (i) these particulars do not constitute any part of an offer or contract, (ii) all statements contained within these particulars are made without responsibility on the part of Chestertons or the vendor, (iii) whilst made in good faith, none of the statements contained within these particulars are to be relied upon as a statement or representation of fact, (iv) any intending purchasers must satisfy themselves by inspection or otherwise as to the correctness of each of the statements contained within these particulars, (v) the vendor does not make or give either Chestertons or any person in their employment any authority to make or give representation or warranty whatsoever in relation to this property. Wide angle lenses may be used. ©Copyright Chestertons | Chesterton Global Ltd | Registered Office 40 Connaught Street, Hyde Park, London W2 2AB Registered Company Number 05334580.



This paper is
100% recyclable