



Earls Court Square
Earls Court, SW5

CHESTERTONS





VIDEO AVAILABLE A stunning newly refurbished one bedroom apartment on the first floor of this beautiful period conversion building situated on the very desired Earls Court Square.

The property benefits from wooden floors throughout, semi open plan kitchen reception with fully integrated appliances, architecturally designed mezzanine bedroom with plenty of fitted wardrobe space and tiled shower suite.

This apartment has been renovated throughout with high end fixtures and fittings, over five meter ceiling heights, large west facing bay windows, very bright and airy.

ZERO DEPOSIT OPTION AVAILABLE

Earls Court Square is one of the most desirable garden squares in the area. Residents can obtain access to the greenspace of the garden square subject to application. Earls Court Square is moments from Earls Court tube and amenities as well as a short walk from South Kensington and Chelsea.

- Newly renovated one bedroom apartment on the first floor.
- High ceilings, wood floors, ample storage, mezzanine level.
- Access to communal garden square.
- Moments from Earls Court tube station.

£525 per week (£2,275 pcm)

Additional tenant charges apply (fees apply to non-AST tenancies only)

Tenancy Agreement Fee: £300

References per Tenant/Guarantor: £60

Inventory check (approx. £100 – £250 inc. VAT)

chestertons.com/property-to-rent/applicable-fees

Energy Efficiency Rating		
Energy efficient - lower running costs	Current	Potential
90-100 A		
81-89 B		
72-80 C		
63-71 D		
54-62 E		
45-53 F		
35-44 G		
Not energy efficient - higher running costs		
England, Scotland & Wales	EU Directive 2002/91/EC	

Tenure: To be advised

Furnished

Chestertons South Kensington Lettings

44-48 Old Brompton Road

South Kensington

London

SW7 3DY

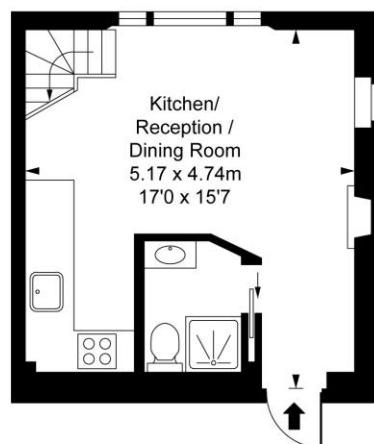
lettings.southkensington@chestertons.com

02075891244

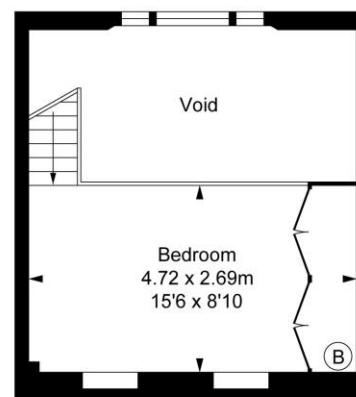
Earl's Court Square,
Earl's Court, SW5

Approximate Gross Internal Area
37.27 sq m / 401 sq ft
(Excluding Void)

(CH = Ceiling Heights)



First Floor
Approximate Gross Internal Area
23.73 sq m / 255 sq ft



Mezzanine
Approximate Gross Internal Area
13.54 sq m / 146 sq ft

This plan is not to scale. It is for guidance and not for valuation purposes.
All measurements and areas are approximate only, and have been prepared in accordance with the current edition of the RICS Code of Measuring Practice.
© Fulham Performance

Chesterton Global Ltd trading as Chestertons for themselves and for the vendor of this property whose agents they are, give notice that (i) these particulars do not constitute any part of an offer or contract, (ii) all statements contained within these particulars are made without responsibility on the part of Chestertons or the vendor, (iii) whilst made in good faith, none of the statements contained within these particulars are to be relied upon as a statement or representation of fact, (iv) any intending purchasers must satisfy themselves by inspection or otherwise as to the correctness of each of the statements contained within these particulars, (v) the vendor does not make or give either Chestertons or any person in their employment any authority to make or give representation or warranty whatsoever in relation to this property. Wide angle lenses may be used. ©Copyright Chestertons | Chesterton Global Ltd | Registered Office 40 Connaught Street, Hyde Park, London W2 2AB Registered Company Number 05334580.



This paper is
100% recyclable