



Onslow Crescent
South Kensington, SW7

CHESTERTONS





A stunning refurbished three-bedroom with en-suite bathroom apartment, This exquisite property boasts generous storage, sleek contemporary fixtures, and air conditioning throughout, With double glazing, the apartment offers a serene and peaceful atmosphere.

The layout features three spacious double bedrooms, and a double reception room offers a bright and airy space for relaxation or entertaining, with a large fully equipped modern kitchen.

Located within the prestigious Melton Court on Onslow Crescent, this highly sought-after residence includes 24-hour porter service, walking distance from the vibrant shops, restaurants, and South Kensington station.

- Fully refurbished three bedroom apartment
- Extremely bright double reception room
- Wooden floors throughout
- Air-conditioning, lift and 24 hour porter

£8,666.67 pcm

Additional tenant charges apply (fees apply to non-AST tenancies only)

Tenancy Agreement Fee: £300

References per Tenant/Guarantor: £60

Inventory check (approx. £100 – £250 inc. VAT)

chestertons.co.uk/property-to-rent/applicable-fees

Energy Efficiency Rating		Current	Potential
92-100	A		
81-91	B		
69-80	C		
55-68	D	66	81
49-54	E		
37-48	F		
1-36	G		

Not energy efficient - higher running costs

England, Scotland & Wales EU Directive 2002/91/EC

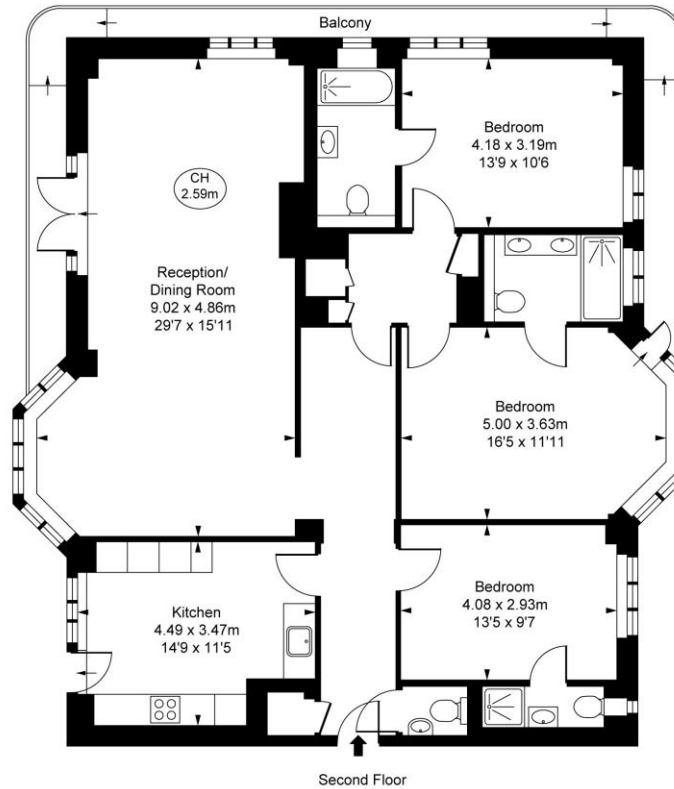
Minimum Term: 12 months
Deposit Required: £12,000.00
Local Authority: Royal Borough of Kensington & Chelsea
Council Tax Band: G
EPC Rating: D
Unfurnished

Chestertons South Kensington Lettings

44-48 Old Brompton Road
 South Kensington
 London
 SW7 3DY

southkensington@chestertons.co.uk
 02075891244

Melton Court,
Onslow Crescent, SW7
Approximate Gross Internal Area
132.55 sq m / 1,427 sq ft
(CH = Ceiling Heights)



This plan is not to scale. It is for guidance and not for valuation purposes.
All measurements and areas are approximate only, and have been prepared in accordance with the current edition of the RICS Code of Measuring Practice.
© Fulham Performance

Chesterton Global Ltd trading as Chestertons for themselves and for the vendor of this property whose agents they are, give notice that (i) these particulars do not constitute any part of an offer or contract, (ii) all statements contained within these particulars are made without responsibility on the part of Chestertons or the vendor, (iii) whilst made in good faith, none of the statements contained within these particulars are to be relied upon as a statement or representation of fact, (iv) any intending purchasers must satisfy themselves by inspection or otherwise as to the correctness of each of the statements contained within these particulars, (v) the vendor does not make or give either Chestertons or any person in their employment any authority to make or give representation or warranty whatsoever in relation to this property. Wide angle lenses may be used. ©Copyright Chestertons | Chesterton Global Ltd | Registered Office 40 Connaught Street, Hyde Park, London W2 2AB Registered Company Number 05334580.



This paper is
100% recyclable