



Kempsford Gardens
Earls Court, SW5

CHESTERTONS



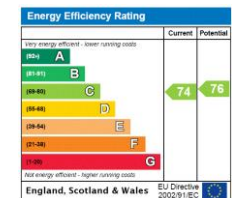


Presenting a large three bedroom duplex property located in the heart of Earls Court. The property has well proportioned rooms as well as a private split level garden located at the rear of the building.

- 3 bedrooms, 2 bathrooms and study
- Duplex apartment on raised ground and lower ground
- Over 1,100 square feet
- Patio and private terrace
- Moments from Earls Court tube station

£4,000 pcm

Additional tenant charges apply (fees apply to non-AST tenancies only)
 Tenancy Agreement Fee: £300
 References per Tenant/Guarantor: £60
 Inventory check (approx. £100 – £250 inc. VAT)
chestertons.co.uk/property-to-rent/applyable-fees



Minimum Term: 12 months
Deposit Required: £4,615.38
Local Authority: Royal Borough Of Kensington & Chelsea
Council Tax Band: G
EPC Rating: C
Part Furnished

Chestertons South Kensington Lettings

44-48 Old Brompton Road
 South Kensington
 London
 SW7 3DY

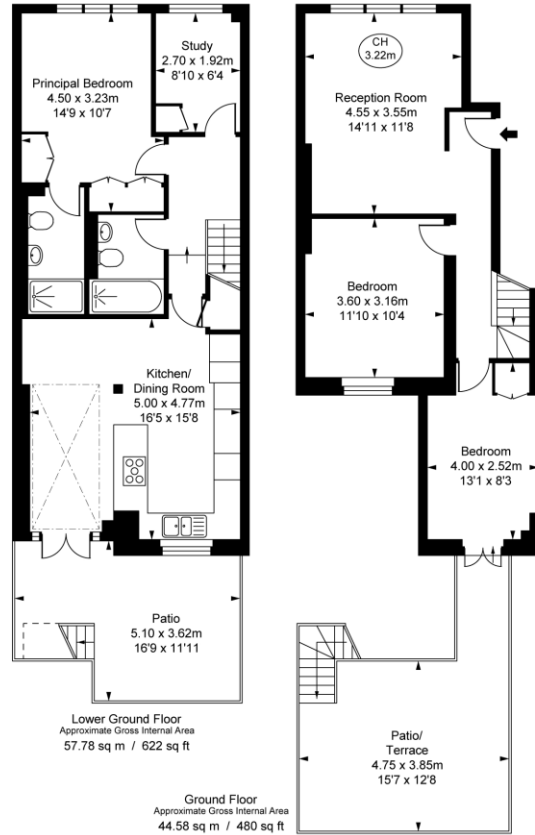
southkensington@chestertons.co.uk

02075891244

Kempsford Gardens, SW5

Approximate Gross Internal Area
102.35 sq m / 1,102 sq ft

(Including restricted height
under 1.5m (= = =))
(CH = Ceiling Heights)



Chesterton Global Ltd trading as Chestertons for themselves and for the vendor of this property whose agents they are, give notice that (i) these particulars do not constitute any part of an offer or contract, (ii) all statements contained within these particulars are made without responsibility on the part of Chestertons or the vendor, (iii) whilst made in good faith, none of the statements contained within these particulars are to be relied upon as a statement or representation of fact, (iv) any intending purchasers must satisfy themselves by inspection or otherwise as to the correctness of each of the statements contained within these particulars, (v) the vendor does not make or give either Chestertons or any person in their employment any authority to make or give representation or warranty whatsoever in relation to this property. Wide angle lenses may be used. ©Copyright Chestertons | Chesterton Global Ltd | Registered Office 40 Connaught Street, Hyde Park, London W2 2AB Registered Company Number 05334580.



This paper is
100% recyclable